

This article was downloaded by: [Carlos Pinto Gomes]

On: 07 August 2012, At: 05:28

Publisher: Taylor & Francis

Informa Ltd Registered in England and Wales Registered Number: 1072954 Registered office: Mortimer House, 37-41 Mortimer Street, London W1T 3JH, UK



## Acta Botanica Gallica

Publication details, including instructions for authors and subscription information:  
<http://www.tandfonline.com/loi/tabg20>

### Analysis of the *Cytisetea scopario-striati* scrubs in the south-west-centre of the Iberian Peninsula

Carlos Pinto-Gomes<sup>a</sup>, Ana Cano-Ortiz<sup>b</sup>, Ricardo Quinto-Canas<sup>a</sup>, Carlos Vila-Viçosa<sup>a</sup> & M<sup>a</sup> C. Martínez Lombardo<sup>c</sup>

<sup>a</sup> Dpto. de Paisagem, Ambiente e Ordenamento/Instituto de Ciências Agrárias e Ambientais Mediterrânicas (ICAAM), Universidade de Évora, Rua Romão Ramalho, no. 59, P-7000-671 Évora, Portugal

<sup>b</sup> Dpto. Sostenibilidad, Interra Ingeniería y Recursos SL, Avda del Mar Mediterráneo, Paracuellos del Jarama, Madrid, Spain

<sup>c</sup> Dpto. Animal, Plant Biology and Ecology, Section of Botany, University of Jaén, Jaén, Spain

Version of record first published: 02 Aug 2012

To cite this article: Carlos Pinto-Gomes, Ana Cano-Ortiz, Ricardo Quinto-Canas, Carlos Vila-Viçosa & M<sup>a</sup> C. Martínez Lombardo (2012): Analysis of the *Cytisetea scopario-striati* scrubs in the south-west-centre of the Iberian Peninsula, *Acta Botanica Gallica*, 159:2, 251-266

To link to this article: <http://dx.doi.org/10.1080/12538078.2012.696937>

PLEASE SCROLL DOWN FOR ARTICLE

Full terms and conditions of use: <http://www.tandfonline.com/page/terms-and-conditions>

This article may be used for research, teaching, and private study purposes. Any substantial or systematic reproduction, redistribution, reselling, loan, sub-licensing, systematic supply, or distribution in any form to anyone is expressly forbidden.

The publisher does not give any warranty express or implied or make any representation that the contents will be complete or accurate or up to date. The accuracy of any instructions, formulae, and drug doses should be independently verified with primary sources. The publisher shall not be liable for any loss, actions, claims, proceedings, demand, or costs or damages whatsoever or howsoever caused arising directly or indirectly in connection with or arising out of the use of this material.



Société botanique de France

## Analysis of the *Cytisetea scopario-striati* scrubs in the south-west-centre of the Iberian Peninsula

### Étude des manteaux de la *Cytisetea scopario-striati* dans le sud-ouest-centre de la Péninsule Ibérique

Carlos Pinto-Gomes<sup>a\*</sup>, Ana Cano-Ortiz<sup>b</sup>, Ricardo Quinto-Canas<sup>a</sup>, Carlos Vila-Viçosa<sup>a</sup> and M<sup>a</sup> C. Martínez Lombardo<sup>c</sup>

<sup>a</sup>Dpto. de Paisagem, Ambiente e Ordenamento/Instituto de Ciências Agrárias e Ambientais Mediterrânicas (ICAAM), Universidade de Évora, Rua Romão Ramalho, no. 59, P-7000-671 Évora, Portugal; <sup>b</sup>Dpto. Sostenibilidad, Interra Ingeniería y Recursos SL, Avda del Mar Mediterráneo, Paracuellos del Jarama, Madrid, Spain; <sup>c</sup>Dpto. Animal, Plant Biology and Ecology, Section of Botany, University of Jaén, Jaén, Spain

**Abstract:** The statistical and phytosociological study of 255 relevés taken in the south-west of the Iberian Peninsula and made up of our own samples and previous publications reveals how close these relevés, previously ascribed to different syntaxa, really are. Our re-arrangement of the data leads us to propose for the territory the 15 associations already published and three new ones, namely: *Genisto floridae-Adenocarpum argyrophylli* ass. nova hoc loco, *Cytisetum bourgaei-eriacarpi* nova, *Lavandulo viridis-Cytisetum striati* ass. nova hoc loco. We also suggest a name correction, *Adenocarpum anisochili-Cytisetum scoparii* J.C. Costa et al. 2000 corr., and a status change, namely, *Ulici latebracteati-Cytisetum striati* (Costa et al. 2000) status novo.

**Keywords:** association; broomlands; *Cytisus*; Iberian south west; revision

**Résumé:** L'étude statistique et phytosociologique de 255 inventaires du sud-ouest de la Péninsule Ibérique, de nos propres échantillonnages et des publications antérieures, fait voir la proximité entre les inventaires, qui auparavant ont été inclus dans des syntaxons différents. Nous avons réorganisé les données et maintenant nous proposons pour le territoire 15 associations de celles qui ont été déjà publiées et en plus trois associations neuves: *Genisto floridae-Adenocarpum argyrophylli* nova, *Cytisetum bourgaei-eriacarpi* nova, *Lavandulo viridis-Cytisetum striati* nova. Nous rectifions le nom *Adenocarpum anisochili-Cytisetum scoparii* J.C. Costa et al. 2000 corr., et nous changeons le status de *Ulici latebracteati-Cytisetum striati* (Costa et al. 2000) status novo.

**Mots clés:** association; *Cytisus*; genêt; révision; sud-ouest ibérique

#### Introduction

The scrublands dominated by retamoids in the Iberian Peninsula have been widely dealt with by a number of authors. However, these scrubs are still poorly understood as a result of their anthropozoogenous character. All the aphilous formations of an Iberian-Atlantic, silicicolous character had originally been ascribed to the phytosociological class *Cytisetea scopario-striati* Rivas-Martínez 1975, which included only one order *Cytisetalia scopario-striati* Rivas-Martínez 1975 (Rivas-Martínez 1974). Later, this same author recognised two orders within the class *Cytisetea scopario-striati*: *Cytisetalia scopario-striati* and *Retametalia sphaerocarpace* Rivas Goday 1980. This latter was then considered as a heterogeneous and edaphically indifferent order for the semiarid and dry thermomediterranean and mesomediterranean belts. The order was pro-

posed by Rivas Goday (1980) to encompass brooms and *escobonales* in which he included two alliances: *Cytiso-Retamion* Rivas Goday 1980, for retamoid, silicicolous communities, and *Chronantho-Retamion* Rivas Goday 1980, for basophilous taxa. However, Rivas-Martínez (1981) suggested the alliance *Retamion sphaerocarpace* Rivas-Martínez 1981 for the semiarid and dry thermomediterranean and mesomediterranean territories, in which he included both silicicolous and basophilous associations. However, in Rivas-Martínez and Belmonte (1987) the *Retamion sphaerocarpace* alliance is depicted as silicicolous for the dry-subhumid, lower dry mesomediterranean and supramediterranean belts. In the face of this controversy, some authors (Gómez Mercado 1989; Arrojo Agudo 1994) have opted for supporting the order *Retametalia sphaerocarpace* Rivas Goday 1980, while Torres Cordero

\*Corresponding author. Email: cpgomes@uevora. pt

(1997) prefers to broaden the concepts of the *Cytisetalia scopario-striati* order and the *Retamion sphaerocarphae* alliance to encompass silicicolous and basophilous territories. Some authors prefer to include these retamoid communities in the order *Pistacio lentisci-Rhamnetalia alaterni* (Alcaraz et al. 1991; Sánchez Gómez and Alcaraz 1993; Rivas-Martínez et al. 2001). At the present time, Rivas-Martínez et al. (2002) recognize two orders: first, *Cytisetalia scopario-striati*, in which they include eight alliances encompassing the broom and *piornal* formations growing in the Iberian Atlantic and sub-Atlantic silicicolous territories ranging from the thermomediterranean to the supramediterranean belts with semiarid–hyperhumid ombrotypes; and second, the order *Cytiso villosi-Telinetalia monspessulanae* Rivas-Martínez, Galán and Cantó in Rivas-Martínez et al. (2002), which is ascribed to the silicicolous, Tirrenian, Maghrebi, Aljibic and Catalan-Valencian areas of the thermomediterranean and mesomediterranean belts. Consequently, at present there is no syntaxon with a rank higher than that of association which encompasses these basophilous retamoid scrubs.

All these retamoid formations are dominated by Leguminosae species. Particularly remarkable is the presence of the genera *Genista*, *Cytisus*, *Adenocarpus*, *Retama*, which provide these aphilous formations with a very special physiognomy. Finally, the floristic depiction of these syntaxa is a matter of contention among different authors. *Cytisus scoparius* subsp. *bourgaei* (Boiss.) Rivas Mart., Fern. Gonz. and Sánchez Mata has been synonymized with *Cytisus scoparius* subsp. *scoparius*, and *Cytisus striatus* subsp. *eriocarpus* (Boiss. and Reut.) Rivas Mart. has been synonymized with *Cytisus striatus* (Hill) Rothm. by Talavera (1999). Our paper aims at shedding light on these issues.

## Material and methods

### Study area

The south-west of the Iberian Peninsula is a large territory with different kinds of geological materials. In this type of territory, acid soils tend to be dominant over basic soils. This edaphic profile, together with the effects of bioclimatology and cattle raising may well account for the variety of plant communities native to the territory.

The biogeographical units where the associations under study occur correspond to the following provinces: 1) Coastal Lusitan-Andalusian Province, with its subprovinces Gaditan-Algarvian Subprovince and Sadensean-Dividing Portuguese Subprovince; and 2) Mediterranean West Iberian Province, which also encompasses two subprovinces, the Lusitan-Extremadurean Subprovince and Carpetan-Leonese Subprovince (Rivas-Martínez, 2007). Of the Carpetan-Leonese territories we deal here only with some associations found in the Guadarramean, Bejaran-Gredensean and Salmanticensean Sectors (Figure 1).

A large part of the south and south-west of the Iberian Peninsula is dominated by siliceous materials that gener-



Figure 1. Location of the study area.

Figure 1. Emplacement de la surface étudiée.

ate oligotrophic soils with acid pH. Occasionally, isolated red outcrops (*terra rosa*) formed by decarbonization can also be found. These outcrops occur in areas with high average temperature and a subhumid–humid ombrotype with ombrothermic index  $> 3.6$ . In this case, the pH values are  $\geq 7$ . By contrast, in the territories of Aljibe and in the Lusitan-Extremadurean Subprovince, the dominance of Palaeozoic slates, quartzites, granites and sandstones usually gives rise to soils with  $\text{pH} < 7$ , although it is also possible to find Cretaceous calcareous islands in the Lusitan-Extremadurean Subprovinces of the south, centre and west of the Iberian Peninsula with  $\text{pH} > 7$ .

### Study of flora and vegetation

Our study of the flora relies on the following reference sources: Talavera (1999) in *Flora Ibérica* vol. VII (I); Domínguez (1987) in *Flora Vascular de Andalucía Occidental* vol. II; Talavera (2002) in *Checklist of vascular plants of N Morocco* with identification keys vol. I; Rivas-Martínez (1974); Rivas-Martínez, Fernández-González and Sánchez-Mata (1986); Tutin *et al.* (1968) in *Flora Europea* vol. II; Coutinho (1939); Maire (1961); Quezel and Santa (1962); Willkomm and Lange (1880). To study the *Cytisus* genus we have used samples taken in Aracena (Huelva), Eastern Sierra Morena (Jaén and Ciudad Real), Sierra de San Vicente (Toledo) and Castelo-Branco (Portugal) (see Appendix). For the syntaxonomical scheme we have followed Rivas-Martínez *et al.* (2001, 2002). As for our phytosociological study, we sampled different territories in the centre and south of the Iberian Peninsula, both in Spain and Portugal, and applied the phytosociological method of the sigmatist school of Zürich-Montpellier (Braun-Blanquet 1979). Previously, we had carried out an edaphological, bioclimatic and biogeographical analysis. The study of scrubland formations involved the taking of phytosociological relevés and the recording not only of species occurrence and abundance–dominance index ( $r$ , +, 1, 2, 3, 4, 5), but also of other parameters such as altitude, orientation, slope, number of species, average height of dominant species, etc. Laboratory samples were analysed

and with the climate data of the weather stations we generated the bioclimatic indexes, the ombrothermic index  $I_o$ , the continentality index  $C_i$ , the compensated thermicity index  $I_{tc}$ , (Rivas-Martínez 1996a) and the ratio  $I_{osc3}/I_{osc2}$  (Cano et al. 2004, 2006). Our dynamic study follows Rivas-Martínez (2005).

For statistical data processing of the samples we first generated a data matrix. As floristic variables we took characteristic and companion species syntaxonomically ranked at association level or higher. To avoid statistical distortions, companion plants occurring in one or less than one relevé were removed (Pielou 1969). The original data matrix was made up of 343 rows (floristic variables) and 255 columns (relevés). For correct statistical processing, the indexes of abundance-dominance are transformed through the van der Maarel conversion scale. To separate floristic affinities between groups, all data were processed by means of the TWISPANN software programme. To confirm the grouping obtained in this manner, we applied a classification analysis (cluster, Euclidean distance, Ward method) and a Detrended Correspondence Analysis (DECORANA).

## Results and discussion

### *Bioclimatic analysis*

For the most part, the territory extends across thermo-, meso- and supramediterranean belts. However, in the peaks of the Cordillera Central bioclimatic conditions are those of an oromediterranean and cryromediterranean environment. The analysis of the  $I_c$ ,  $I_o$  and  $I_t/I_{tc}$  values confirms that most of the territory exhibits a Mediterranean, pluviseasonal, oceanic bioclimate, with a pluviseasonal-continental profile in the north-eastern territories of Andalusia and the centre of the Iberian Peninsula.

### *Floristic study*

Our floristic analysis reveals significant morphological differences between *Cytisus striatus* (Hill) Roth. and *Cytisus striatus* subsp. *eriocarpus* (Boiss. & Reut.) Rivas Mart. The most prominent features in which these two taxa (belonging to the same species) differ is the form, size and length of the fruit and the number of seeds. Other differential features are also the thickness of stem ridges and the width of stem grooves. The presence of one or two seeds in *Cytisus striatus* subsp. *eriocarpus* is the result of deficiencies in the quality and quantity of the available pollen (Talavera 1999). For us this is a fundamentally differential feature between *Cytisus striatus* subsp. *striatus* and *Cytisus striatus* subsp. *eriocarpus*. Consequently, we agree with Rivas-Martínez (1974), Coutinho (1939) and Willkomm and Lange (1880) in that the species *Cytisus striatus* (Hill) Rothm. presents two subspecies, namely: subsp. *striatus*, with a more oceanic character, and subsp. *eriocarpus* (Boiss. & Reut.) Rivas Mart., peculiar to submediterranean and more continental environments.

*Cytisus striatus* (Hill) Roth.

A robust plant, usually of a dark green colour. Old stems usually with 8–10 prominent and clearly greenish ridges and intercostal grooves with a small, wrinkled, lagoon-shaped ritidome. Puberulent young stems with seven or eight very straight ridges and intercostal grooves with isolated simple hairs. Wide ridges in young stems and even wider grooves with tiny, antrorse spikelets. Ridges emerge from knots less prominent than the rest. Oblong fruit (length of the fruit over three times the width of the fruit) with a lax indumentum, always with more than two seeds.

*Cytisus striatus* subsp. *eriocarpus* (Boiss. & Reut.) Rivas Mart.

Not very robust plant of a light green colour. Old stems with a maximum of 10 poorly visible ridges, sometimes masked by the ritidome and giving the appearance of an intercostal crossing. Ribs or ridges present a greenish or brown colour with a hyaline look. Non-puberulent, hairless old stems. Poorly visible grooves in young stems, because they are concealed by prominent ribs or ridges, which are broader than intercostal grooves. Small-size, trapezoidal fruit with a thick indumentum and long hairs attached to the fruit. Length of the fruit less than three times the width of the fruit, always with one or two seeds (only one seed is the result of abortion of the second one).

A similar case is that of *Cytisus scoparius* (L.) Link and *Cytisus scoparius* subsp. *bourgaei* (Boiss.) Rivas Mart., Fern. Gonz. and Sánchez Mata. Coutinho (1939) records *bourgaei* (Boiss.) Nym as a variant of *Cytisus scoparius* (L.) Link, which shows blunt ridges. Rivas-Martínez, Fernández-González and Sánchez-Mata (1986) proposed the new combination *Cytisus scoparius* subsp. *bourgaei* (Boiss.) Rivas-Mart., Fern. Gonz. and Sánchez Mata. Later, Talavera (1999) synonymized *Cytisus scoparius* subsp. *bourgaei* with *Cytisus scoparius* subsp. *scoparius*. However, for this last subspecies Talavera confirms that the plant presents conspicuously sharp ridges delimiting broad, flat or slightly concave grooves. In the face of these differences it seems sensible to accept the existence of the two subspecies. Similarly, *Cytisus scoparius* (L.) Link var. *oxyphyllus* (Boiss.) Briq. is synonymized by Talavera (1999) with *Cytisus scoparius* (L.) Link subsp. *scoparius*. However, we prefer to follow Coutinho (1939) in this respect. Coutinho supports the variant *oxyphyllus* (Boiss.) Briq., because the plant presents large sheaths, pointed folioles in all cases and is found in the Monchiquean Sector, Sintra and the Alto Minho.

### *Statistical analysis*

The initial TWISPANN analysis groups sampled plants by their floristic affinities. One group of relevés corresponds to the coldest and northernmost areas (M) and the other to the southern areas with an oceanic character (N). The binomial tree of affinities reveals frequent relationships within the groups M and N (Figure 2).

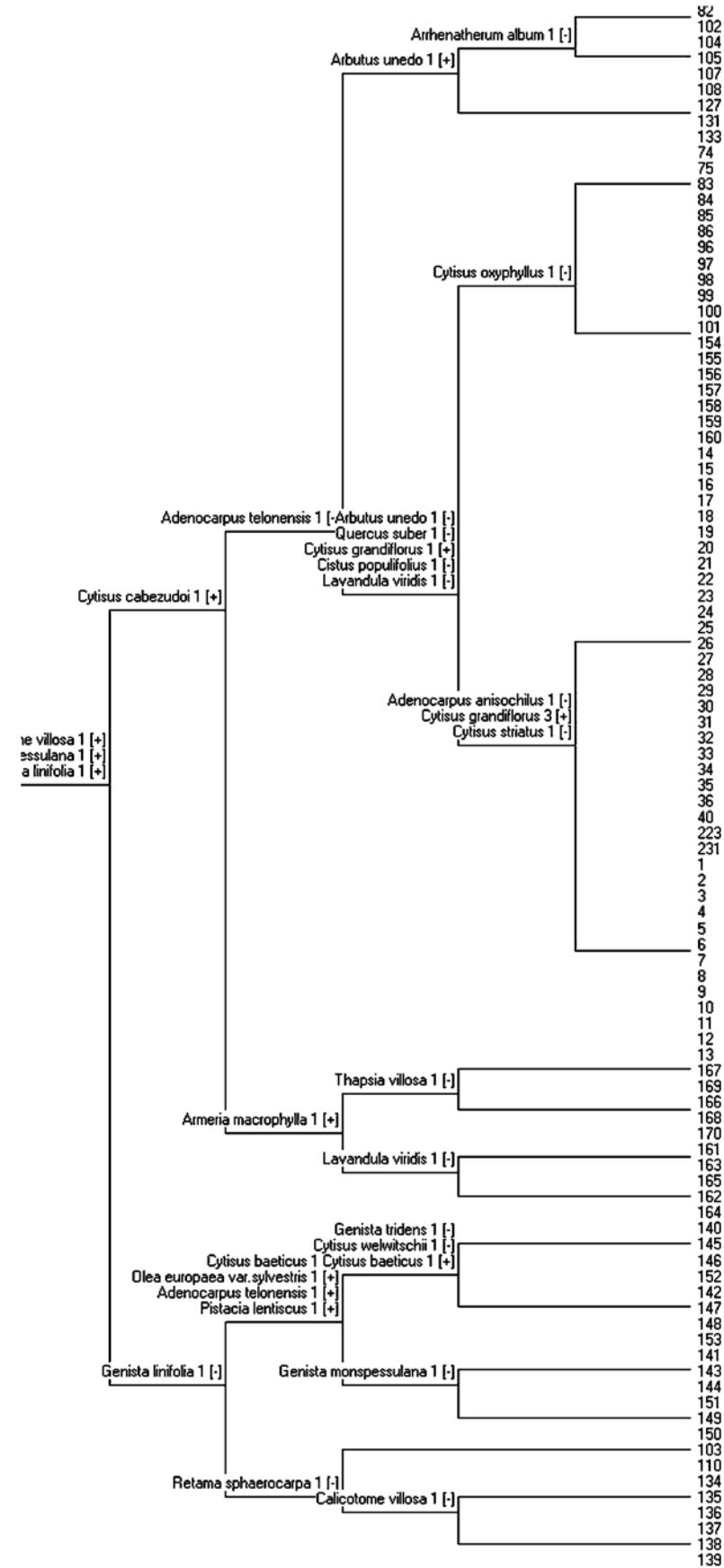


Figure 2. Initial data arrangement with grouping through TWISPANN.

Figure 2. Organisation initiale des données avec la séparation en groupes en utilisant TWISPANN.

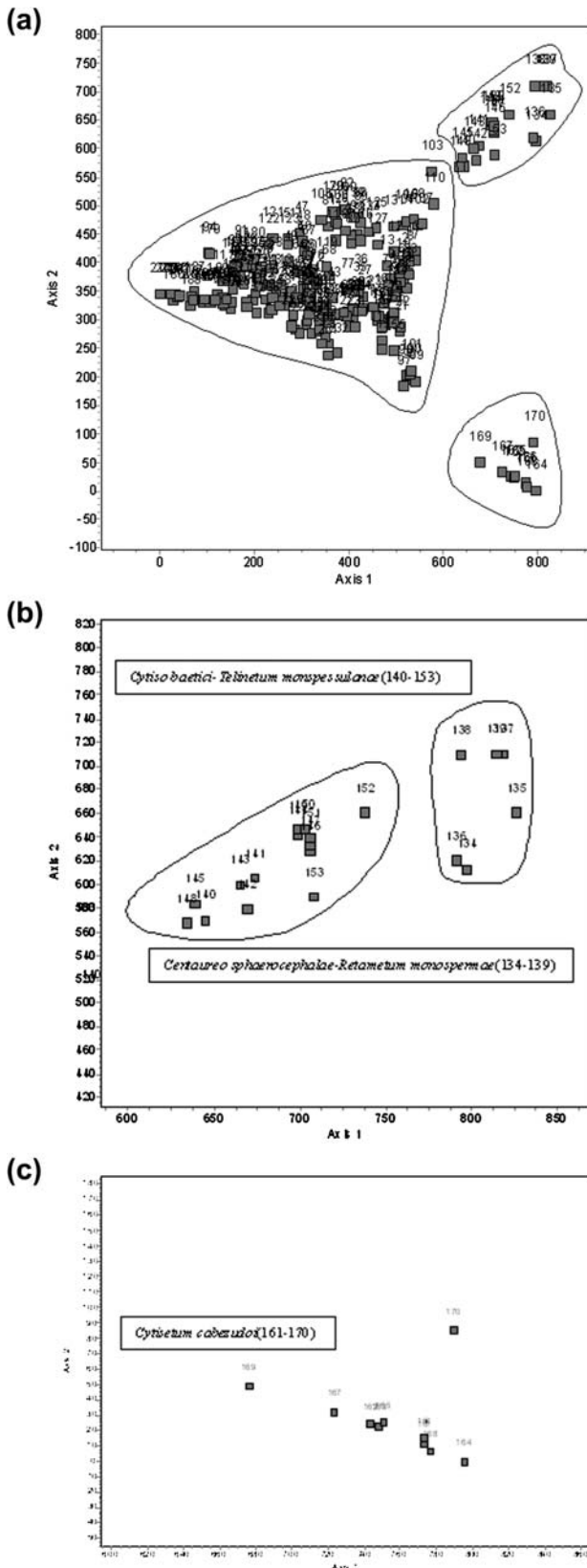


Figure 3. DECORANA Ordination Analysis.  
Figure 3. Analyse de l'ordre DECORANA.

In our cluster analysis the groups of relevés of the different associations appear relatively close to each other because of the proximity between syntaxa. This fact allows

us to reshuffle the information. The same pattern emerges when the DECORANA ordination plot is made (Figure 3): the vast majority of the relevés group together and only three small groups remain apart from that block. These small groups correspond to the associations: *Centaureo sphaerocephalae-Retametum monospermae*; *Cytiso baetici-Telinetum monspessulanae*; *Cytisetum cabezudo*.

The cluster analysis (Figure 4) produces three groups of associations (groups A, B and C). Group A is made up of 48 relevés distributed in two subgroups. Subgroup Sa<sub>1</sub> (1–158) is made up of 20 relevés. Relevés 1–13 belong to *Erico scopariae-Cytisetum grandiflorae*, as suggested by Costa et al. (2000) for the Dividing Portuguese Sector. Our own samples, 154–158, belong to the new association proposed under the name of *Cytisetum bourgaei-eriocarpi* for the Araceno-Pacense Subsector. Sa<sub>2</sub> is made up of 29 relevés and presents two blocks of relevés. Relevés 14–36 include samples dominated by the species *Adenocarpus anisochilus* Boiss., endemic of Portugal, and *Cytisus striatus* (Hill) Rothm. These two species belong to the associations *Adenocarpus anisochili-Cytisetum striati*, as suggested for Monchique, and to *Genisto falcatae-Adenocarpetum anisochili*, likewise suggested by the same authors, Costa et al. (2000), for the mountain range of S. Mamede (Portugal). Sa<sub>2</sub> also includes a community of *Cytisus striatus* (Hill) Rothm. (96–100), *Lavandulo viridis-Cytisetum striati*, which is proposed here as a new association for the Iberian South-West.

Group B encompasses most of the associations under study. It is made up of 204 samples. Subgroup Sb<sub>1</sub> includes samples 40–117. Samples 40–44 were ascribed by Amor, Ladero and Valle (1993) to *Cytisetum scopario-eriocarpi* subas. *genistetosum floridae* for areas of Cáceres (Spain). Sb<sub>1</sub> also encompasses samples 181–183, included in the association *Genisto floridae-Adenocarpetum hispanici* Rivas-Martínez 1974, given by Rivas-Martínez and Cantó (1987) for the sierra of Guadarrama. Samples 54 and 55 belong to *Genisto floridae-Cytisetum scopariae* subas. *festucetosum elegantis*. Samples 65–237 are a small group of samples that has *Cytisus multiflorus* (L'Hér) Sweet and were included in *Cytiso scoparii-Retametum sphaerocarphae* subas. *cytisetosum multiflori* (65–69), *Lavandulo sampaioanae-Cytisetum multiflori* (243–137); *Genisto floridae-Cytisetum scopariae* (194–201); *Genisto floridae-Cytisetum scopariae* subas. *genistetosum falcatae* (111–113); *Adenocarpetum argrophylli* subas. *genistetosum cinerascens* (115–117).

Subgroup Sb<sub>2</sub> is made up of samples 58–245. These are distributed in three associations: *Cytiso scoparii-Retametum sphaerocarphae* (samples 58–61), *Lavandulo sampaioanae-Cytisetum multiflori* (samples 218–235) and *Cytiso multiflori-Retametum sphaerocarphae* (samples 238–245).

Subgroup Sb<sub>3</sub> is more complex than the previous two and is made up of a variety of blocks of relevés. The first block, i.e. samples 46–110, belongs to the following syntaxa: from 46 to 72, to *Cytiso multiflori-*

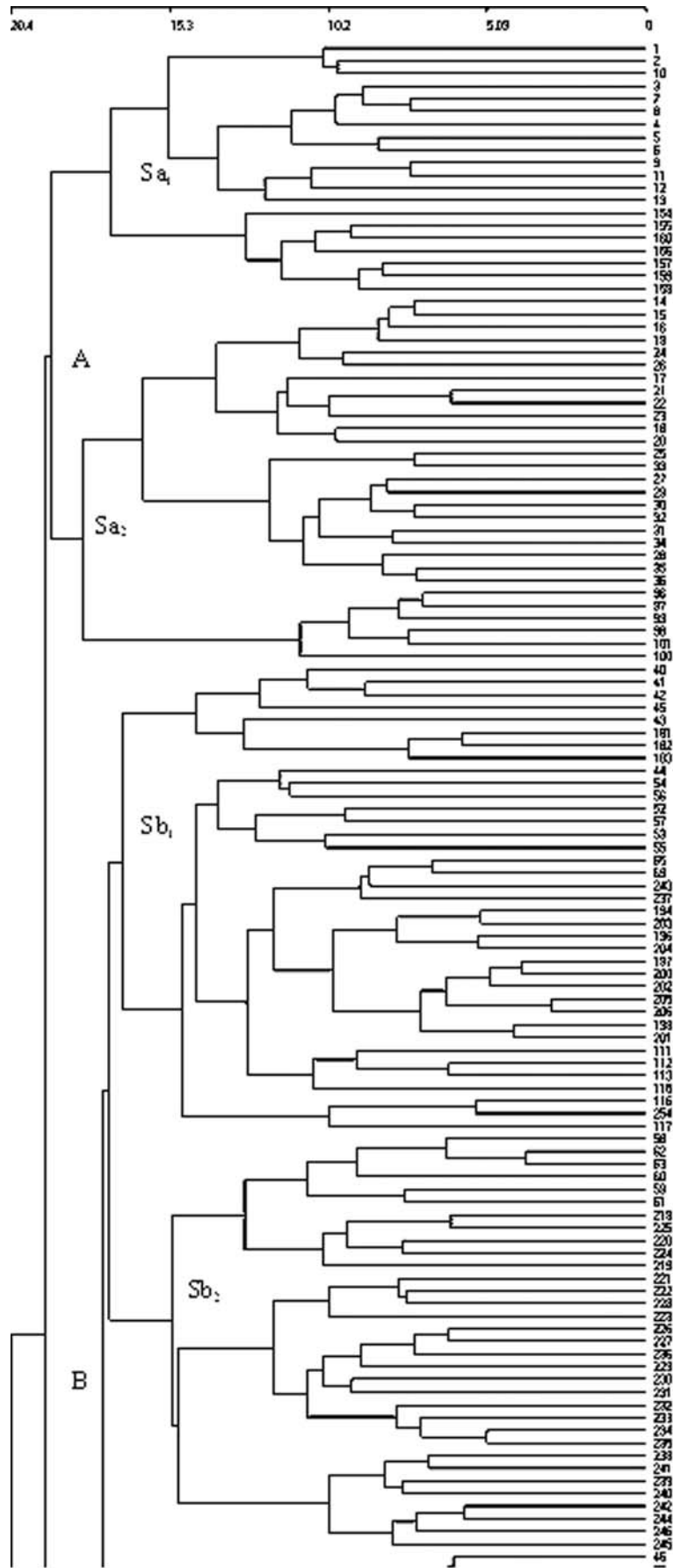


Figure 4. Classification analysis (cluster, Euclidean distance, Ward method).  
 Figure 4. Analyse de la classification (cluster, distance euclidienne, méthode de Ward).

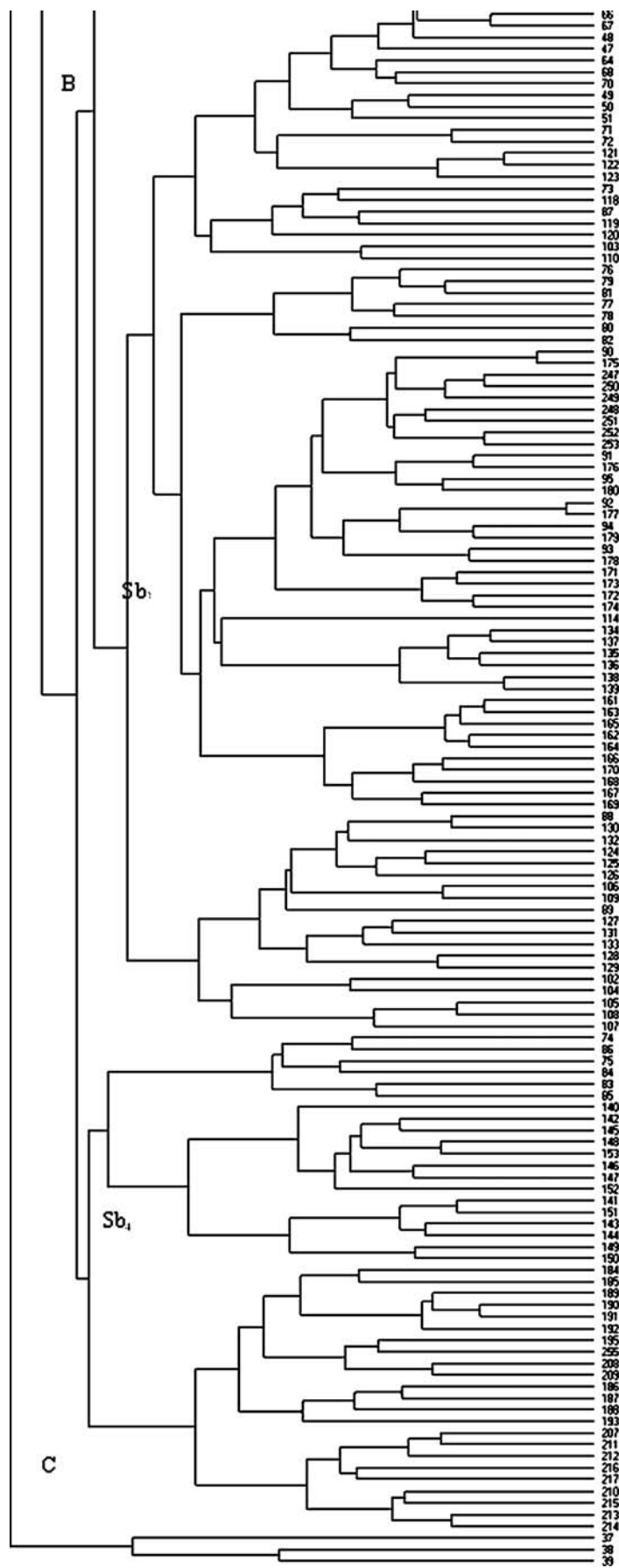


Figure 4. Continued.



*Retametum sphaerocarphae* and *Cytiso scoparii-Retametum sphaerocarphae* subas. *cytisetosum multiflori*. All these relevés share *Cytisus multiflorus* (L'Hér.) Sweet and belong to the same association *Cytiso multiflori-Retametum*. Samples 121–123, given by Cantó (2004) for the north of Toledo and included in *Retamo sphaerocarphae-Cytisetum bourgaei* var., with *Cytisus scoparius*, belong to this cluster block. Samples 73–110 are ascribed to the association *Retamo sphaerocarphae-Cytisetum bourgaei*. Particularly noteworthy is type relevé no. 73, described by Capelo (1996). Samples 76–82 all belong to *Genistetum polyanthi*.

Sb<sub>3</sub> also includes other subgroups that correspond to the associations *Adenocarpum argyrophylli* and *Genisto floridae-Adenocarpum argyrophylli* (samples 90–174). Relevé 114 was named by Cantó (2004) as *Genisto floridae-Cytisetum scopariae* subas. *genistetosum falcatae*. This relevé remains apart from the rest in that it only presents *Genista falcata* and not *Genista florida*, *Cytisus scoparius*.

The group of *Centaureo sphaerocephalae-Retametum monospermae*, as suggested by Galán (1993) for Cádiz, (samples 134–139) is also clearly defined. Finally, samples 161–169 are included in the association named by Costa et al. (2003) as *Cytisetum cabezudo*. The second group within Sb<sub>3</sub> is made up of samples 89–107. These samples have been included in the associations *Adenocarpum telonensis-Cytisetum bourgaei* and *Retamo sphaerocarphae-Cytisetum bourgaei*.

Subgroup Sb<sub>4</sub> (samples 74–214) encompasses two blocks of associations. Samples 74–85 correspond to the community of *Cytisus scoparius* (L.) Link var. *oxyphyllus* (Boiss.) Briq. Meanwhile, samples 140–159 all belong to the Aljibic association *Cytiso baetici-Telinetum monspessulanae*. Subgroup Sb<sub>4</sub> also encompasses a package of samples (184–214) where associations usually linked to supramediterranean environments are included; *Cytiso oromediterranei-Genistetum cinerascens*, described for Guadarramean and Bejaran-Gredensean territories, and *Genisto floridae-Cytisetum scopariae* (Rivas-Martínez and Cantó 1987), for the lower supramediterranean, Guadarramean Sector. Sample 255 belongs to the association *Adenocarpum argyrophylli* subas. *genistetosum cinerascens* (Rivas-Martínez et al. 2002) because of the presence of *Genista cinerascens* Lange. Finally, samples 207–214, which correspond to the association *Pteridio aquilini-Cytisetum oromediterranei*, are separated at some distance from the rest.

Group C is made up of three samples, 37–39, published by Rivas Goday (1964) under the name *Cytiso multiflori-Sarothamnetum eriocarpi* (Figure 4).

### Phytosociological study

Our phytosociological study of the centre and south-west of the Iberian Peninsula (Spain and Portugal) reveals a vast diversity of phytocoenoses. All of them occur in thermomediterranean to supramediterranean belts, under dry to humid rainfall conditions and on acid to neutral

substrates. All of these factors, together with the traditional use of the territory through history, have given rise to the emergence of different plant associations. With a high percentage of Leguminosae, it is not surprising that farmers have protected these communities: they induce an increase in nitrogen soil content and, consequently, improve the quality of the pasture.

The association *Erico scopariae-Cytisetum grandiflorae* J.C. Costa, Lousa, Ladero and Capelo in J.C. Costa, Capelo, Lousa, Antumes, Aguiar, Izco and Ladero 2000 (1–13) has been described in the territories of the Coastal Lusitan-Andalusian Province and, more precisely, in the Dividing Portuguese Sector to embrace the formations dominated by *Cytisus grandiflorus*, *Cytisus striatus*, *Ulex europaeus* subsp. *latebracteatus* and *Erica scoparia*. This community, growing on deep chromic luvisol soils and representing a dynamic stage of *Arisaro-Quercetum broteroi* Br.-Bl., P. Silva and Rozeira 1956 corr. Rivas-Martínez 1975, occurs in toposequence with the kermes oak grove of *Melico arrectae-Quercetum cocciferae* Br.-Bl., P. Silva and Rozeira 1956 and the *Arbutus unedo* L. communities of *Bupleuro fruticosae-Arbutetum unedonis* Capelo, J.C. Costa and Rivas-Martínez in J.C. Costa, Capelo, Espírito-Santo and Lousã 2002. Although the community has been described for the Dividing Portuguese Sector, it is also located in the Arrabidensean District of the Ribatagan-Sadensean Sector and, consequently, we extend its distribution area. *Erico scopariae-Cytisetum grandiflorae* remains included in the cluster subgroup Sa<sub>1</sub>, together with the new association which we propose under the name of *Cytisetum bourgaei-eriocarpi*. Our study of the Araceno-Pacense Subsector (Marianic-Monchiquensean Sector) reveals the presence of a community dominated by *Cytisus striatus* subsp. *eriocarpus*, together with other species, such as *Cytisus bourgaei*, *Genista falcata*, *Genista triacanthos*, *Pterospartum tridentatum*, *Ulex eriocladus* and, in the warmest areas, of *Lavandula viridis*, which marks the transition towards the association *Lavandulo viridis-Cytisetum striati*. This is a formation made up of retamoid species and differs from the communities of *Cytisus grandiflorus*, *Cytisus multiflorus*, *Adenocarpus anisochilus*, *Ulex europaeus* subsp. *latebracteatus* in the presence of *Cytisus bourgaei*. The community grows in environments of the Iberian South-West with a subhumid-humid ombrotype and a mesomediterranean thermotype, and represents either a dynamic stage of cork oak groves on deep soils of a granitic origin, or mesótrofos cork oak groves on limestones, or Pyrenean oak and gall-oak groves, that is, groves belonging to *Poterio agrimonoidis-Quercetum suberis*, *Arbuto-Quercetum pyrenaicae* and *Pistacio terebinthi-Quercetum broteroi*. Hence, we propose *Cytisetum bourgaei-eriocarpi* ass. nova hoc loco (Table 1 rel. 1–7 *typus* rel. 5), which corresponds to cluster samples 1–13. This new association is included in the alliance *Ulici europaei-Cytisium striati*.

In the cluster group Sa<sub>2</sub> there are two clear-cut subgroups of samples belonging to the association *Adeno-*

Table 1. *As. Cytisetum bourgaei-eriocarpi* nova. (*Ulici europaei-Cytision striati*, *Cytisetalia scopario-striati*, *Cytisetea scopario-striati*).Tableau 1. *As. Cytisetum bourgaei-eriocarpi* nova. (*Ulici europaei-Cytision striati*, *Cytisetalia scopario-striati*, *Cytisetea scopario-striati*).

| No. of orders                                    | 1   | 2   | 3   | 4   | 5   | 6   | 7   | P   |
|--|-----|-----|-----|-----|-----|-----|-----|-----|
| Altitude (m)                                     | 650 | 650 | 630 | 700 | 700 | 700 | 650 | R   |
| Surface l = 10 m <sup>2</sup>                    | 20  | 40  | 40  | 40  | 40  | 20  | 20  | E   |
| Cover rate (%)                                   | 80  | 50  | 100 | 60  | 85  | 70  | 90  | S   |
| Slope (%)  | 10  | —   | 5   | 6   | 5   | 15  | 20  | E   |
| Orientation                                      | —   | —   | SW  | NE  | NE  | W   | NE  | N   |
| No. of species                                   | 23  | 8   | 15  | 24  | 24  | 18  | 16  | C   |
|  |     |     |     |     |     |     |     | E   |
| <b>Characteristic of as. and higher units</b>    |     |     |     |     |     |     |     |     |
| <i>Cytisus striatus</i> subsp. <i>eriocarpus</i> | 4   | 2   | 5   | 4   | 4   | 3   | 4   | V   |
| <i>Genista falcata</i>                           | 1   | .   | 2   | 2   | 1   | 1   | 2   | V   |
| <i>Cytisus bourgaei</i>                          | .   | .   | .   | +   | 1   | 1   | +   | III |
| <i>Pteridium aquilinum</i>                       | .   | .   | .   | 1   | 1   | 1   | +   | III |
| <i>Lavandula viridis</i>                         | +   | .   | .   | .   | .   | .   | .   | III |
| <b>Companions</b>                                |     |     |     |     |     |     |     |     |
| <i>Genista triacanthos</i>                       | .   | 2   | 3   | 2   | 2   | 1   | 1   | V   |
| <i>Pterospartum tridentatum</i>                  | +   | .   | .   | 2   | 2   | 2   | .   | IV  |
| <i>Rubus ulmifolius</i>                          | 1   | .   | +   | +   | .   | 1   | +   | IV  |
| <i>Cistus populifolius</i>                       | +   | 1   | 1   | 1   | 1   | 1   | .   | III |
| <i>Brachypodium sylvaticum</i>                   | +   | .   | .   | .   | +   | 1   | .   | III |
| <i>Rubia peregrina</i>                           | 1   | .   | .   | .   | +   | 1   | +   | III |
| <i>Daphne gnidium</i>                            | +   | .   | .   | +   | +   | +   | .   | III |
| <i>Sanguisorba hybrida</i>                       | +   | .   | +   | .   | +   | 1   | +   | III |
| <i>Lonicera implexa</i>                          | +   | .   | +   | +   | .   | +   | .   | III |
| <i>Lavandula luisieri</i>                        | +   | 1   | .   | +   | +   | +   | +   | III |
| <i>Cistus salvifolius</i>                        | .   | +   | 1   | +   | +   | .   | 1   | III |
| <i>Helichrysum stoechas</i>                      | .   | +   | .   | +   | .   | +   | +   | III |
| <i>Cistus crispus</i>                            | .   | .   | 1   | +   | +   | +   | .   | III |
| <i>Pteridium aquilinum</i>                       | .   | .   | .   | 1   | 1   | 1   | +   | III |
| <i>Digitalis purpurea</i>                        | .   | .   | +   | +   | +   | .   | .   | II  |
| <i>Origanum virens</i>                           | +   | .   | .   | 1   | .   | 1   | .   | II  |
| <i>Teucrium haenseleri</i>                       | +   | .   | .   | .   | .   | .   | +   | II  |
| <i>Quercus pyrenaica</i>                         | +   | .   | .   | .   | .   | +   | .   | II  |
| <i>Arbutus unedo</i>                             | .   | .   | 1   | +   | 1   | .   | .   | II  |
| <i>Viburnum tinus</i>                            | .   | .   | 1   | +   | 1   | .   | .   | II  |
| <i>Quercus rotundifolia</i>                      | .   | .   | +   | +   | .   | .   | .   | II  |
| <i>Quercus broteroi</i>                          | .   | .   | +   | .   | +   | .   | .   | II  |
| <i>Quercus suber</i>                             | .   | .   | .   | +   | +   | .   | +   | II  |
| <i>Quercus lusitanica</i>                        | .   | .   | .   | .   | +   | .   | .   | I   |
| <i>Phlomis purpurea</i>                          | 1   | .   | .   | .   | .   | .   | .   | I   |
| <i>Epipactis helleborine</i>                     | +   | .   | .   | .   | .   | .   | .   | I   |
| <i>Euphorbia amygdaloides</i>                    | +   | .   | .   | .   | .   | .   | .   | I   |
| <i>Cistus ladanifer</i>                          | .   | +   | .   | .   | .   | .   | .   | I   |
| <i>Ulex eriocladius</i>                          | .   | 1   | .   | .   | .   | .   | .   | I   |
| <i>Erica umbellata</i>                           | .   | .   | .   | +   | .   | .   | .   | I   |
| <i>Tuberaria lignosa</i>                         | .   | .   | .   | +   | .   | .   | .   | I   |
| <i>Leucanthemum sylvaticum</i>                   | .   | .   | .   | .   | +   | .   | .   | I   |
| <i>Halimium viscosum</i>                         | .   | .   | .   | .   | +   | .   | .   | I   |
| <i>Cistus monspeliensis</i>                      | .   | .   | .   | .   | .   | .   | 1   | I   |
| <i>Tamus communis</i>                            | .   | .   | .   | +   | .   | .   | .   | I   |
| <i>Teucrium fruticans</i>                        | 1   | .   | .   | .   | +   | .   | .   | I   |
| <i>Phillyrea angustifolia</i>                    | +   | .   | .   | .   | .   | .   | .   | I   |
| <i>Asparagus acutifolius</i>                     | +   | .   | .   | .   | .   | .   | .   | I   |
| <i>Anemone palmata</i>                           | +   | .   | .   | .   | .   | .   | .   | I   |
| <i>Asparagus aphyllus</i>                        | +   | .   | .   | .   | .   | .   | .   | I   |
| <i>Coronilla glauca</i>                          | .   | .   | 1   | .   | .   | .   | .   | I   |
| <i>Thymus mastichina</i>                         | .   | .   | .   | .   | .   | .   | +   | I   |
| <i>Rosmarinus officinalis</i>                    | .   | .   | .   | .   | .   | .   | +   | I   |

Sites. Emplacements: 1. Castaño del Robledo-Fuenteheridos km 3, 2. La Nava (Huelva) N-435, 3. La Nava (Huelva) N-435 hm 129, 4. Castaño del Robledo, 5. Near Castaño del Robledo, 6. Fuenteheridos-Aracena, 7.- Corteconcepción.

*carpo anisochili-Cytisetum striati* J.C. Costa, J. Capelo and M. Lousa in Costa, Capelo, Lousa, Antunes, Aguiar, Izco and Ladero 2000, described for the Sierra de Monchique, and *Genisto falcatae-Adenocarpum anisochili* Castro, Antunes, Capelo, J.C. Costa and Lousa in Costa, Capelo, Lousa, Antunes, Aguiar, Izco and Ladero 2000, described for San Mamede. Castroviejo et al. (1999) only record the species *Adenocarpus anisochillus* Boiss. in the Iberian South-West (Sierra de Monchique). However, some authors support the presence of this taxon in southern Portugal. Our own samples taken at the site of Alferce (Monchique), where the type association for *Adenocarpus anisochili-Cytisetum striati* was first recorded, revealed that *Cytisus striatus* (Hill) Roth. is not present. However, *Cytisus scoparius* (L.) Link var. *oxyphyllus* (Boiss.) Briq. occurs very frequently. Not surprisingly, our own samples produce one cluster group (samples 74–85). To avoid further confusion with this taxon, we suggest correcting the name of the association to *Adenocarpus anisochili-Cytisetum scoparii* J.C. Costa et al. 2000 corr. hoc loco (Table 2 rel. 1–6), which occurs in the Monchiquensean Sector.

With regard to the subassociation *ulicetosum latebracteati*, suggested for Sintra by Costa et al. (2000), we propose changing its status and promoting it to the rank of the association *Ulici latebracteati-Cytisetum striati* (Costa et al. 2000) *status novo*, with the Sintranean Superdistrict as its distribution area. As *typus* for the association we maintain the *typus* of the subassociation provided by Costa et al. (2000, table 4 rel. 6). In the samples of Sa<sub>2</sub> cluster, relevés 96–100 remain separated from the rest. They constitute the new association *Lavandula viridis-Cytisetum striati ass. nova hoc loco* (Table 3 rel. 1–6, *typus* rel. 5). The association is characterized by *Lavandula viridis* L'Hér and *Cytisus striatus*, which occur in the thermomediterranean belt under subhumid–humid conditions in the Iberian South-West. Typically located in the Alentejiano-Monchiquensean Subsector, the association can also extend into the thermomediterranean areas of the Araceno-Pacense Subsector and represents the rim of the forest of cork oaks of *Lavandula viridis-Quercetum suberis* (Quinto-Canas et al. 2010).

The association *Genisto falcatae-Adenocarpum anisochilli* Castro, Antunes, Capelo, J.C. Costa and Lousa in Costa, Capelo, Lousa, Antunes, Aguiar, Izco and Ladero 2000, described by its authors for the most continentalized territories of San Mamede, is very close to this group of samples. Subgroup Sb<sub>1</sub> comprises several associations and subassociations. The subgroup presents a small number of relevés (40–44) that were previously included in *Cytisetum scopario-eriocarpi* Belmonte ex Amor, Ladero and C.J. Valle 1993 subas. *genistetosum floridae* Amor, Ladero and C.J. Valle 1993. These relevés group together with relevés 181–183, which belong to *Genisto floridae-Adenocarpum hispanici* Rivas-Martínez 1974 due to the presence of *Genista florida* L. and the absence of *Adenocarpus hispanicus* (Lam.) DC. The presence of *Cytisus multiflorus* (L'Hér.) Sweet. sup-

ports the thesis of Rivas-Martínez et al. (2001), in which the association *Cytisetum scopario-eriocarpi* Belmonte ex Amor, Ladero and C.J. Valle 1993 is synonymized with *Cytisus multiflori-Sarothamnetum eriocarpi* Rivas Goday 1964.

Except for the samples that form a small group with *Cytisus multiflorus* (L'Hér.) Sweet and have been included in *Cytisus scoparii-Retametum sphaerocarpace* subas. *cytisetosum multiflori*, most of the relevés of the following package of this subgroup Sb<sub>1</sub> present *Genista florida* L. and *Cytisus scoparius* (L.) Link (I44–I146). No floristic differences can be found between these relevés and their location in the cluster attests to a thermophilous variant of *Genista floridae-Cytisetum scoparii*. Sample 254 corresponds to *Adenocarpum argyrophylli* Rivas-Martínez, Cantó, Sánchez-Mata and Belmonte in Rivas-Martínez et al. (2002) subas. *genistetosum cinerascens* Rivas-Martínez, Cantó, Sánchez-Mata and Belmonte in Rivas-Martínez et al. (2002).

The relevés ascribed to the following associations appear clearly defined in Sb<sub>2</sub> (samples 58–245): *Cytisus scoparii-Retametum sphaerocarpace* Rivas-Martínez ex Fuente 1986. The association is peculiar to the most eastern part of the Toledano-Taganean Sector. Meanwhile, *Cytisus multiflori-Retametum sphaerocarpace* Rivas-Martínez ex Navarro, M. A. Sánchez, M.A. González, Gallego, Elena and C. Valle 1987 represents the *escobonar* of the mesomediterranean, dry–subhumid, most western part of the Toledano-Taganean Sector, as compared to *Lavandula sampaioanae-Cytisetum multiflori* Br.-Bl., P. Silva and Rozeira 1965, with a mesomediterranean and supra-mediterranean, lower subhumid–humid character (Navarro et al. 1987). These two associations present few floristic differences, but their ecological and dynamic profiles are different.

Subgroup Sb<sub>3</sub> is one of the most complex. It comprises a series of packages of relevés representing a number of associations described by different authors for the centre and west of the Iberian Peninsula. The group presents the following associations: *Cytisus multiflori-Retametum sphaerocarpace* (western Toledano-Taganean Sector); *Retametum sphaerocarpace-Cytisetum bourgaei* (Marianic-Monchiquensean Sector); and *Genistetum polyanthi* (Marianic-Monchiquensean Sector). Within this same package of relevés, the samples taken by Cantó (2004) in the Sierra de San Vicente and the lower reaches of the Alberche River were included as a variant of *Cytisus scoparius* (L.) Link in *Retametum sphaerocarpace-Cytisetum bourgaei* on account of the presence of this taxon and the absence of *Cytisus scoparius* subsp. *bourgaei* (Boiss.) Rivas Mart., Fern. Gonz. and Sánchez Mata. The difficulty in distinguishing these subspecies and the presence of the subsp. *bourgaei* far from its native habitat hint at a possible confusion between subspecies. For this reason, we think it better to ascribe the relevés provided by Cantó (2004, table 13) to the association *Cytisus scoparii-Retametum sphaerocarpace* Rivas-Martínez ex V. Fuente 1986.

Table 2. *As. Adenocarpus anisochili-Cytisetum scoparii* J.C. Costa et al. 2000 corr. hoc loco. (*Ulici europaei-Cytisium striati*, *Cytisetalia scopario-striati*, *Cytisetea scopario-striati*).  
 Tableau 2. *As. Adenocarpus anisochili-Cytisetum scoparii* J.C. Costa et al. 2000 corr. hoc loco. (*Ulici europaei-Cytisium striati*, *Cytisetalia scopario-striati*, *Cytisetea scopario-striati*).

|   |     |     |     |     |     |     |     |
|---|-----|-----|-----|-----|-----|-----|-----|
| No. of orders   | 1   | 2   | 3   | 4   | 5   | 6   | P   |
| Altitude (m)  | 310 | 300 | 435 | 410 | 415 | 175 | R   |
| Surface 1 = 10 m <sup>2</sup>                           | 80  | 150 | 100 | 200 | 250 | 200 | E   |
| Cover rate (%)  | 90  | 100 | 95  | 60  | 95  | 95  | S   |
| Slope (%)   | 30  | 60  | 10  | 10  | 15  | 10  | E   |
| Orientation   | N   | NW  | N   | SW  | NW  | NE  | N   |
| No. of species  | 14  | 20  | 21  | 21  | 32  | 28  | C   |
|   |     |     |     |     |     |     | E   |
| <b>Characteristic of as. and higher units</b>           |     |     |     |     |     |     |     |
| <i>Cytisus scoparius</i> var. <i>oxyphyllus</i>         | 3   | 4   | 4   | 4   | 4   | 4   | V   |
| <i>Pteridium aquilinum</i>                              | 2   | 1   | 2   | 2   | 3   | +   | V   |
| <i>Erica arborea</i>                                    | +   | 2   | –   | 2   | +   | 1   | V   |
| <i>Lavandula viridis</i>                                | +   | .   | +   | .   | +   | 1   | IV  |
| <i>Adenocarpus anisochilus</i>                          | 4   | –   | –   | –   | –   | 2   | II  |
| <b>Companions</b>                                       |     |     |     |     |     |     |     |
| <i>Arbutus unedo</i>                                    | +   | +   | –   | +   | +   | 1   | V   |
| <i>Lonicera periclymenum</i> subsp. <i>hispanica</i>    | –   | +   | +   | +   | +   | +   | V   |
| <i>Rubus ulmifolius</i>                                 | –   | 1   | +   | 1   | 1   | +   | V   |
| <i>Quercus suber</i>                                    | +   | +   | +   | –   | –   | +   | IV  |
| <i>Lavandula viridis</i>                                | +   | –   | +   | –   | +   | 1   | IV  |
| <i>Calamintha baetica</i>                               | –   | +   | +   | –   | 1   | +   | IV  |
| <i>Deschampsia stricta</i>                              | +   | –   | –   | +   | (+) | +   | IV  |
| <i>Dactylis lusitanica</i>                              | +   | –   | +   | –   | +   | +   | IV  |
| <i>Digitalis purpurea</i>                               | +   | –   | –   | +   | (+) | +   | IV  |
| <i>Euphorbia paniculata</i> subsp. <i>monchiquensis</i> | –   | –   | +   | +   | 1   | –   | III |
| <i>Viburnum tinus</i>                                   | –   | +   | –   | +   | +   | –   | III |
| <i>Genista triacanthos</i>                              | –   | +   | –   | –   | +   | +   | III |
| <i>Cistus salvifolius</i>                               | +   | –   | –   | +   | +   | –   | III |
| <i>Brachypodium sylvaticum</i>                          | –   | –   | +   | 1   | +   | –   | III |
| <i>Euphorbia characias</i>                              | +   | –   | +   | –   | +   | –   | III |
| <i>Scrophularia scorodonia</i>                          | +   | –   | +   | –   | 1   | –   | III |
| <i>Asphodelus aestivus</i>                              | –   | –   | +   | +   | +   | –   | III |
| <i>Thapsia minor</i>                                    | –   | –   | +   | +   | +   | –   | III |
| <i>Daucus carota</i>                                    | –   | –   | +   | +   | +   | –   | III |
| <i>Quercus canariensis</i>                              | –   | –   | 1   | –   | +   | –   | II  |
| <i>Castanea sativa</i>                                  | –   | –   | +   | –   | +   | –   | II  |
| <i>Crataegus monogyna</i>                               | –   | –   | –   | +   | –   | +   | II  |
| <i>Cistus populifolius</i>                              | +   | –   | –   | –   | –   | +   | II  |
| <i>Ruscus aculeatus</i>                                 | –   | +   | –   | –   | –   | +   | II  |
| <i>Teucrium scorodonia</i> subsp. <i>baeticum</i>       | –   | –   | –   | –   | +   | +   | II  |
| <i>Epipactis lusitanica</i>                             | –   | –   | +   | –   | +   | –   | II  |
| <i>Tamus communis</i>                                   | –   | –   | +   | –   | +   | –   | II  |
| <i>Luzula forsteri</i> subsp. <i>baeticum</i>           | –   | –   | +   | –   | –   | +   | II  |
| <i>Asplenium onopteris</i>                              | –   | –   | +   | –   | –   | +   | II  |
| <i>Clinopodium vulgare</i> subsp. <i>arundanum</i>      | –   | –   | –   | +   | –   | +   | II  |
| <i>Arrhenatherum album</i>                              | –   | –   | –   | +   | (+) | –   | II  |
| <i>Holcus lanatus</i>                                   | –   | –   | –   | +   | +   | –   | II  |

In addition. En plus: *Rhododendron ponticum* subsp. *baeticum* 1 (2); *Frangula alnus* + (2); *Salix salviifolia* subsp. *australis* + (2); *Campanula primulifolia* + (2); *Hedera maderensis* subsp. *iberica* + (2); *Smilax aspera* var. *altissima* + (2); *Phillyrea latifolia* subsp. *media* + (2); *Dittrichia viscosa* subsp. *revoluta* + (2); *Limodorum abortivum* + (2); *Ulex minor* + (4); *Erica scoparia* + (4); *Rubia peregrina* subsp. *peregrina* + (5); *Agrostis castellana* (5); *Bryonia cretica* subsp. *dioica* + (5); *Bituminaria bituminosa* + (5); *Pyrus bourgaeana* + (6); *Quercus coccifera* + (6); *Rubia peregrina* subsp. *longifolia* + (6); *Sanguisorba hybrida* + (6); *Paeonia broteroi* + (6); *Campanula rapunculoides* + (6); *Anthyllis gerardii* + (6).

Sites. Emplacements: (geographical coordinate system Datum WGS84): 1. Cortes (lat 37°17'20.89"N, long 8°36'20.99"W); 2. Covão da Eira (Near Marmeleite; lat 37°19'48.93"N, long 8°40'16.61"W); 3. Rebolos (Near Monchique; lat 37°18'40.19"N, long 8°33'03.81"W); 4. Ressementeira (lat 37°18'18.78"N, long 8°39'36.06"W); 5. Besteiros (Near Monchique; lat 37°19'29.52"N, long 8°31'46.49"W); 6. Foz do Vale (Near Alferce; lat 37°20'28.26"N, long 8°29'26.34"W).

The presence of *Cytisus scoparius* (L.) Link, *Cytisus multiflorus* (L'Hér.) Sweet, *Retama sphaerocarpa* (L.) Boiss. in most of the samples of the subgroup leads us to propose its inclusion in *Cytisus scoparii-Retametum sphaerocarphae* Rivas-Martínez ex V. Fuente 1986 var. con *Cytisus multiflorus* (L'Hér.) Sweet. This association,

peculiar to the centre and east of the mesomediterranean and dry Toledan-Taganean Sector, is in contact with *Cytisus multiflorus-Retametum sphaerocarphae*, peculiar to the most western areas of the Toledan-Taganean Sector.

In our statistical analysis, the association *Adenocarpum argyrophylli* Rivas-Martínez et al. 2002,

Table 3. *As. Lavandulo viridis-Cytisetum striati* nova. (*Ulici europaei-Cytision striati*, *Cytisetalia scopario-striati*, *Cytiseteta scopario-striati*).Tableau 3. *As. Lavandulo viridis-Cytisetum striati* nova. (*Ulici europaei-Cytision striati*, *Cytisetalia scopario-striati*, *Cytiseteta scopario-striati*).

| No. of orders                                      | 1   | 2   | 3   | 4   | 5   | 6   | P   |
|--|-----|-----|-----|-----|-----|-----|-----|
| Altitude (m)                                       | 430 | 525 | 410 | 485 | 500 | 440 | R   |
| Surface 1 = 10 m <sup>2</sup>                      | 200 | 300 | 300 | 300 | 300 | 200 | E   |
| Cover rate (%)                                     | 90  | 90  | 90  | 95  | 100 | 90  | S   |
| Slope (%)  | 15  | 15  | 5   | 25  | 25  | 15  | E   |
| Orientation  | W   | E   | SE  | NW  | NW  | NW  | N   |
| No. of species                                     | 26  | 26  | 28  | 30  | 38  | 29  | C   |
|  |     |     |     |     |     |     | E   |
| <b>Characteristic of as. and higher units</b>      |     |     |     |     |     |     |     |
| <i>Cytisus striatus</i>                            | 4   | 5   | 4   | 4   | 5   | 4   | V   |
| <i>Lavandula viridis</i>                           | 2   | 2   | 2   | 3   | 2   | 3   | V   |
| <i>Erica arborea</i>                               | +   | –   | 1   | –   | 1   | –   | III |
| <i>Pteridium aquilinum</i>                         | –   | –   | –   | –   | 1   | +   | II  |
| <b>Companions</b>                                  |     |     |     |     |     |     |     |
| <i>Cistus populifolius</i>                         | 1   | 1   | +   | 1   | 1   | 1   | V   |
| <i>Lavandula x alportelensis</i>                   | +   | +   | 1   | +   | +   | +   | V   |
| <i>Quercus suber</i>                               | +   | +   | +   | +   | +   | +   | V   |
| <i>Pulicaria odora</i>                             | 1   | +   | 1   | 1   | 1   | 1   | V   |
| <i>Arbutus unedo</i>                               | +   | +   | +   | +   | 1   | –   | V   |
| <i>Dactylis hispanica</i> subsp. <i>lusitanica</i> | –   | +   | 1   | +   | +   | +   | V   |
| <i>Daphne gnidium</i>                              | +   | –   | +   | +   | +   | +   | V   |
| <i>Epipactis lusitanica</i>                        | +   | +   | –   | +   | +   | +   | V   |
| <i>Carlina racemosa</i>                            | +   | –   | +   | +   | +   | +   | V   |
| <i>Cistus ladanifer</i>                            | +   | +   | +   | +   | –   | +   | V   |
| <i>Genista triacanthos</i>                         | +   | –   | +   | –   | +   | 1   | IV  |
| <i>Ulex argenteus</i>                              | +   | –   | +   | –   | +   | +   | IV  |
| <i>Rubus ulmifolius</i>                            | +   | –   | +   | –   | +   | +   | IV  |
| <i>Genista hirsuta</i>                             | +   | +   | +   | –   | –   | +   | IV  |
| <i>Lavandula luisieri</i>                          | +   | 1   | +   | 1   | –   | –   | IV  |
| <i>Picris echioides</i>                            | +   | +   | –   | +   | +   | –   | IV  |
| <i>Cistus salviifolius</i>                         | –   | +   | +   | +   | –   | +   | IV  |
| <i>Centaurium erythraea</i>                        | +   | –   | –   | +   | +   | +   | IV  |
| <i>Rubia peregrina</i> subsp. <i>longifolia</i>    | +   | –   | –   | +   | 1   | –   | III |
| <i>Deschampsia stricta</i>                         | –   | –   | +   | –   | +   | +   | III |
| <i>Lonicera implexa</i>                            | –   | –   | –   | +   | +   | +   | III |
| <i>Tamus communis</i>                              | –   | –   | –   | +   | 1   | +   | III |
| <i>Helichrysum stoechas</i>                        | +   | +   | –   | –   | –   | +   | III |
| <i>Thapsia villosa</i>                             | +   | –   | –   | 1   | +   | –   | III |
| <i>Hypericum perforatum</i>                        | –   | –   | +   | +   | +   | –   | III |
| <i>Sanguisorba minor</i>                           | –   | –   | +   | –   | +   | +   | III |
| <i>Stauracanthus boivinii</i>                      | –   | +   | –   | –   | ()  | –   | II  |
| <i>Erophaca baetica</i>                            | –   | –   | –   | +   | –   | +   | II  |
| <i>Erica lusitanica</i>                            | –   | –   | +   | –   | +   | –   | II  |
| <i>Lonicera etrusca</i>                            | +   | –   | –   | –   | +   | –   | II  |
| <i>Olea europaea</i> var. <i>sylvestris</i>        | –   | –   | –   | +   | +   | –   | II  |
| <i>Teucrium haenseleri</i>                         | –   | –   | –   | +   | +   | –   | II  |
| <i>Avenula sulcata</i> subsp. <i>occidentalis</i>  | –   | –   | +   | –   | +   | +   | II  |
| <i>Brachypodium phoenicoides</i>                   | –   | –   | +   | –   | –   | +   | II  |
| <i>Holcus lanatus</i>                              | –   | –   | –   | +   | +   | –   | II  |

In addition. En plus: *Centaurea ornata* subsp. *interrupta* + (1); *Cytinus hypocistis* subsp. *macracanthus* + (1); *Neotinea maculata* + (2); *Dittrichia viscosa* subsp. *revoluta* + (2); *Halimium ocymoides* + (2); *Bellis perennis* + (2); *Elaeoselinum foetidum* + (2); *Carlina corymbosa* + (2); *Arrhenatherum album* + (2); *Cistus crispus* + (2); *Rumex induratus* + (2); *Clematis flammula* + (3); *Orchis morio* + (3); *Hypochoeris radicata* + (3); *Rosa pouzinii* + (3); *Epipactis tremolsii* + (4); *Orobanche ramosa* subsp. *mutelii* + (4); *Linaria oblongifolia* subsp. *haenseleri* + (4); *Coronilla glauca* + (4); *Sanguisorba hybrida* + (5); *Calluna vulgaris* + (5); *Lithodora lusitanica* + (5); *Digitalis purpurea* + (5); *Aristolochia paucinervis* + (5); *Quercus lusitanica* + (6); *Viburnum tinus* + (6); *Halimium lasianthum* + (6).

Sites. Emplacements (geographical coordinate system Datum WGS84): 1. Rib.<sup>a</sup> do Vale Formoso (Near Javali; lat 37°14'12.83"N, long 7°54'36.87"W); 2. Seixo Branco (Near Fonte da Rata; lat 37°16'19.28"N, long 7°52'26.86"W); 3. B.co do Vale Formosil (Near Barranco do Velho; lat 37°14'22.59"N, long 7°55'10.19"W); 4. Cerro dos Folhadeiros (Near Vale da Rosa; lat 37°16'25.36"N, long 7°56'55.34"W); 5. Cerro do Lincorvo (Near Cortiçadas; lat 37°16'15.56"N, long 7°56'0.42"W); 6. B.<sup>co</sup> do Fundo (Near Javali; lat 37°14'1.94"N, long 7°54'26.71"W).

described for the mesomediterranean, subhumid Lusitan-Extremadurean Subprovince, appears very close to the proposed new association *Genisto floridiae-Adenocarpe-*

*tum argyrophylli ass. nova hoc loco* (Table 4 rel. 1–10 *typus* rel. 2). Our own relevés and those provided by Cano (1988), Sánchez Pascual (1994) and Rivas-Martí-

Table 4. *As. Genisto floridae-Adenocarpetum argyrophylli* nova. (*Geniston floridae*, *Cytisetalia scopario-striati*, *Cytisetea scopario-striati*).Tableau 4. *As. Genisto floridae-Adenocarpetum argyrophylli* nova. (*Geniston floridae*, *Cytisetalia scopario-striati*, *Cytisetea scopario-striati*).

| No. of orders                                  | 1   | 2   | 3   | 4   | 5   | 6   | 7   | 8   | 9   | 10  | P   |
|--|-----|-----|-----|-----|-----|-----|-----|-----|-----|-----|-----|
| Altitude 1 = 10 m                              | 117 | 106 | 114 | 122 | 117 | 116 | 116 | 114 | 117 | 110 | R   |
| Surface 1 = 10 m <sup>2</sup>                  | 20  | 20  | 20  | 15  | 20  | 20  | 10  | 10  | 40  | 20  | E   |
| Cover rate (%)                                 | 50  | 60  | 60  | 70  | 60  | 60  | 60  | 60  | 60  | 50  | S   |
| Slope (%)                                      | 5   | 10  | 10  | 15  | .   | 25  | 30  | 30  | .   | .   | E   |
| Orientation                                    | N   | N   | NE  | NW  | .   | S   | W   | N   | .   | .   | N   |
| No. of species                                 | 8   | 9   | 9   | 6   | 6   | 9   | 6   | 9   | 8   | 6   | C   |
|  |     |     |     |     |     |     |     |     |     |     | E   |
| <b>Characteristic of as. and higher units.</b> |     |     |     |     |     |     |     |     |     |     |     |
| <i>Adenocarpus argyrophyllus</i>               | 2   | 3   | 2   | 2   | 3   | 3   | 3   | 3   | 3   | 2   | V   |
| <i>Genista florida</i>                         | 2   | 2   | 3   | 3   | .   | .   | .   | .   | .   | .   | III |
| <b>Companions</b>                              |     |     |     |     |     |     |     |     |     |     |     |
| <i>Digitalis mariana</i>                       | .   | +   | +   | +   | .   | +   | .   | 1   | 1   | 1   | IV  |
| <i>Jasione tomentosa</i>                       | .   | .   | .   | .   | .   | +   | 1   | 1   | +   | .   | III |
| <i>Juniperus oxycedrus</i>                     | .   | +   | .   | .   | .   | 1   | .   | .   | +   | 1   | III |
| <i>Quercus rotundifolia</i>                    | +   | +   | +   | .   | +   | 1   | .   | .   | .   | 1   | III |
| <i>Arrhenatherum elatius</i>                   | .   | .   | .   | .   | +   | +   | .   | 1   | .   | .   | II  |
| <i>Lavandula sanpaiana</i>                     | .   | .   | .   | .   | +   | .   | .   | +   | .   | 1   | II  |
| <i>Dianthus lusitanus</i>                      | .   | .   | .   | .   | .   | .   | 1   | 1   | +   | .   | II  |
| <i>Cistus ladanifer</i>                        | .   | +   | .   | .   | .   | +   | .   | 1   | .   | .   | II  |
| <i>Asphodelus albus</i>                        | +   | 2   | 1   | 1   | .   | .   | .   | .   | .   | .   | II  |
| <i>Thymus mastichina</i>                       | 1   | +   | +   | .   | .   | .   | .   | .   | .   | .   | II  |
| <i>Quercus pyrenaica</i>                       | +   | .   | .   | +   | .   | .   | .   | .   | .   | .   | I   |
| <i>Halimium ocymoides</i>                      | 1   | .   | +   | .   | .   | .   | .   | .   | .   | .   | I   |

In addition. En plus: *Urginea maritima* + in 3; *Rosmarinus officinalis* + in 3; *Festuca elegans* + in 1; *Linaria spartea* 1 in 5; *Geranium robertianum*, *Sedum brevifolium* + in 6; *Umbilicus rupestris* 1, *Mucizonia hispida* + in 7; *Rhynchosinapis longirostra* + in 8; *Jasione mariana* 1, *Mercurialis annua* 1 in 9; *Rumex angiocarpus* 1 in 6.

Sites. Emplacements: 1. Collado de la Estrella, 2. Peña Malabrigo, 3. Peaks of La Estrella, 4. Pico de La Estrella, 5. to 10. Peaks of Sierra Quintana. (province de Jaén).

nez et al. (2002) under the name of *Adenocarpetum argyrophylli* are also very similar. This association was proposed by the authors for the mesomediterranean, subhumid quartzites of the Parque Natural de Montfrágüe and presents *Adenocarpus argyrophyllus* (Lam.) DC., *Cytisus multiflorus* (L'Hér.) Sweet., *Adenocarpus complicatus* (L.) J. Gay. However, the samples taken in the quartzitic, supramediterranean peaks of Sierra Morena do not include these last two species and present *Genista florida* L. as a differential taxon. The new association proposed – *Genisto floridae-Adenocarpetum argyrophylli* – occurs in the supramediterranean, humid Marianense Subsector, and represents the rim of the oak grove of *Sorbo torminalis-Quercetum pyrenaicae* Rivas Goday ex Rivas-Martínez 1987. Relevés 5–10 of Table 4 were made in the peaks of Sierra de Quintana (Jaén) and they appear in the cluster together with the original samples of *Adenocarpetum argyrophylli* because of the absence of *Genista florida* L. Nevertheless, we prefer to include them in the new association, because they form the rim of the supramediterranean oak grove of *Sorbo torminalis-Quercetum pyrenaicae*.

The table provided by Galán (1993) for Cádiz is dominated by *Retama monosperma* (L.) Boiss. and belongs to *Centaureo sphaerocephalae-Retametum monospermae* Tregubov 1963. *Cytisetum cabezudo* J.C. Costa, Lousa, Capelo and Ladero in J.C. Costa et al. 2003, described for the thermomediterranean and dry

areas of the Algarvean, Coastal-Vicentean and Sadensean territories (Costa et al. 2003) appears very close to the previous group.

The cluster analysis also shows a group of relevés clearly separated from the rest. These relevés were included in *Retamo sphaerocarphae-Cytisetum bourgaei* Rivas-Martínez and Belmonte ex Capelo 1996 and *Adenocarpus telonensis-Cytisetum bourgaei* Cano 2007. The group of relevés, as a whole, corresponds to this last association, described for the mesomediterranean, subhumid-humid belt of the central areas of Sierra Morena (Cano 2007).

The relevés of Galán (1993) belonging to the association *Cytiso baetici-Telinetum monspessulanae* Rivas-Martínez, Galán and Cantó in Rivas-Martínez et al. (2002) remain included in subgroup Sb<sub>4</sub>, together with our own relevés in which *Cytisus scoparius* (L.) Link var. *oxyphyllus* is dominant. These are the relevés that we have previously proposed under the name of *Adenocarpus anisochili-Cytisetum scoparii* J.C. Costa et al. 2000 corr. hoc loco.

Within the large group B, Sb<sub>4</sub> comprises samples belonging to a number of associations. *Cytiso oromediterranei-Genistetum cinerascens* Rivas-Martínez 1970 corr. Rivas-Martínez and Cantó 1987 is a community described for the middle and upper supramediterranean belts of the Guadarramean and Bejaran-Gredensean sectors. The community represents a dynamic stage of the

forests of *Luzulo forsteri-Quercetum pyrenaicae* Rivas-Martínez 1963. Within this group of relevés we can also find some samples belonging to *Genisto floridae-Cytisetum scoparii* on account of the presence of *Genista cinerascens* Lange. This association is ascribed to the lower supramediterranean Guadarramean Sector. The relevés included in *Adenocarpum argyrophylli* subas. *genistosum cinerascens* have a similar pattern. Those corresponding to *Pteridio aquilini-Cytisetum oromediterranei* Gavilán, Cantó, Fernández-González, Rivas-Martínez and Sánchez-Mata in Rivas-Martínez et al. (2002) remain at a distance from the previous ones. The association was described for the supramediterranean and suprasubmediterranean territories of the Guadarramean Sector (Rivas-Martínez et al. 2002), and can be derived from forests of both *Luzulo forsteri-Quercetum pyrenaicae* and *Pteridio aquilini-Pinetum ibericae* Rivas-Martínez in Rivas-Martínez et al. (2002).

Finally, cluster group C (samples 37–39) (Rivas Goday 1964) appears at a considerable distance from the rest of the associations and belongs to *Cytiso multiflora-Sarothamnetum eriocarpi* Rivas Goday 1964.

### Conclusions

Our statistical and phytosociological survey of 285 samples confirms that a relatively large number of them either overlap with one another or do not belong to the association previously proposed. However, despite some biogeographical and dynamic differences, the status of some associations is also confirmed because they have no floristic differences. Given the dubious occurrence of some syntaxa, we do not include them in the syntaxonomical scheme proposed for the territory under study. We propose three new associations, namely: *Genisto floridae-Adenocarpum argyrophylli* ass. *nova hoc loco* (which grows in the supramediterranean Marianense Subsector); *Cytisetum bourgaei-erocarpi* *nova*, for the mesomediterranean, subhumid and humid areas of the Araceno-Pacense Subsector; and *Lavandulo viridis-Cytisetum striati*, for the thermomediterranean, subhumid–humid Monchiquensean Sector. We also propose the correction of the name *Adenocarpo anisochili-Cytisetum scoparii* J.C. Costa et al. 2000 corr. and a status change: *Ulici latebracteati-Cytisetum striati* (Costa et al. 2000) *status novo*.

### Syntaxonomical scheme

*Cytisetea scopario-striati* Rivas-Martínez 1975

*Cytisetalia scopario-striati* Rivas-Martínez 1975

*Genistion floridae* Rivas-Martínez 1974

*Cytiso multiflora-Sarothamnetum eriocarpi* Rivas Goday 1964

*Genisto floridae-Cytisetum scoparii* Rivas-Martínez and Cantó 1987

*Adenocarpum argyrophylli* Rivas-Martínez, Cantó, Sánchez-Mata and Belmonte in Rivas-Martínez et al. 2002

*Genisto floridae-Adenocarpum argyrophylli* ass. *nova hoc loco*

*Cytiso oromediterranei-Genistetum cinerascens* Rivas-Martínez 1970 corr. Rivas-Martínez and Cantó 1987

*Pteridio aquilini-Cytisetum oromediterranei* Gavilán, Cantó, Fernández-González, Rivas-Martínez and Sánchez-Mata in Rivas-Martínez et al. 2002

*Retamion sphaerocarphae* Rivas-Martínez 1981

*Cytiso multiflora-Retametum sphaerocarphae* Rivas-Martínez ex Navarro, M. A. Sánchez, M.A. González, Gallego, Elena and C. Valle 1987

*Lavandulo sampaioanae-Cytisetum multiflora* Br.-Bl., P. Silva and Rozeira 1965

*Cytiso scoparii-Retametum sphaerocarphae* Rivas-Martínez ex V. Fuente 1986

*Retamo sphaerocarphae-Cytisetum bourgaei* Rivas-Martínez and Belmonte ex Capelo 1996

*Genistetum polyanthi* Rivas-Martínez and Belmonte ex Capelo, Lousa, and J.C. Costa 1996

*Centaureo sphaerocephalae-Retametum monospermae* Tregubov 1963

*Adenocarpo telonensis-Cytisetum bourgaei* Cano 2007

*Ulici europaei-Cytisium striati* Rivas-Martínez, Báscones, T. E. Díaz, Fernández-González and Loidi 1991

*Erico scopariae-Cytisetum grandiflorae* J.C. Costa, Lousa, Ladero and Capelo in J.C. Costa, Capelo, Lousa, Antunes, Aguiar, Izco and Ladero 2000

*Cytisetum bourgaei-erocarpi* ass. *nova hoc loco*

*Lavandulo viridis-Cytisetum striati* ass. *nova hoc loco*

*Adenocarpo anisochili-Cytisetum scoparii* J.C. Costa et al. 2000 corr. *hoc loco*

*Ulici latebracteati-Cytisetum striati* (Costa et al. 2000) *status novo*

*Genisto falcatae-Adenocarpum anisochili* Antunes, Capelo, J.C. Costa and Lousa in Costa, Capelo, Lousa, Antunes, Aguiar, Izco and Ladero 2000

*Cytisetum cabezudo* J.C. Costa, Lousa, Capelo and Ladero in J.C. Costa et al. 2003

*Cytiso villosi-Telinetalia monspessulanae* Rivas-Martínez et al. 2002

*Telinion monspessulano-linifoliae* Rivas-Martínez et al. 2002

*Cytiso baetici-Telinetum monspessulanae* Rivas-Martínez, Galán and Cantó in Rivas-Martínez et al. 2002.

## References

- Amor, A., M. Ladero, and C.J. Valle. 1993. Flora y vegetación vascular de la comarca de La Vera y laderas meridionales de la Sierra de Tormantos (Cáceres, España). *Studia Botanica* 11: 11–207.
- Alcaraz, F., P. Sánchez-Gómez, A. De La Torre, S. Ríos and J. Álvarez, 1991. *Datos sobre la vegetación de Murcia. Guía Geobotánica de la Excursión de las XI Jornadas de Fitosociología*. Barcelona: Ed. FPU. 162 p.
- Arrojo Agudo, E. 1994. *Cartografía de la vegetación presente en la Sierra de Castril: Bases para la conservación de las comunidades vegetales*. Doctoral thesis: Universidad de Granada.
- Braun-Blanquet, J. 1979. *Fitosociología: Bases para el estudio de las comunidades vegetales*. Ed. Blume, 820 p.
- Cano, E. 1988. *Estudio fitosociológico de la Sierra de Quintana*. Tesis Doctoral. Universidad de Granada, 465 p.
- Cano, E. 2007. *Análisis del paisaje vegetal de la provincia de Jaén*. Discurso de Ingreso en el IEG. Excm. Diputación Prov. de Jaén, 65 p.
- Cano, E., A. García-Fuentes, J.A. Torres, and A. Cano-Ortiz. 2006. Una nueva asociación de matorral gipsófilo para el sur de España. *Lagascalía* 26: 39–50.
- Cano, E., A. García-Fuentes, J.A. Torres, C.J. Pinto-Gomes, A. Cano-Ortiz, R.J. Montilla, J.J. Muñoz, L. Ruiz, and A. Rodríguez. 2004. Estudio de los quejigales de Sierra Morena oriental (Jaén). *Lagascalía* 24: 51–61.
- Cantó, P. 2004. Estudio fitosociológico y biogeográfico de la sierra de San Vicente y tramo inferior del valle del Alberche (Toledo, España). *Lazaroa* 25: 187–249.
- Capelo, J. 1996. Nota à sintaxonomia das orlas herbáceas florestais do sw da Península Ibérica em notas do herbario da Estação Florestal Nacional (LISFA). *Silva Lusitana* Fasc. III. 4(1): 123–5.
- Costa, J.C., C. Aguiar, J. Capelo, M. Lousa, S. Castro, J.J. Honrado, J. Izco, and M. Ladero. 2003. A clase *Cytisetea scopario-striati* em Portugal Continental. *Quercetea* 4: 45–70.
- Costa, J.C., J. Capelo, M. Lousa, J. Antunes, C. Aguiar, J. Izco, and M. Ladero. 2000. Notas do herbario da estação florestal nacional (LISFA). *Silva Lusitana* 8, no. 1: 119–128.
- Coutinho, A.X. 1939. *Flora de Portugal (Plantas Vasculares)*. 2nd edn. Lisbon: Ed. Bertrand. 933 p.
- Delgado Marzo, J.M. 2001. *Vegetación y flora de la sierra norte de Sevilla*. Doctoral thesis. Universidad de Córdoba, 399 p.
- Dominguez, E. 1987. *Cytisus* in Flora Vascular de Andalucía Occidental. Barcelona: Ed. Ketres. vol. II, 171–4.
- Galán, A. (1993). Flora y vegetación de los términos municipales de Alcalá de los Gazules y Medina Sidonia [italic] (Cádiz, España). Universidad Complutense de Madrid. Facultad de Farmacia. Departamentode Biología Vegetal II. Tesis Doctoral.
- Gómez Mercado, F. 1989. *Cartografía y estudio de la vegetación de la Sierra de Cazorla*. Doctoral thesis. Universidad de Granada, 566 p.
- Laorga Sánchez, S. 1986. *Estudio de la flora y vegetación de las comarcas toledanas del tramo central de la cuenca del Tajo*. Doctoral thesis. Universidad Complutense Madrid, 447 p.
- Maire, R. 1952–1987. *Flore de l'Afrique du Nord*. Paris: Ed. Paul Lechevalier, vols. 1–16.
- Melendo Luque, M. 1998. *Cartografía y ordenación vegetal de la sierra Morena: Parque Natural de las sierras de Cardena y Montoro (Córdoba)*. Doctoral thesis. Universidad de Jaén, 616 p.
- Navarro, F., M.A. Sánchez-Anta, M.A. González-Zapatero, F. Gallego, J.A. Elena, and C.J. Valle. 1987. Pinares y retamares meso y supramediterráneos salmantinos y zamoranos. *Lazaroa* 7: 337–349.
- Pielou, E.C. 1969. *An introduction to mathematical ecology*. New York: Wiley Interscience.
- Quézel, P. and S. Santa. 1962. Nouvelle Flore De L'Algérie et des régions désertiques méridionales. vol. [1] CNRS., Paris. [p.552].
- Quinto-Canas, R., C. Vila-Viçosa, C. Meireles, R. Paiva-Ferreira, M<sup>a</sup> C. Martínez-Lombardo, A. Cano-Ortiz, and C. Pinto-Gomes. 2010. A contribution to the knowledge of the climatophilous cork-oak woodlands from the Iberian southwest. *Acta Botanica Gallica* 157, no. 4: 627–637.
- Rivas Goday, S. 1964. *Vegetación y flórula de la cuenca extremeña del Guadiana*. Excm. Diput. Prov. de Badajoz. 777 p.
- Rivas Goday, S. 1980. Visión fito-fisiográfica del entorno alpujarreño de Lanjarón (Granada). *Anales de la Real Academia Farma* 46: 275–298.
- Rivas-Martínez, S. 1974. Vegetatio Hispanicae. Notula IV. *Annales Institut Botanica Cabanilles* 31, no. 1: 199–207.
- Rivas-Martínez, S. 1981. Sobre la vegetación de la Serra da Estrela (Portugal). *Anales de la Real Academia Farma* 47: 435–480.
- Rivas-Martínez, S. 1996a. Geobotánica y Bioclimatología. Discurso del Acto de Investidura como Doctor Honoris causa. Universidad de Granada. Granada.
- Rivas-Martínez, S. 2005. Notions on dynamic-catenal phytosociology as a basis of landscape science. *Plant Biosystems* 139, no. 2: 135–144.
- Rivas-Martínez, S. 2007. Mapa de series, geoseries y geopermaseries de vegetación de España I. *Itinera Geobotanica* 17: 1–435.
- Rivas-Martínez, S., and P. Cantó. 1987. Datos sobre la vegetación de las Sierras de Guadarrama y Malagón. *Lazaroa* 7: 235–257.
- Rivas-Martínez, S. and D. Belmonte. 1987. Sinopsis de la clase *Cytisetea scopario-striati*. VII Jornadas de Fitosociología. Salamanca, 14 p.
- Rivas-Martínez, S., F. Fernández-González, and D. Sánchez-Mata. 1986. Datos sobre la vegetación del Sistema Central y Sierra Nevada. *Opuscula Botanica Pharmaciae Complutensis* 2: 3–136.
- Rivas-Martínez, S., F. Fernández-González, J. Lodi, M. Sousa, and A. Penas. 2001. Syntaxonomical checklist of vascular plant communities of Spain and Portugal to association level. *Itinera Geobotanica* 14: 5–341.
- Rivas-Martínez, S., T.E. Díaz, F. Fernández-González, J. Izco, J. Loidi, M. Lousa, and A. Penas. 2002. Vascular plant communities of Spain and Portugal. *Itinera Geobotanica* 15, no. 1–2: 1–922.
- Ruiz Tellez, T., 1986. *Flora y vegetación del tramo medio del valle del Tietar y el campo Arañuelo*. Doctoral thesis. Universidad de Salamanca. 627 p.
- Sánchez Pascual, N. 1994. *Estudio fitosociológico y cartográfico de la comarca de Despeñaperros (Jaén)*. Doctoral thesis. Universidad de Granada, 465 p.
- Sánchez-Gómez, P. and F. Alcaraz. 1993. *Flora, vegetación y paisaje vegetal de las Sierras de Segura orientales*. Albacete: Instituto de Estudios Albacetenses, Ser. I, N<sup>o</sup> 69, 459 p.
- Talavera, S., Aedo, C., Castroviejo, S., Romero-Zarco, C., Sáez, L., Salgueiro, F.J. and Velayos, M. 1999. El género *Cytisus* in Flora Ibérica VII(I): 147–182.
- Talavera, S. 2002. *Cytisus in Checklist of vascular plants of N Morocco with identification keys*. Vol. I. Madrid. Consejo Superior de Investigaciones Científicas (CSIC). Pag. 380–383.
- Torres Cordero, J.A. 1997. *Estudio de la vegetación de las Sierras de Pandera y Alta Coloma. (Jaén)*. Doctoral thesis. Universidad de Jaén. 474 p.
- Tutin, T.G., V.H. Heywood, N.A. Burges, D.M. Moore, D.H. Valentina, S.M. Walters and D.A. Webb (eds). 1964–1980. *Flora Europaea*. Cambridge: Cambridge University Press, 1–5.
- Willkomm, H.M and J.M.Ch. Lange. 1861–1880. *Prodromus Florae Hispanicae*. Stuttgart: E. Schweizerbart E. Koch, vols. 1–3.



**Appendix. Relevés studied.**  
**Annexe. Inventaires étudiés**

| Relevés | Associations   | References                               |
|---------|--|--|
| 1–13    | <i>Erico scopariae-Cytisetum grandiflorae</i>                              | (Costa et. al. 2000, Table 3)            |
| 14–23   | <i>Adenocarpus anisochili-Cytisetum striati</i>                            | (Costa et. al. 2000, Table 4)            |
| 24–36   | <i>Genisto falcatae-Adenocarpum anisochili</i>                             | (Costa et. al. 2000, Table 5)            |
| 37–39   | <i>Cytiso multiflori-Sarothamnetum eriocarpi</i>                           | (Rivas Goday 1964, pp. 466)              |
| 40–45   | <i>Cytisetum scopario-striati genistetosum floridae</i>                    | (Amor et al. 1993, Table 13)             |
| 46–51   | <i>Cytiso multiflori-Retametum sphaerocarpace</i>                          | (Laorga Sánchez 1986, Table 96)          |
| 52–57   | <i>Genisto floridae-Cytisetum scoparii festucetosum elegantis</i>          | (Amor et al. 1993, Table 12)             |
| 58–63   | <i>Cytiso scoparii-Retametum sphaerocarpace</i>                            | (Ruiz Tellez 1986, Table 66)             |
| 64–72   | <i>Cytiso scoparii-Retametum sphaerocarpace cytisetosum multiflori</i>     | (Ruiz Tellez 1986, Table 67)             |
| 73      | <i>Retamo sphaerocarpace-Cytisetum bourgaei</i>                            | (Capelo 1996, pp. 49)                    |
| 74–75   | <i>Adenocarpus anisochili-Cytisetum scoparii</i>                           | (Table 2 own rels.)                      |
| 76–78   | <i>Genistetum polyanthi</i>  | (Delgado Marzo 2001, Table 19)           |
| 79–82   | <i>Genistetum polyanthi</i>  | (Melendo Luque 1995, Table 79)           |
| 83–86   | <i>Adenocarpus anisochili-Cytisetum scoparii</i>                           | (Table 2 own rels.)                      |
| 87–89   | <i>Retamo sphaerocarpace-Cytisetum bourgaei</i>                            | (Cano 1988, Table 46)                    |
| 90–95   | <i>Adenocarpum argyrophylli</i>  | (Cano 1988, Table 47)                    |
| 96–101  | <i>Lavandulo viridis-Cytisetum striati</i>                                 | (Table 3 own rels.)                      |
| 102–110 | <i>Retamo sphaerocarpace-Cytisetum bourgaei</i>                            | (Melendo Luque 1995, Table 78)           |
| 111–114 | <i>Genisto floridae-Cytisetum scoparii genistetosum falcatae</i>           | (Cantó 2004, Table 12)                   |
| 115–117 | <i>Adenocarpum argyrophylli genistetosum cinerascens</i>                   | (Cantó 2004, Table 11)                   |
| 118–123 | <i>Retamo sphaerocarpace-Cytisetum bourgaei var. con Cytisus scoparius</i> | (Cantó 2004, Table 13)                   |
| 124–133 | <i>Adenocarpus telonensis-Cytisetum bourgaei</i>                           | (Cano 2007, Table 1)                     |
| 134–139 | <i>Centaureo sphaerocephalae-Retametum monospermae</i>                     | ([AQ??]Galán 1993, Table 12)             |
| 140–153 | <i>Cytiso baetici-Telinetum monspessulanae</i>                             | (Galán 1993, Table 20)                   |
| 154–160 | <i>Lavandulo viridis-Cytisetum eriocarpi</i>                               | (Table 1, own rels.)                     |
| 161–170 | <i>Cytisetum cabezudo</i>  | (Costa et al. 2003, Table 14)            |
| 171–180 | <i>Genisto floridae-Adenocarpum argyrophylli</i>                           | (Table 4, own rels.)                     |
| 181–183 | <i>Genisto floridae-Adenocarpum hispanici</i>                              | (Rivas-Martínez and Cantó 1986, Table 1) |
| 184–193 | <i>Cytiso oromediterranei-Genistetum cinerascens</i>                       | (Rivas-Martínez and Cantó 1986, Table 2) |
| 194–206 | <i>Genisto floridae-Cytisetum scoparii</i>                                 | (Rivas-Martínez and Cantó 1986, Table 3) |
| 207–217 | <i>Pteridio aquilini-Cytisetum oromediterranei</i>                         | (Rivas-Martínez et al. 2002, Table 74)   |
| 218–246 | <i>Lavandulo sampaioanae-Cytisetum multiflori</i>                          | (Costa et. al. 2000, Table 1)            |
| 247–255 | <i>Adenocarpum argyrophylli</i>  | (Rivas-Martínez et al. 2002, Table 1)    |