

Molecular studies on invasion routes of *Bursaphelenchus xylophilus* in Portugal

1
2
3
4
5
6
7
8
9
10
11
12
13
14
15
16
17
18
19
20
21
22
23
24
25
26
27
28
29
30
31
32
33
34
35
36
37
38
39
40
41
42
43
44
45
46
47
48
49
50

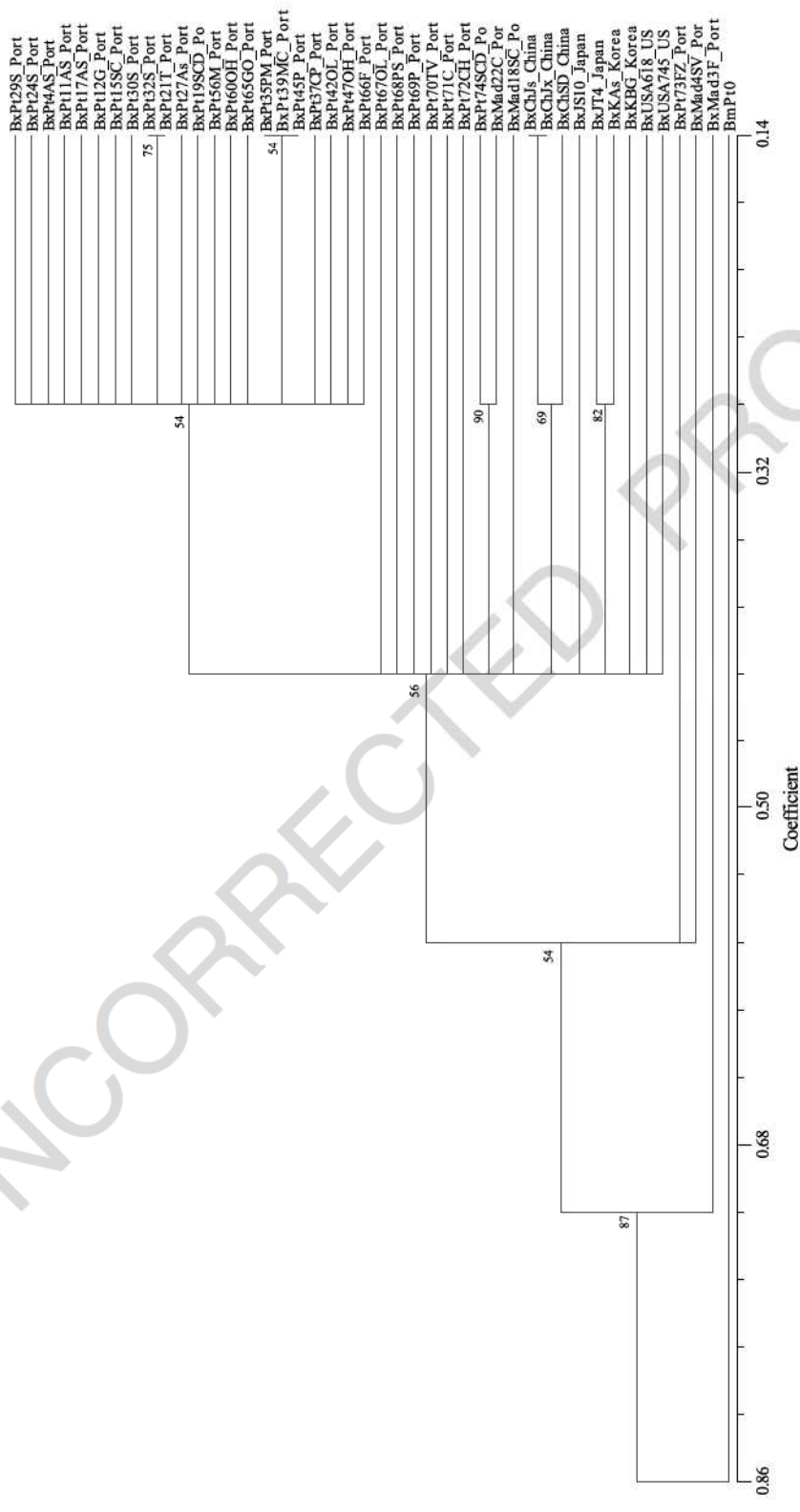


Fig. 4. UPGMA dendrogram based on the ISSR profiles of *Bursaphelenchus xylophilus* obtained with 13 primers ($r = 0.97$; $t = 7.26$). Percentage bootstrap is indicated on internal branches (1000 replicates).

51
52
53
54
55
56
57
58
59
60
61
62
63
64
65
66
67
68
69
70
71
72
73
74
75
76
77
78
79
80
81
82
83
84
85
86
87
88
89
90
91
92
93
94
95
96
97
98
99
100