

Fig. 2. Phylogenetic relationships based on Maximum Parsimony between 16 *Steinemema* species and isolates 2B, 20F, 59F and 15G, with bootstrap analysis of ITS regions.

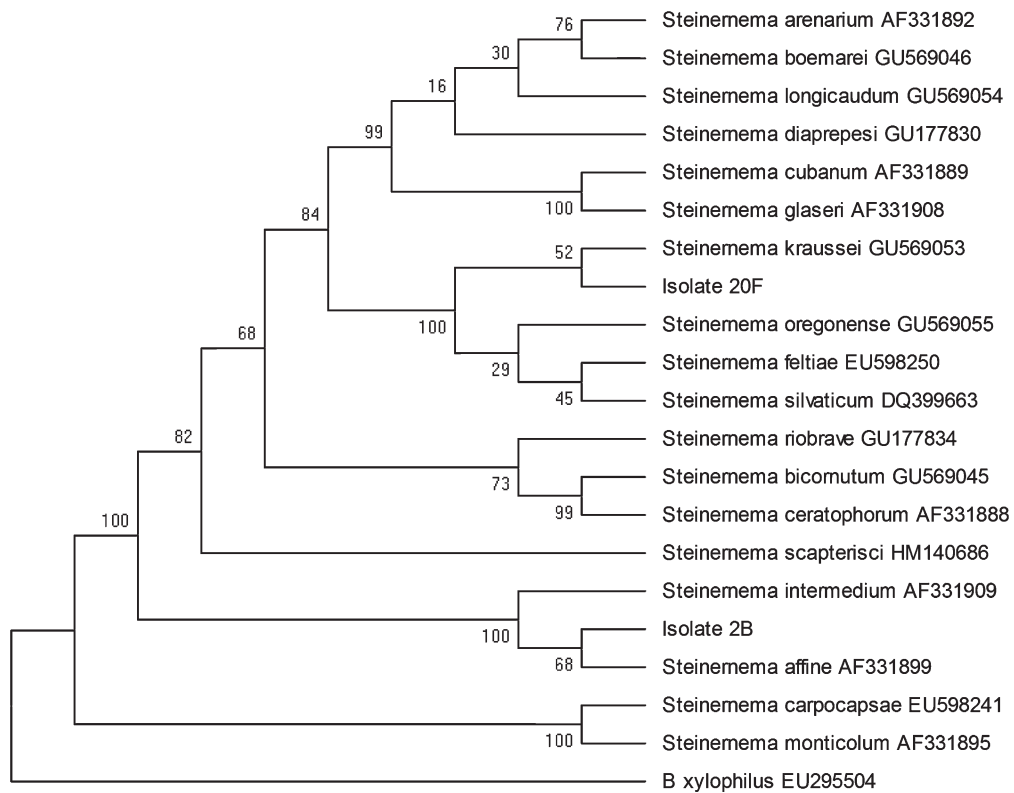


Fig. 3. Phylogenetic relationships based on Maximum Parsimony between 18 *Steinemema* species and isolates 2B and 20F, with bootstrap analysis of D2D3 regions.