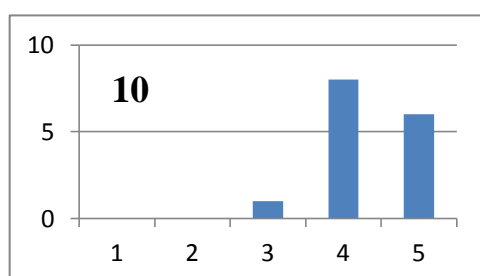
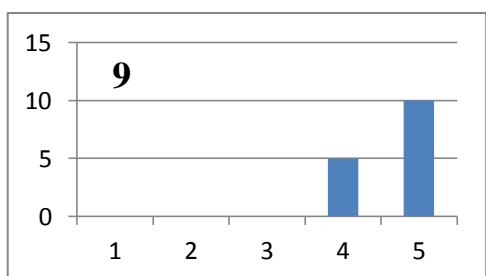
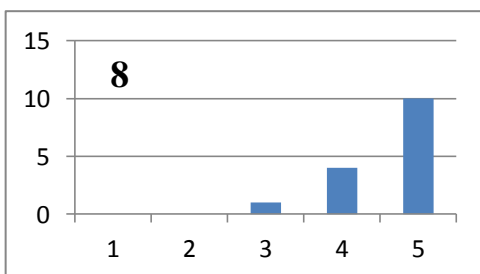
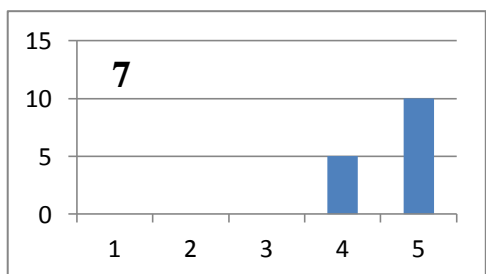
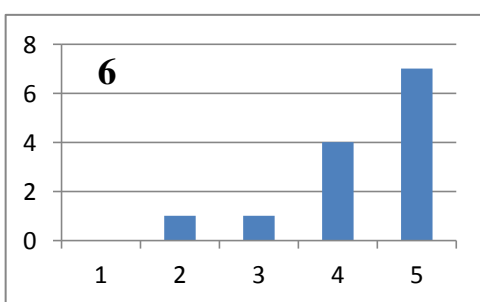
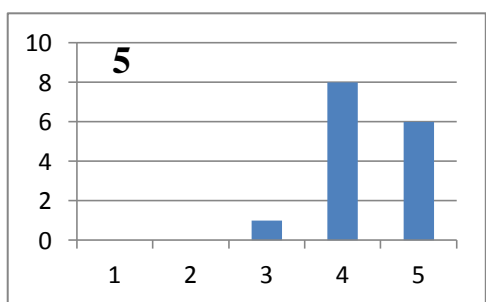
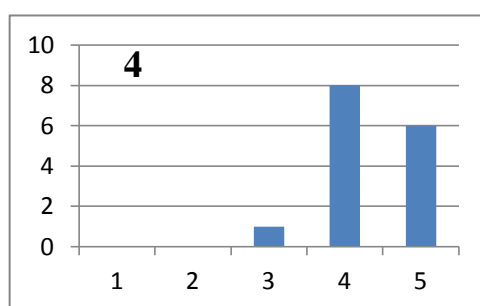
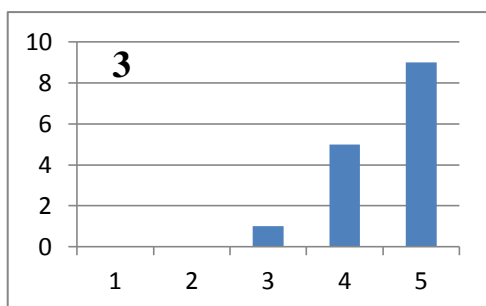
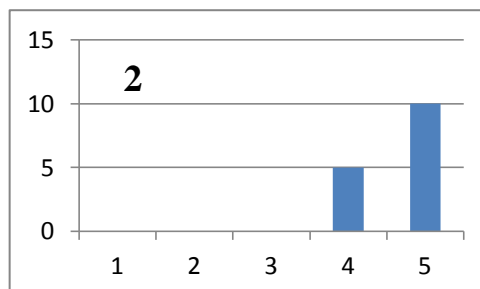
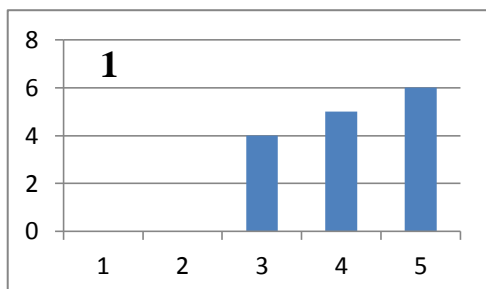
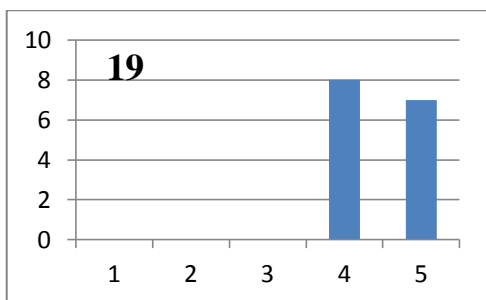
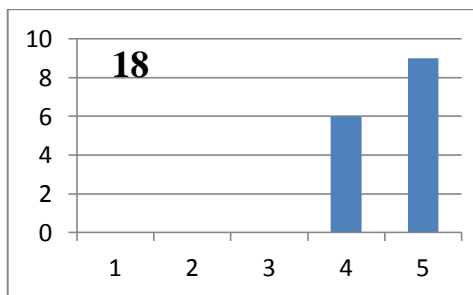
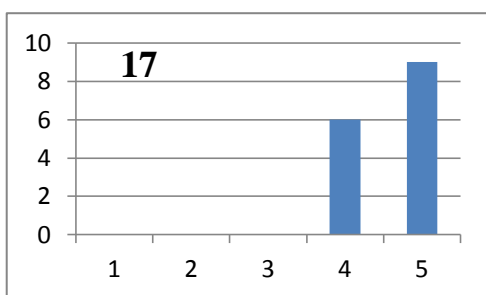
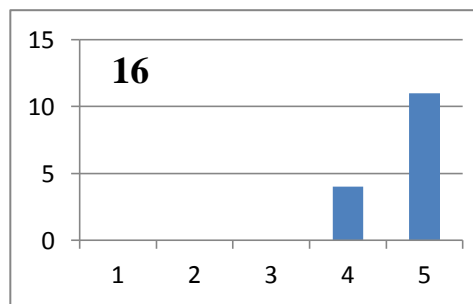
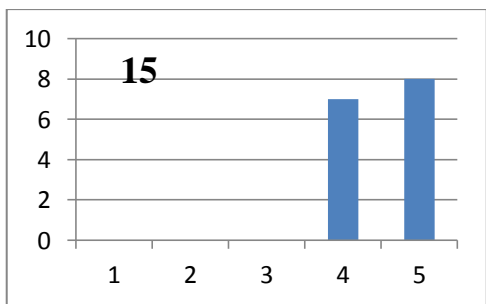
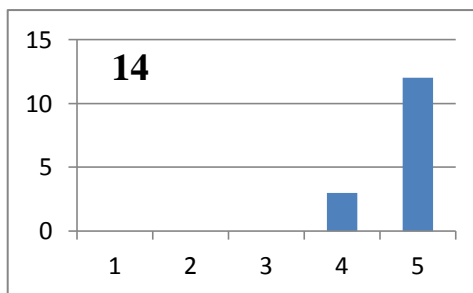
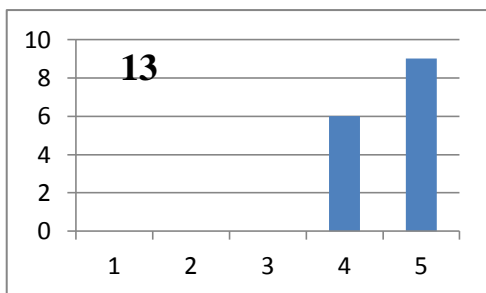
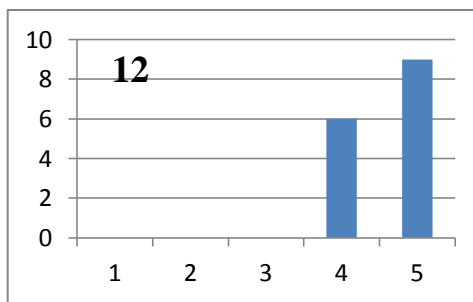
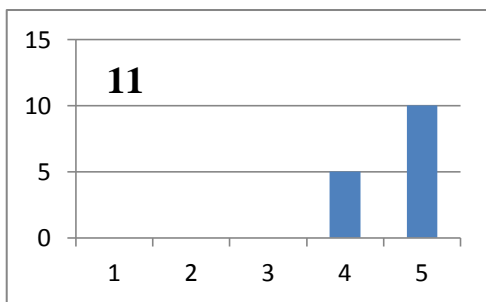


Tratamento de resultados da avaliação da docente pelos alunos do 11.º CT1

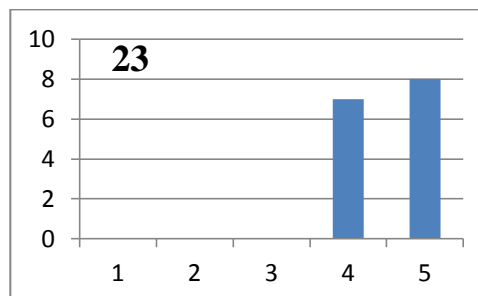
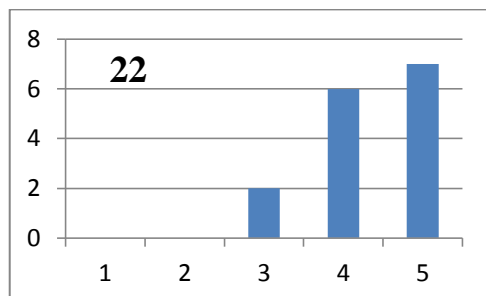
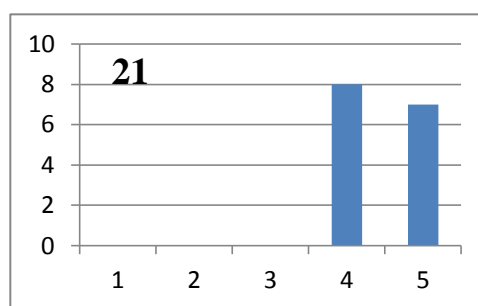
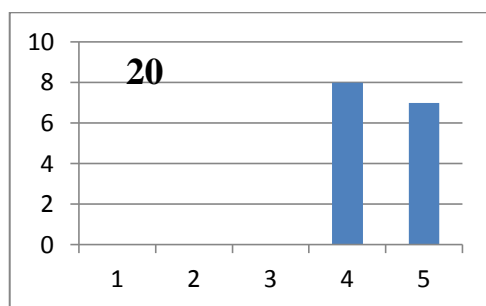
(elaborada por 15 alunos)

Grupo I: Relação aluno - professor



Grupo II: Gestão de conteúdos

Grupo III: Gestão da turma



N.º	Afirmações	Média
Grupo I: Relação aluno - professor		
1	Revela sentido de justiça face aos alunos	4,13
2	Possui sentido de humor	4,66
3	Chama-os à atenção quando necessário	4,53
4	Felicita-os e valoriza-os quando oportuno	4,46
5	Transmite aos alunos o gosto de trabalhar	4,46
6	Explica o porquê de uma repreensão / valorização	4,06
7	Respeita os alunos	4,66
8	Ouve os alunos com atenção	4,60
9	Sorri com frequência	4,66
10	Dá exemplos do quotidiano	4,46
	Média total do grupo (Σmédias/10)	4,468
Grupo II: Gestão de conteúdos		
11	Utiliza linguagem acessível e cuidada	4,66
12	Faz com que os alunos participem	4,60
13	Fornecer instrumentos de aprendizagem	4,60
14	Utiliza material adequado para a compreensão da matéria	4,80
15	Dá explicações adequadas antes de propor as tarefas	4,53
16	Mostra-se disponível para reformular as questões sempre que um aluno não compreenda	4,73
17	Domina a matéria	4,60
18	Explica a matéria de forma interessante	4,60
19	Propõe ideias que cativam os alunos	4,46
	Média total do grupo (Σmédias/9)	4,62
Grupo III: Gestão da turma		
20	Dá liberdade para que os alunos possam ser autónomos	4,46
21	Dá-lhes tempo para que possam gerir os trabalhos	4,46
22	Respeita formas de aprender e ritmos de aprendizagem	4,33
23	Permite a participação dos alunos de forma a criar dinâmica na turma	4,53
	Média total do grupo (Σmédias/4)	4,445
	Média global da avaliação (Σmédias dos grupos/3)	4,511