

Sistema Digestivo



A roda dos Alimentos

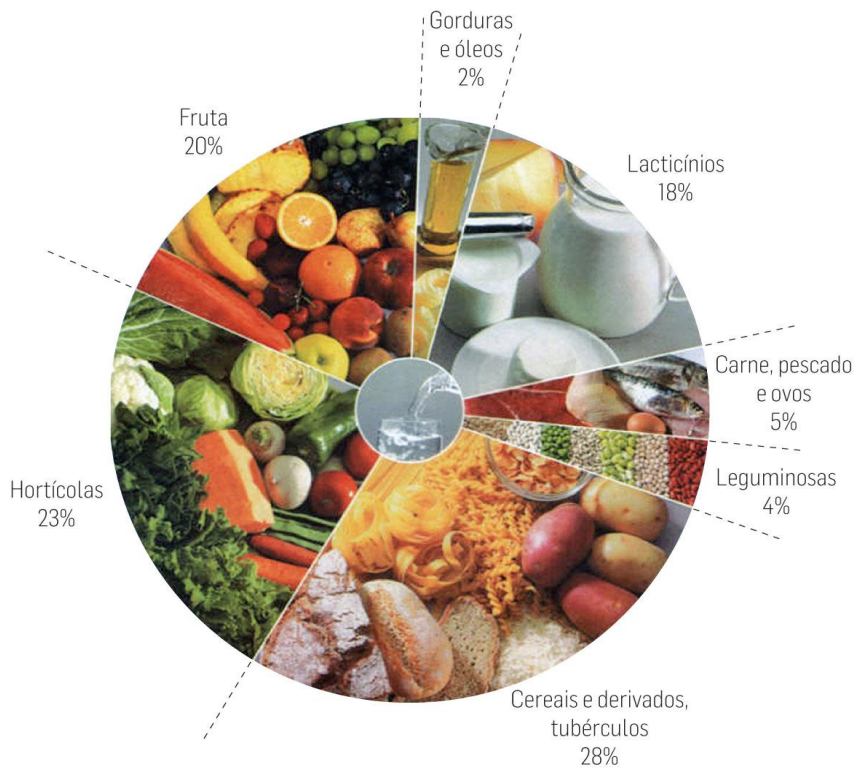




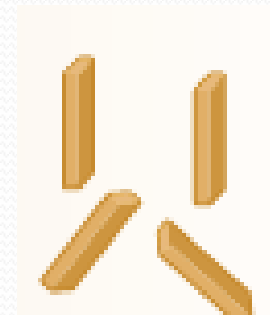
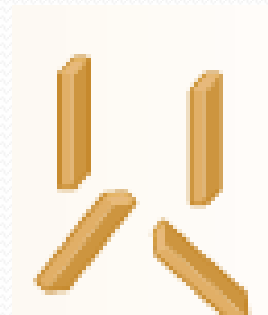
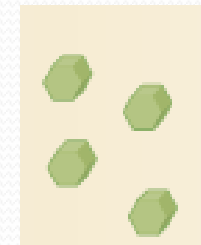
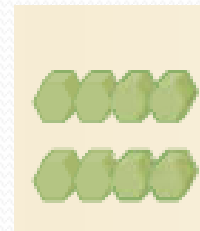
Tabela de nutrientes



Alimentos (100g)	Prótidos (g)	Lípidos (g)	Glícidos (g)	Vitaminas (µg)	Sais minerais (mg)	Fibra (celulose) (g)	Água (g)
Iogurte	1,5	--	30	0,1	482	--	68,1
Leite	3,5	0,1	5,1	1,32	422	--	90,5
Azeite	--	100	--	--	--	--	--
Maçã	0,3	0,4	14,9	2,3	90,5	2,3	84,1
Corn flakes	5,9	0,6	8,7	6	1039	3,9	--
Frango	20,2	12,6	--	8,3	576	--	66

Os grupos de nutrientes

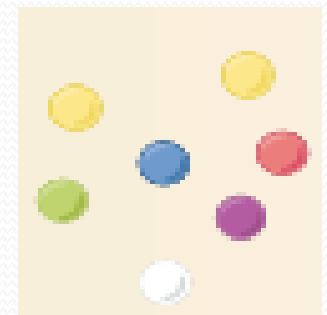
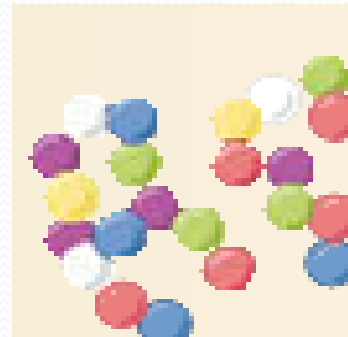
Orgânicos



Glúcidos e Fibras

Os grupos de nutrientes

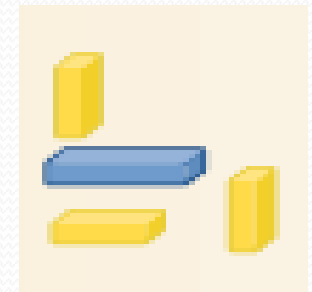
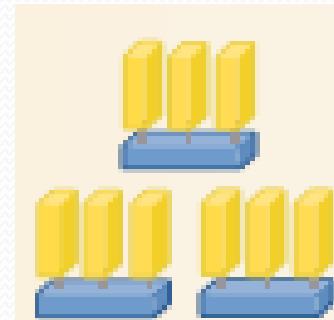
Orgânicos



Prótidos

Os grupos de nutrientes

Orgânicos



Lípidos

Os grupos de nutrientes

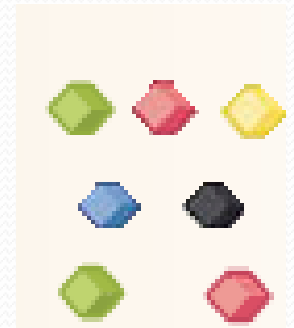
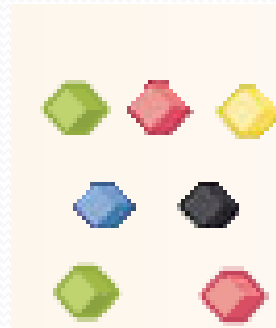
Orgânicos



Vitaminas

Os grupos de nutrientes

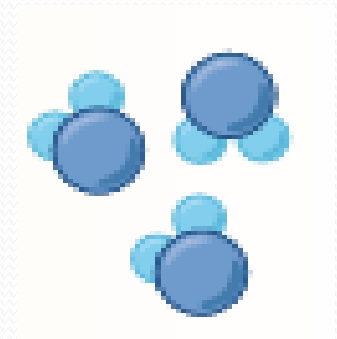
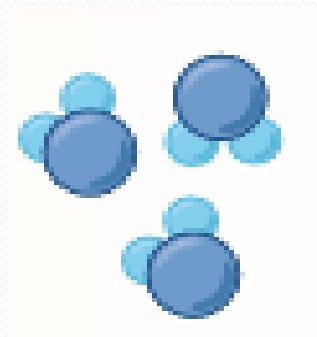
Inorgânicos



Sais minerais

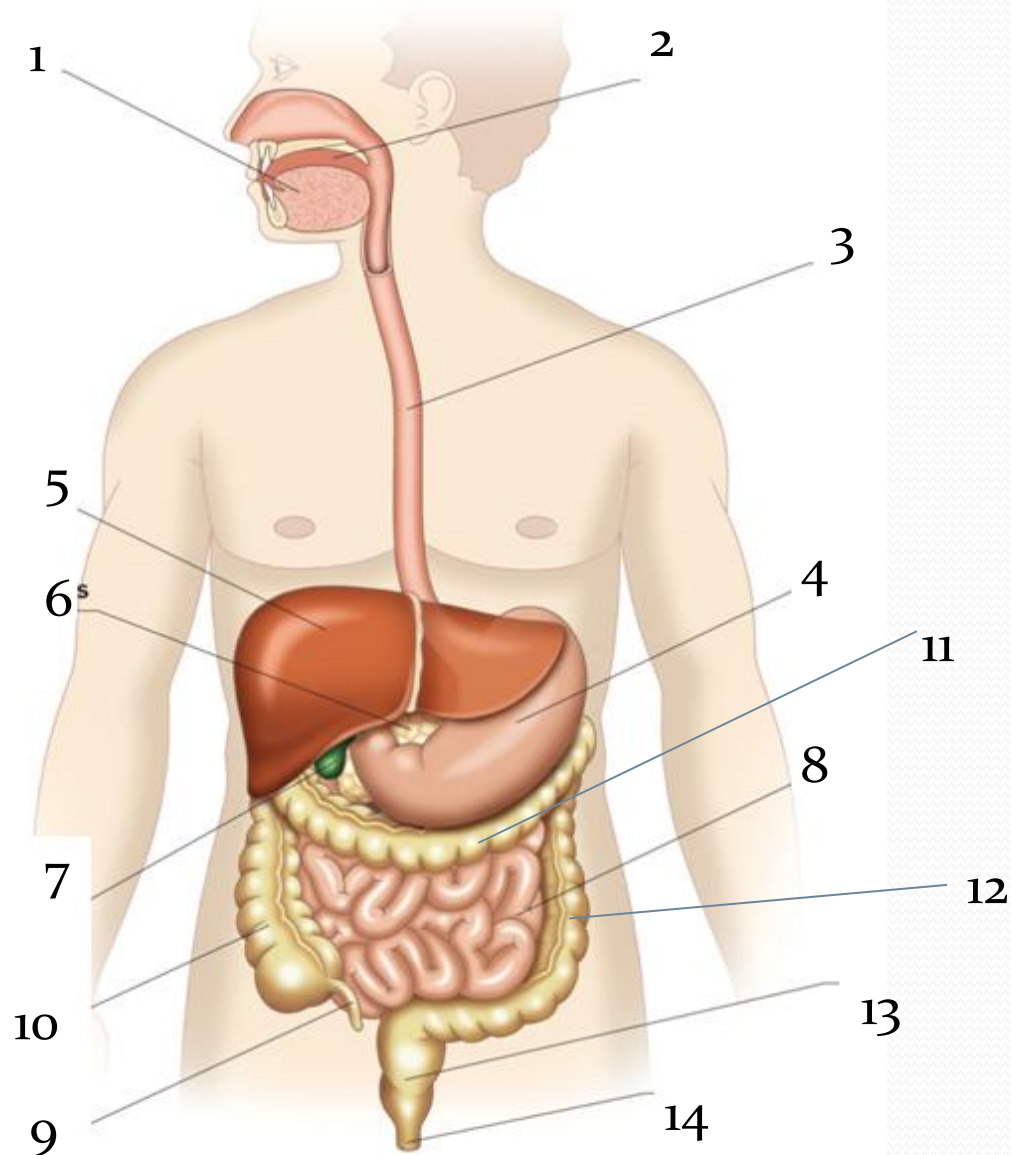
Os grupos de nutrientes

Inorgânicos



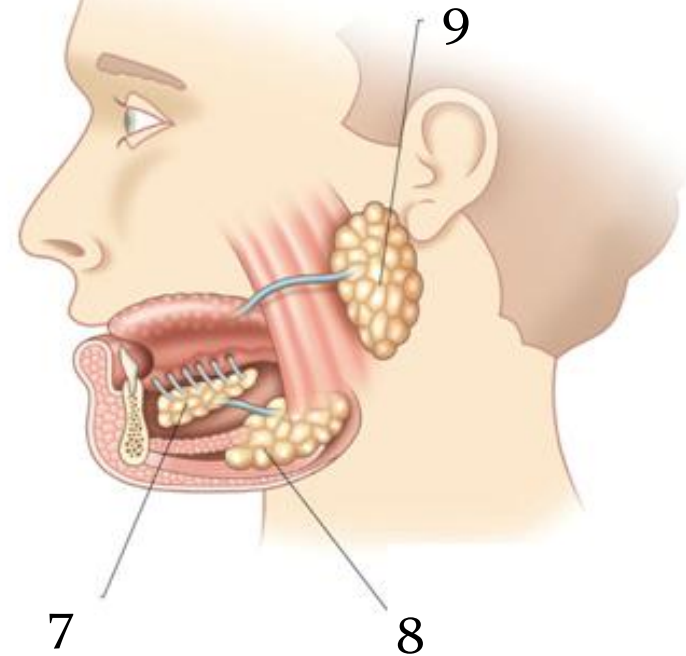
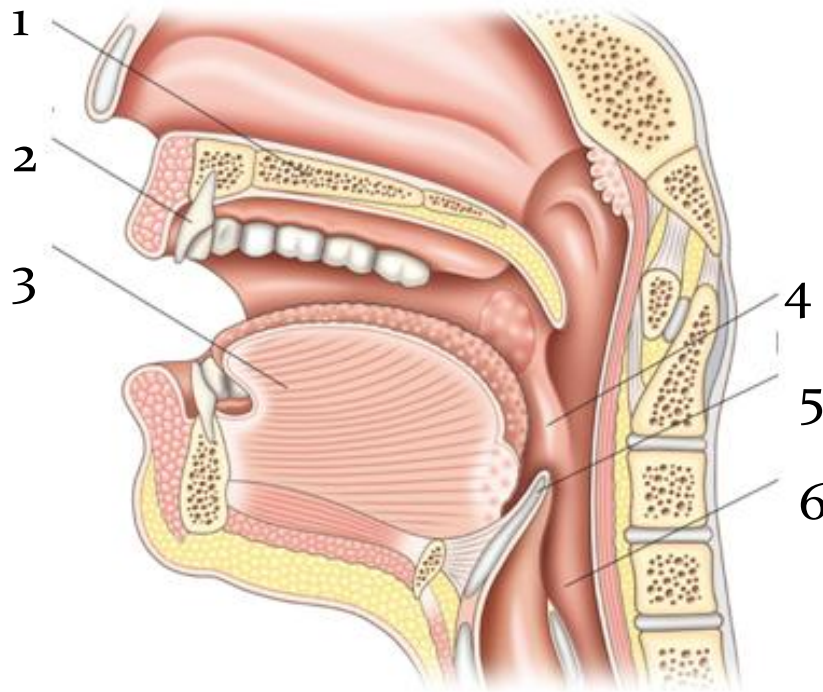
Água

Morfologia do Aparelho digestivo

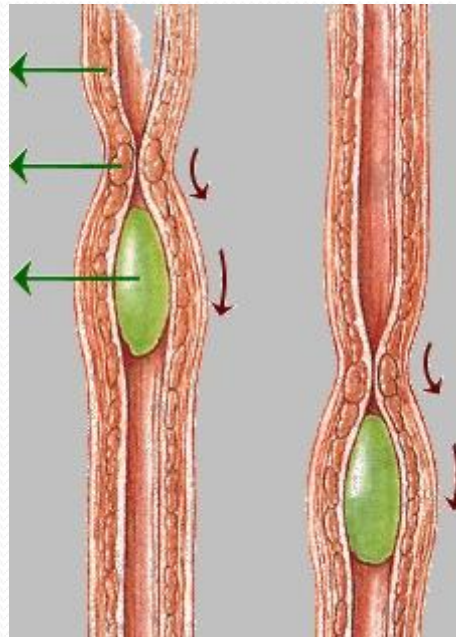


Anatomia do aparelho digestivo

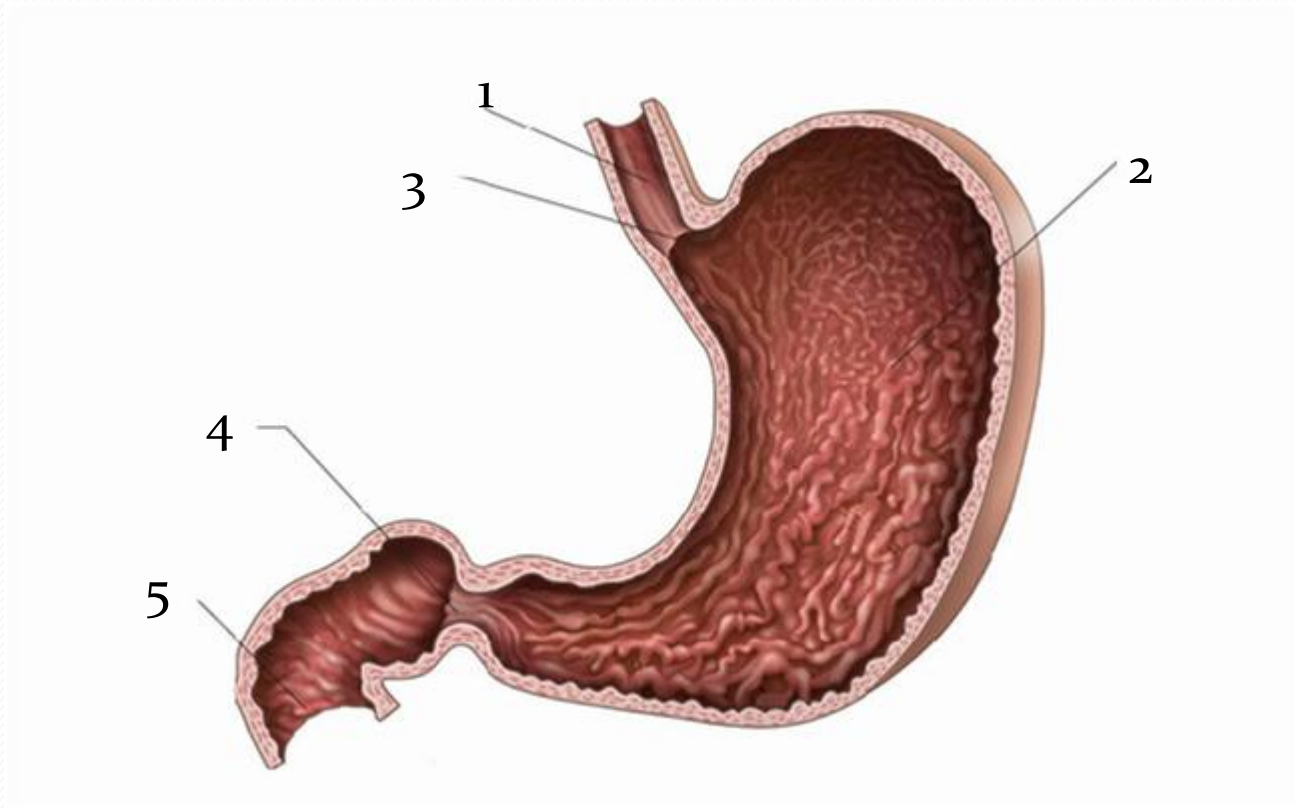
- Boca



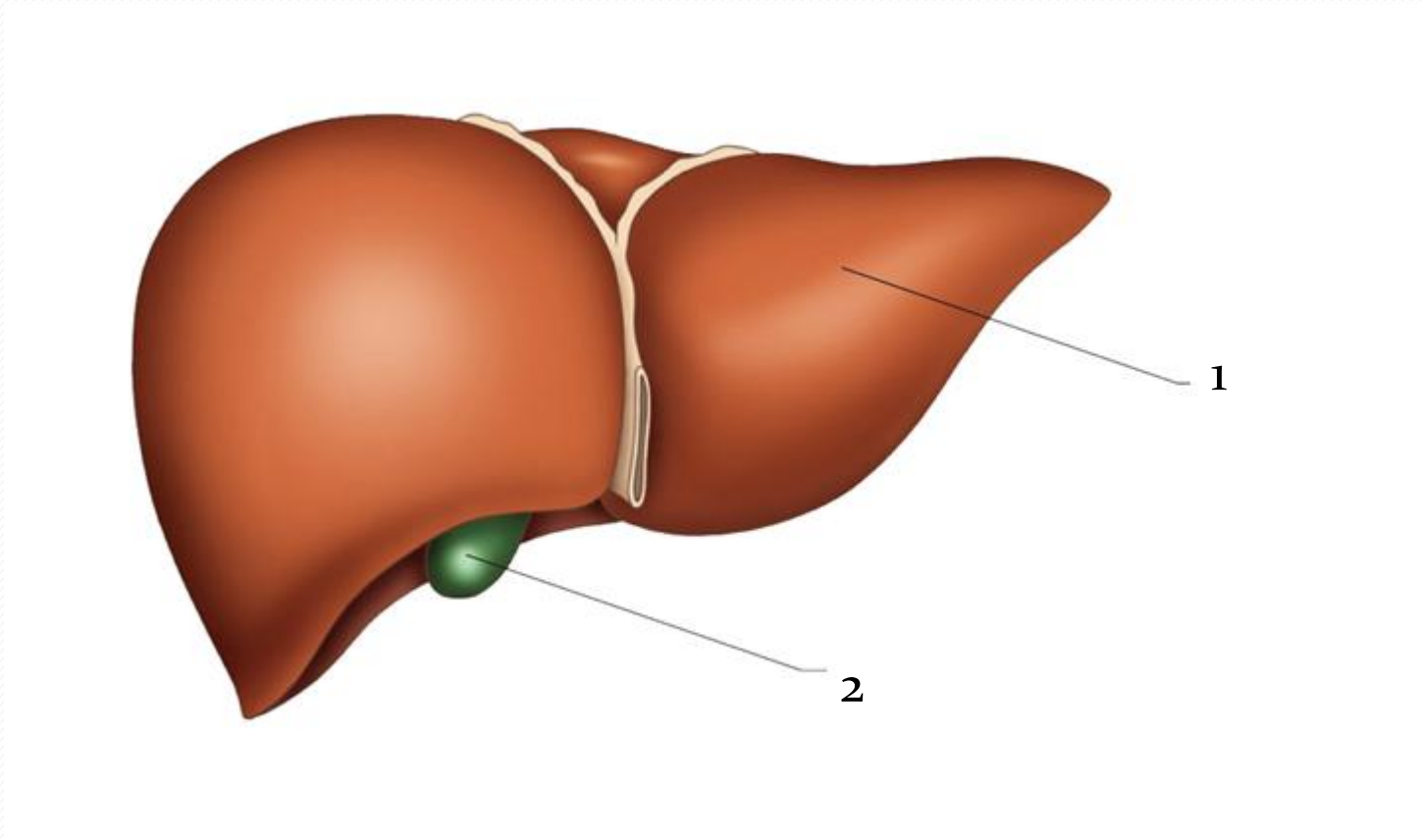
- Esófago



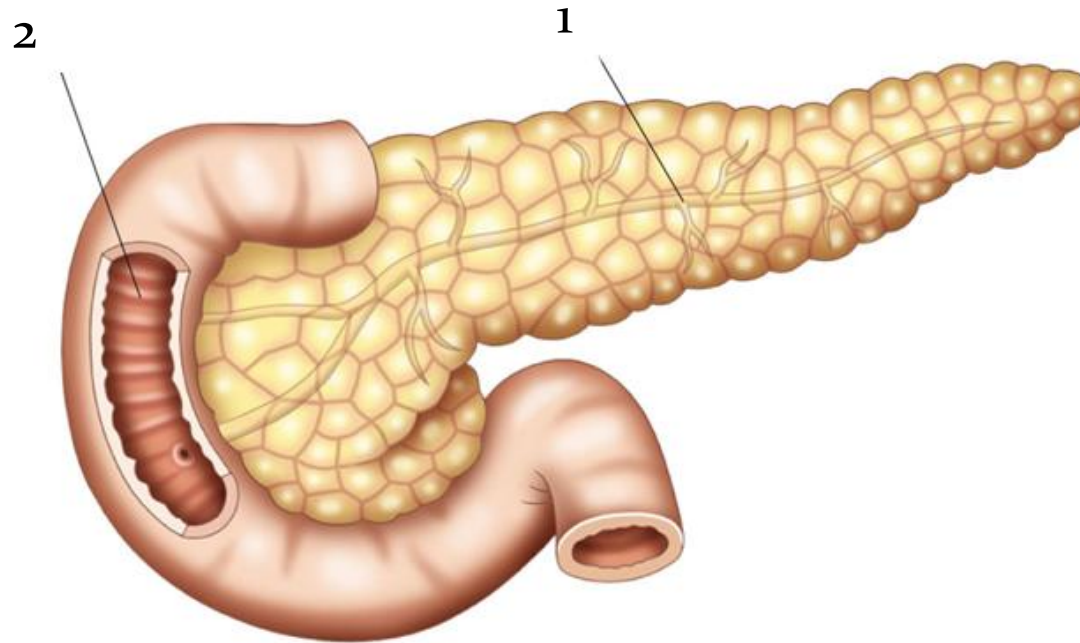
- Estômago



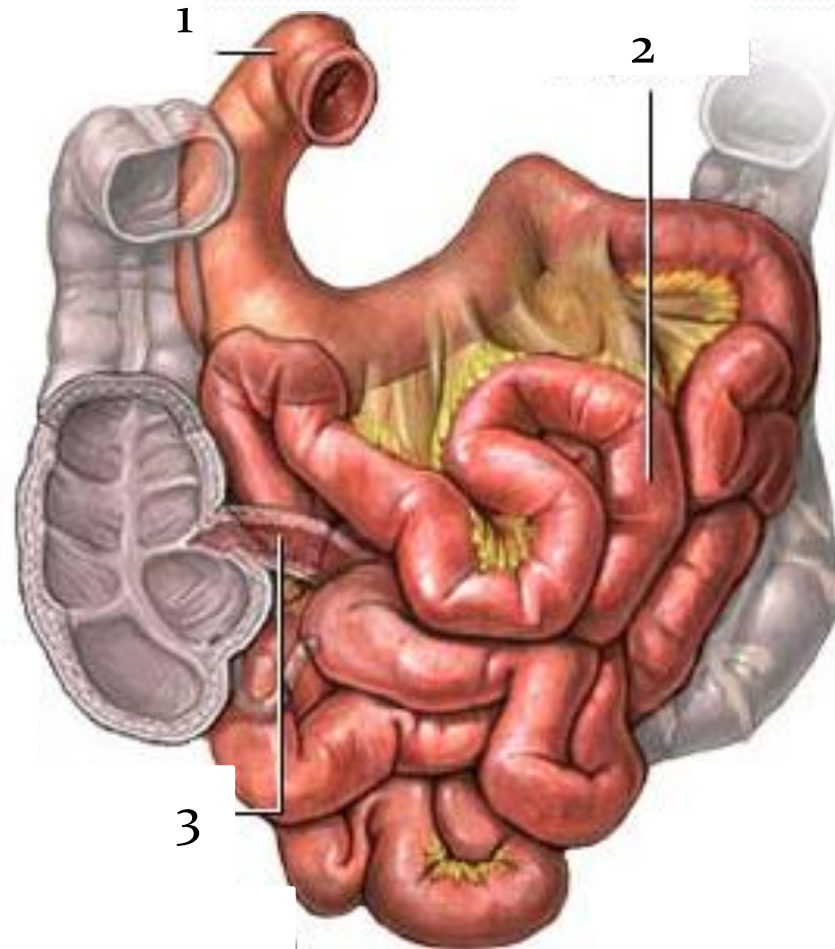
- Fígado



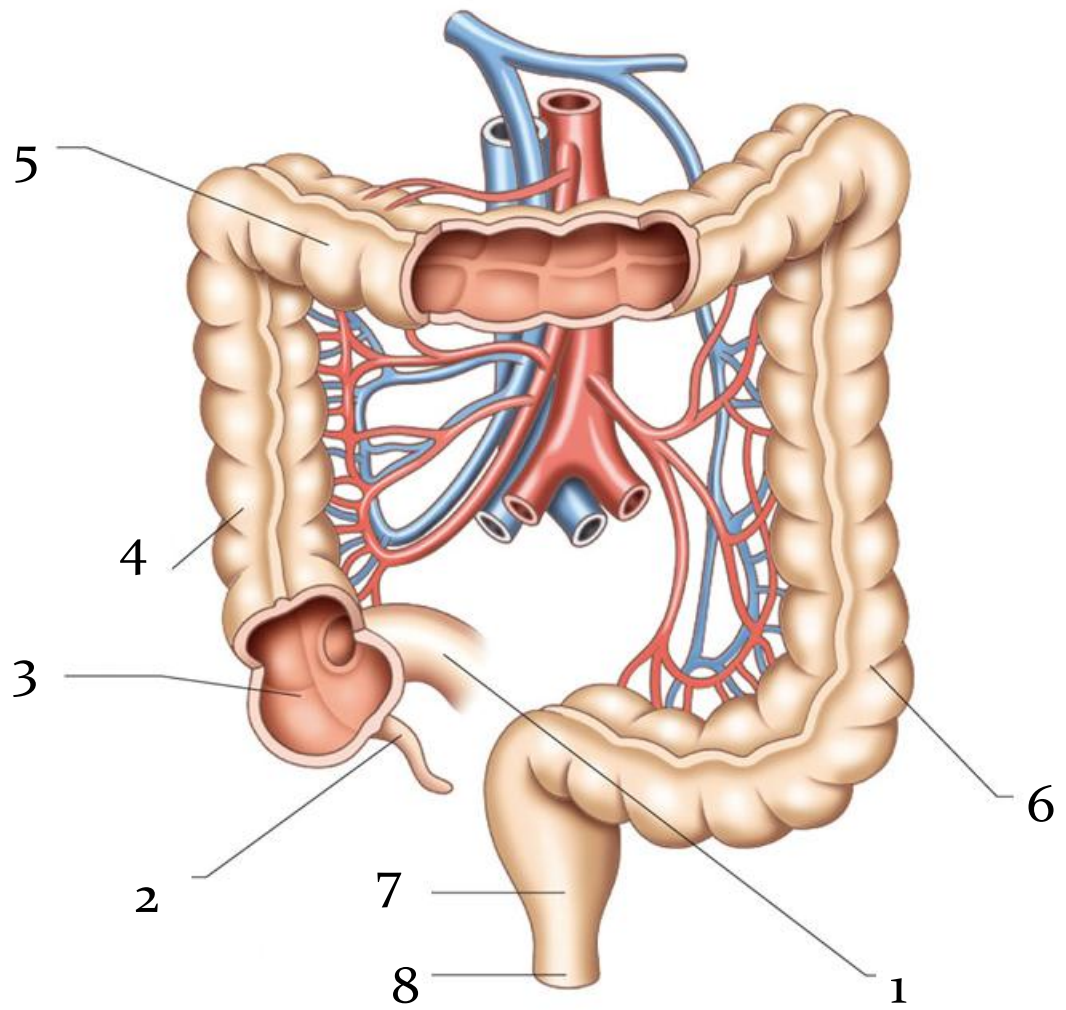
- Pâncreas





















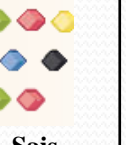




- Intestino delgado



- Intestino grosso



Nutrientes presentes nos alimentos		Glúcidos	Prótidos	Lípidos	Vita-minas	Sais minerais	Fibras (celulose)	Água
Enzimas e sua localização								
Boca 	Amilase salivar	 maltose						
Estômago 	Pepsina Lípase gástrica							
Intestino delgado 	Amílases Proteases Lípases Maltase							
Produtos finais da digestão		 Oses	 Amino-ácidos	 Ácidos gordos + glicerol	 Vitaminas	 Sais minerais	 Fibras	 Água

- Intestino delgado

