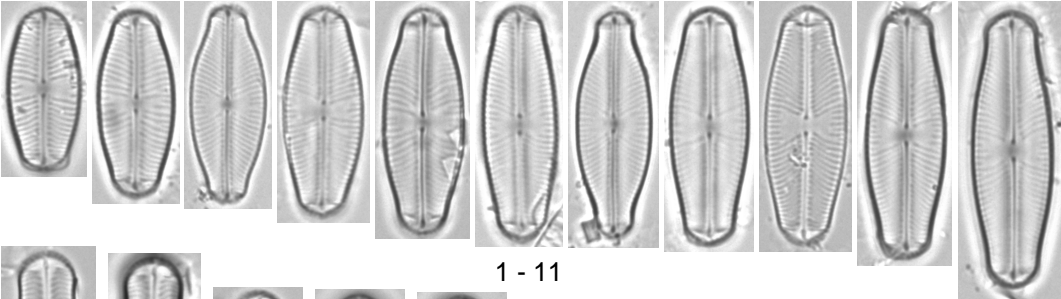
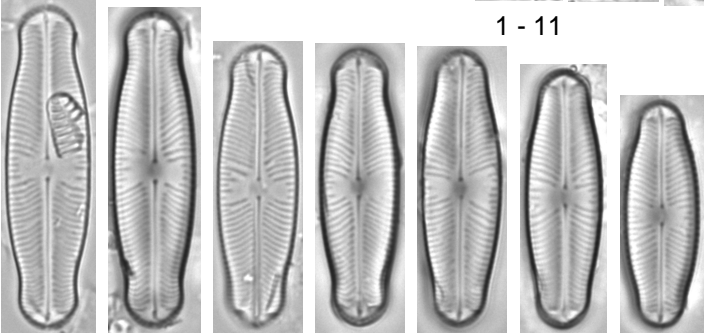


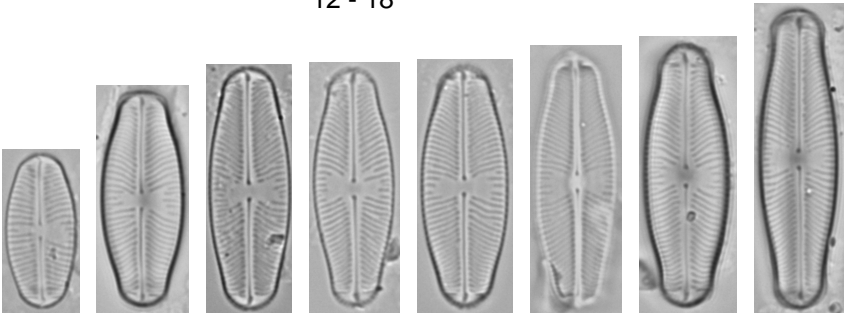
*Sellaphora*



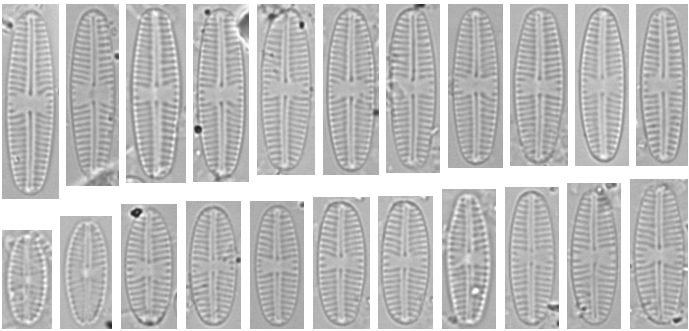
1 - 11



12 - 18



19 - 26



27 - 48



## **Plate 228**

LM: x1500

**Figs 1-3:** *Caloneis amphisbaena* (Bory) Cleve, p. 39 [CAMP]

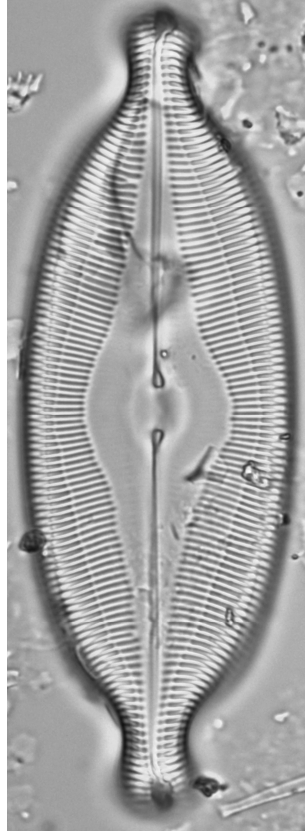
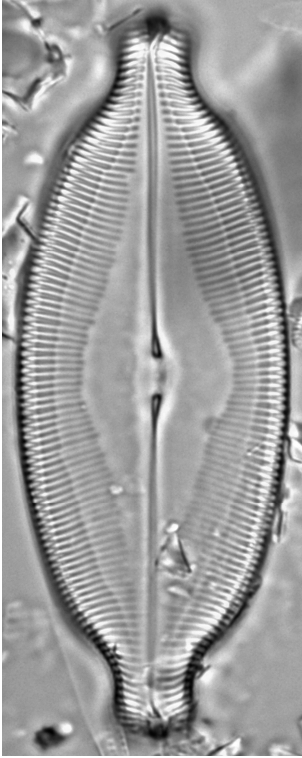
Scale bar = 10  $\mu\text{m}$

Figs 1-3: Machadinho, Guadiana River (Guadiana basin), 18-08-2006.

Figs 1-3: Valve view.



*Caloneis*



1 - 3



## Plate 229

**Figs 1-5:** *Caloneis* sp.1, p. 39

**Figs 6-12:** *Caloneis* sp.2, p. 39

**Figs 13, 14:** *Caloneis* sp.3, p. 39

**Figs 15-45:** *Caloneis* aff. *lancettula* (Schulz) Lange-Bertalot & Witkowski, p. 39

Scale bar = 10  $\mu$ m

Figs 1-12: Prata Stream (Sado basin), 02-06-2006.

Figs 13-14: Saucelle Reservoir, Douro River (Douro basin), 14-09-2007.

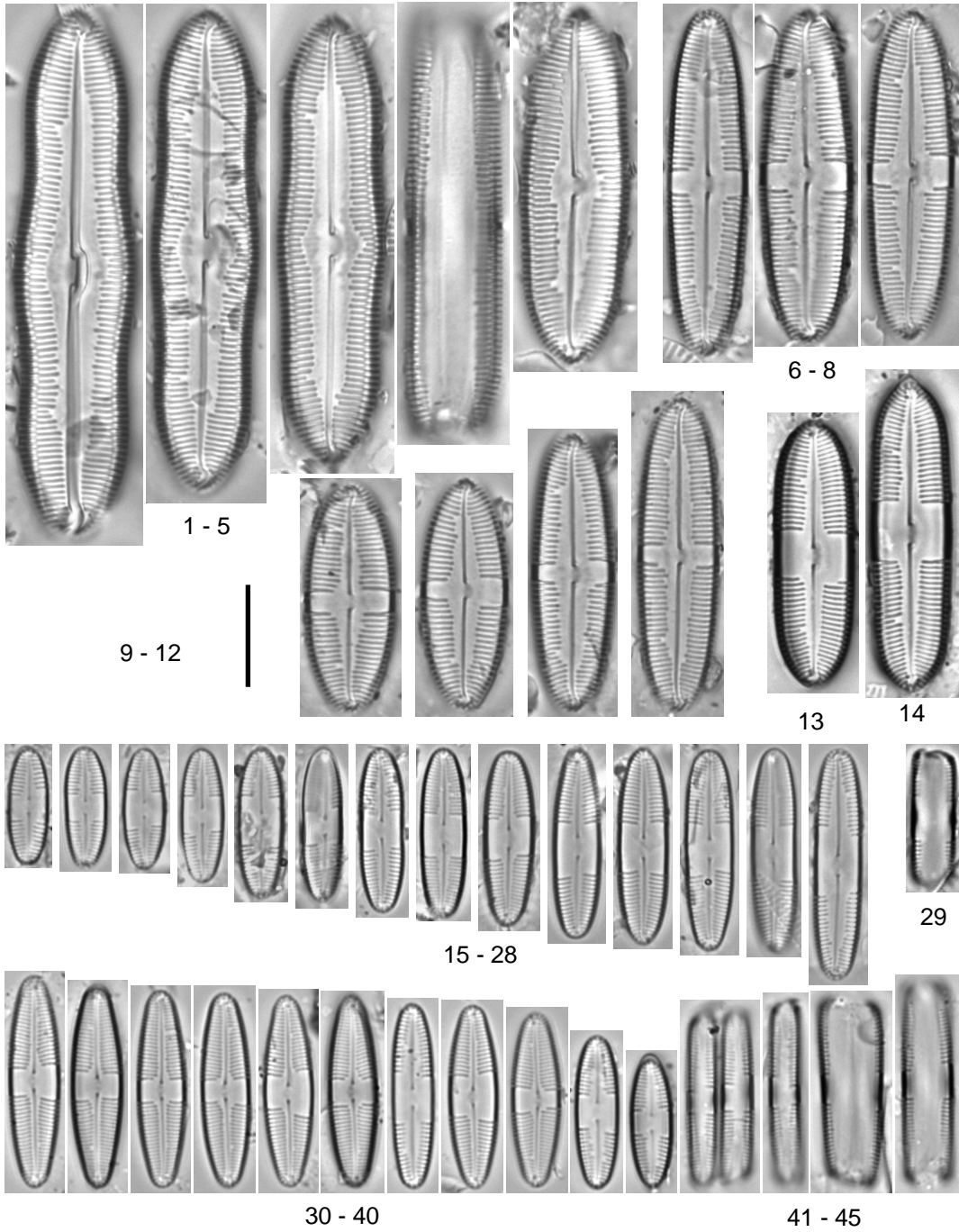
Figs 15-29: Machadinho, Guadiana River (Guadiana basin), 18-08-2006.

Figs 30-45: Benémola, Fonte Menalva Stream (Ribeiras do Algarve basin), 03-03-2006.

Figs 1-3, 5-28, 30-40: Valve view.

Figs 4, 29, 41-45: Girdle view.

*Caloneis*



## Plate 230

**Figs 1-65:** *Caloneis* aff. *lancettula* (Schulz) Lange-Bertalot & Witkowski, p. 39

Scale bar = 10  $\mu\text{m}$

Figs 1-18: Assamaça, Valmar Stream (Mondego basin), 10-06-2007.

Figs 19-34: Sado River (Sado basin), 10-05-2006.

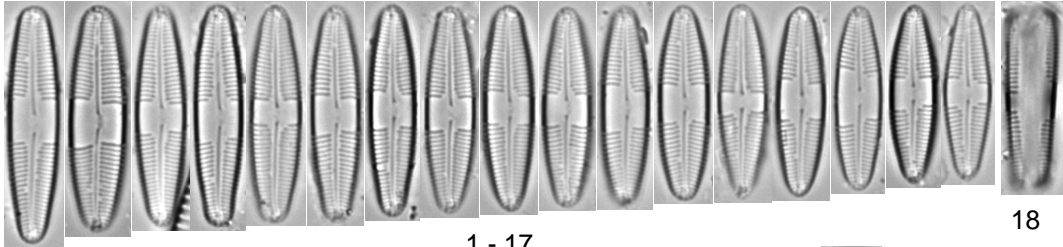
Figs 35-54: Porto de Vacas, Zêzere River (Tejo basin), 09-07-2006.

Figs 55-65: Alcabideque, Bruscos Stream (Mondego basin), 12-06-2007.

Figs 1-17, 19-32, 35-50, 55-64: Valve view.

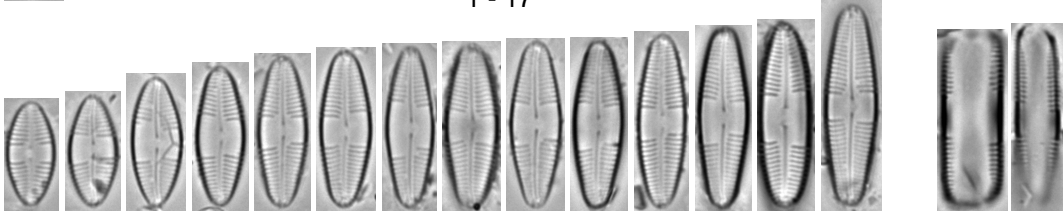
Figs 18, 33, 34, 51-54, 65: Girdle view.

*Caloneis*



1 - 17

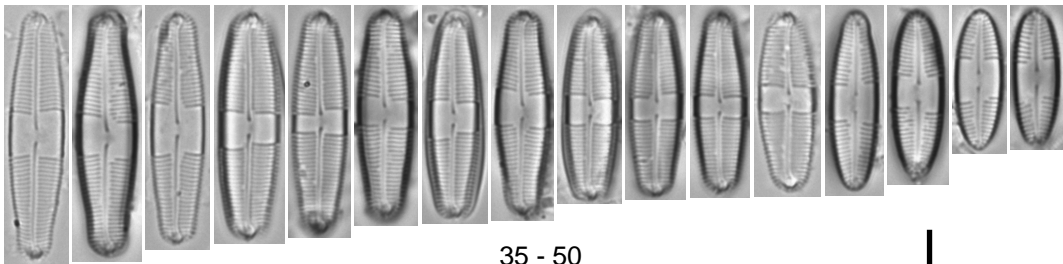
18



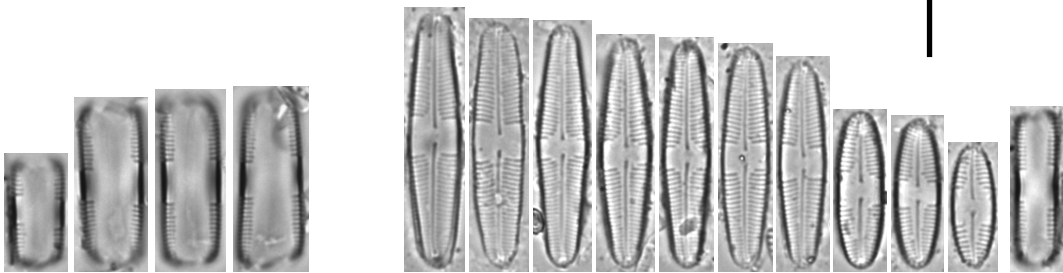
19 - 32

33

34



35 - 50



51 - 54

55 - 64

65

## **Plate 231**

LM: x1500

**Figs 1-16:** *Pinnularia subbrevistriata* Krammer, p. 40 [PSBV]

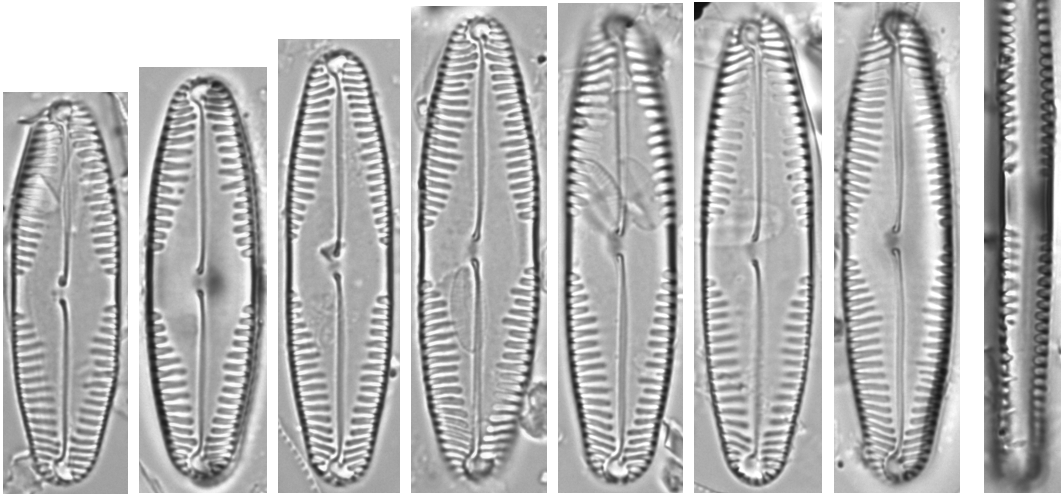
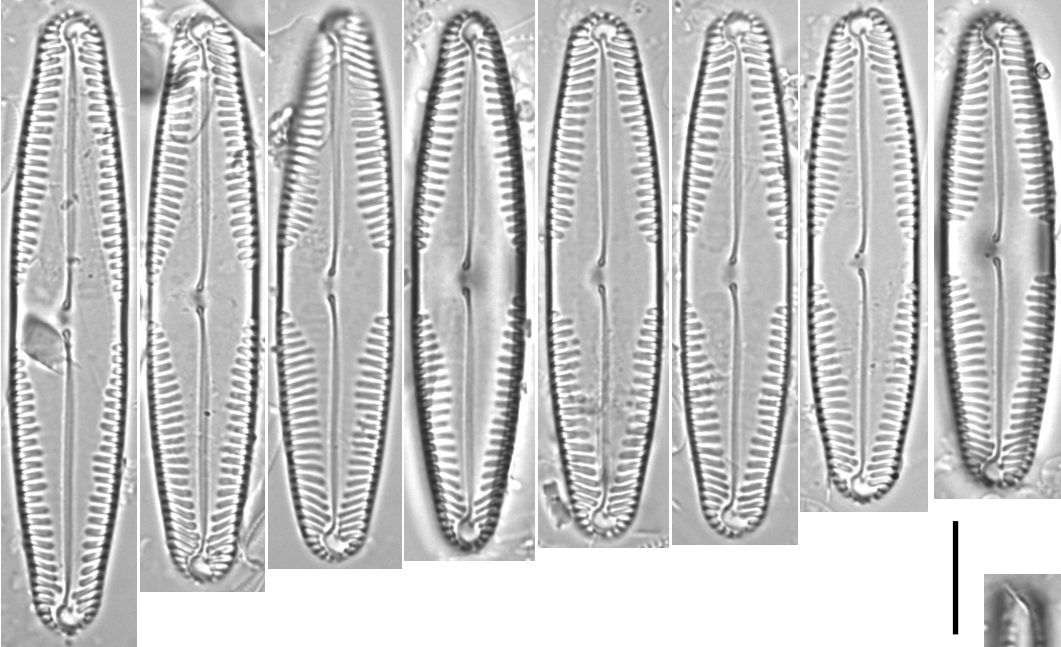
Scale bar = 10  $\mu\text{m}$

Figs 1-16: Boidobra, Corges Stream (Tejo basin), 07-07-2006.

Figs 1-15: Valve view.

Fig. 16: Girdle view.

*Pinnularia*



1 - 15

16

## Plate 232

LM: x1500

**Figs 1-17:** *Pinnularia subgibba* var. *undulata* Krammer, p. 40 [PSUN]

Scale bar = 10  $\mu\text{m}$

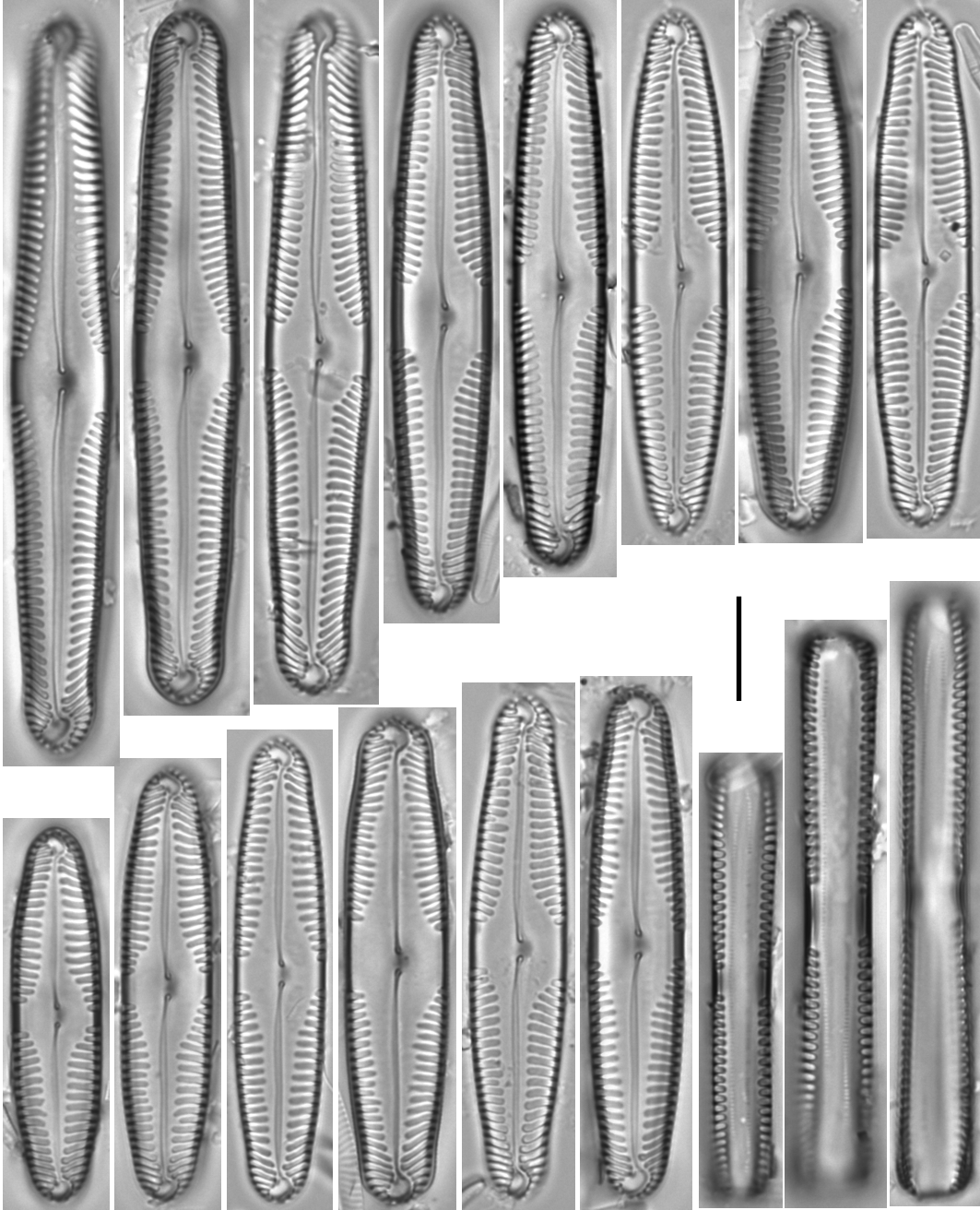
Figs 1-17: Porto de Vacas, Zêzere River (Tejo basin), 09-07-2006.

Figs 1-14: Valve view.

Figs 15-17: Girdle view.



*Pinnularia*



1 - 14

15 - 17

## Plate 233

LM: x1500

**Figs 1-22:** *Pinnularia saprophila* Lange-Bertalot, Kobayasi & Krammer, p. 40 [PSAP]

**Figs 23-44:** *Pinnularia subcapitata* Gregory, p. 40 [PSCA]

Scale bar = 10  $\mu\text{m}$

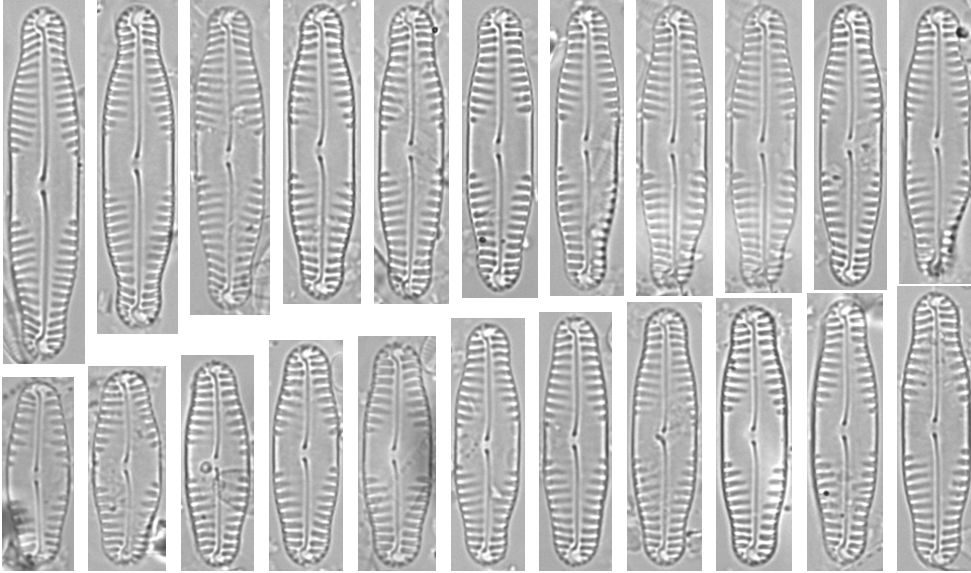
Figs 1-22: Boidobra, Corges Stream (Tejo basin), 07-07-2006.

Figs 23-34: Porto de Vacas, Zêzere River (Tejo basin), 09-07-2006.

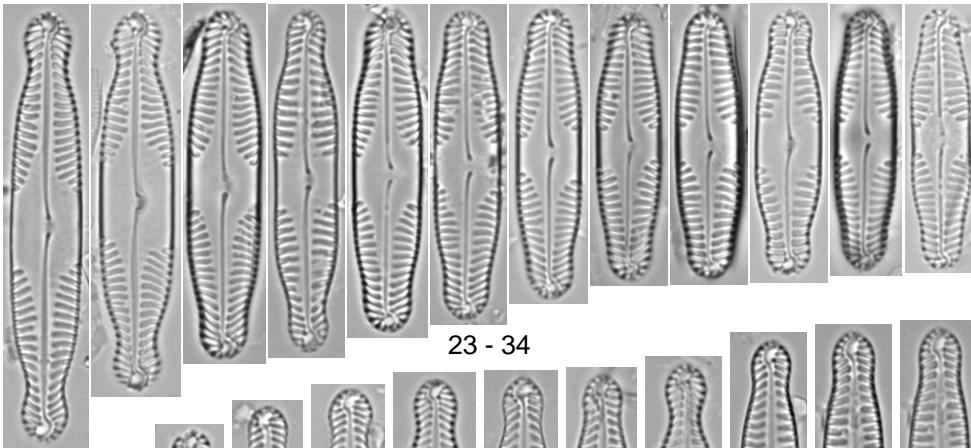
Figs 35-44: Sabugueiro, Fervença Stream (Mondego basin), 07-07-2007.

Figs 1-44: Valve view.

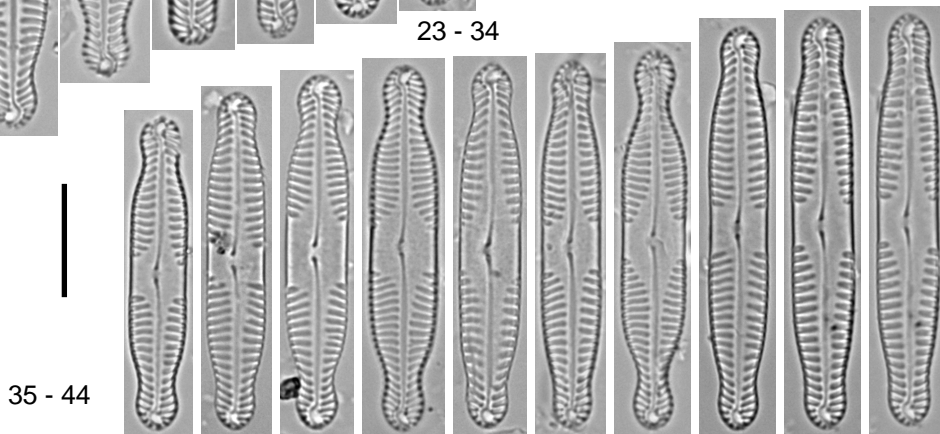
*Pinnularia*



1 - 22



23 - 34



35 - 44

## Plate 234

**Figs 1-4:** *Pinnularia subcapitata* Gregory, p. 40 [PSCA]

Scale bars (Figs 1, 2) = 5  $\mu\text{m}$  Scale bars (Figs 3, 4) = 1  $\mu\text{m}$

Figs 1-4: Porto de Vacas, Zêzere River (Tejo basin), 09-07-2006.

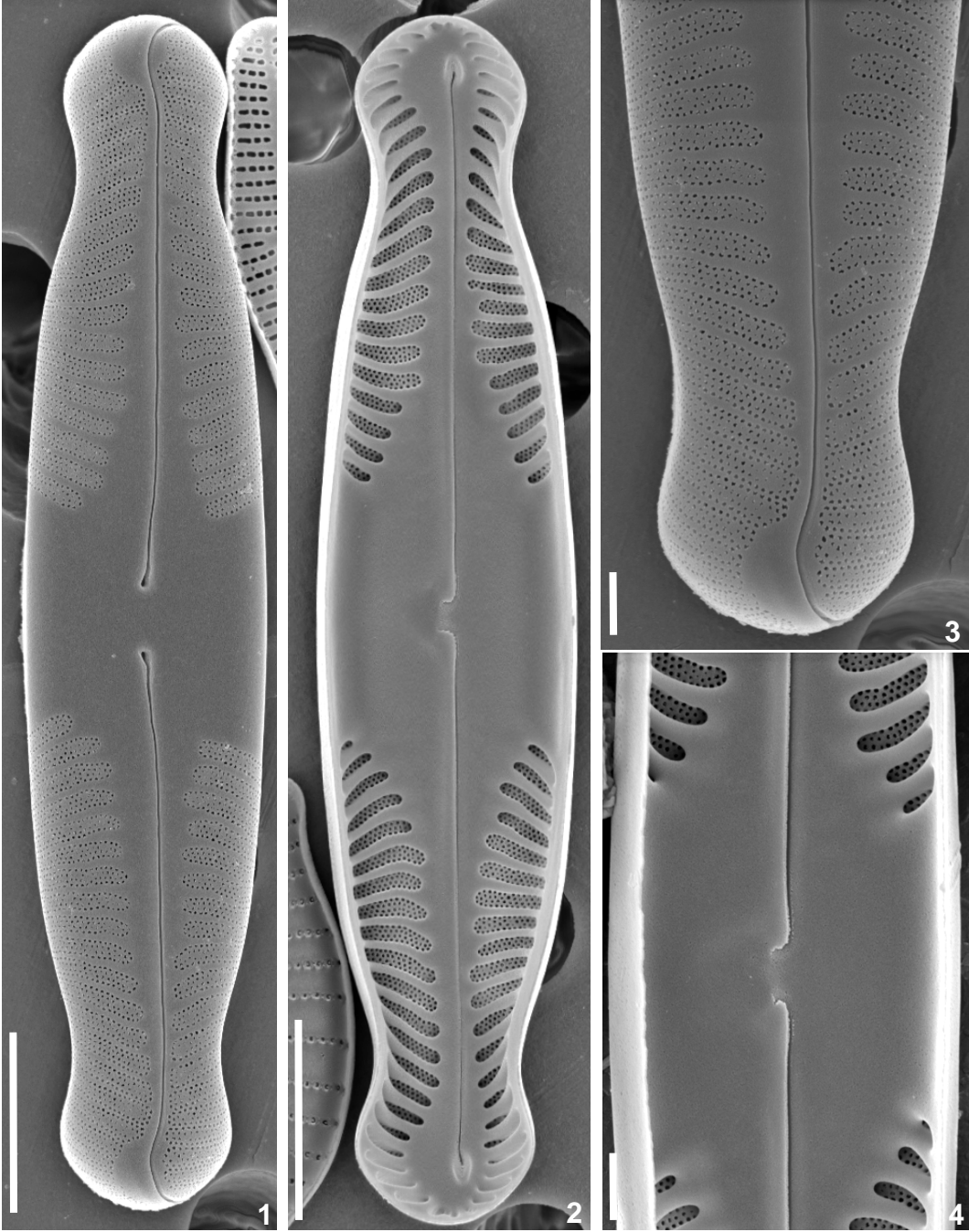
Fig. 1: External valve view.

Fig. 2: Internal valve view.

Fig. 3: Detail of the apical area in external view.

Fig. 4: Detail of the central area in internal view.

*Pinnularia*



## Plate 235

LM: x1500

**Figs 1-18:** *Pinnularia* sp.1, p. 40

**Figs 19-22:** *Pinnularia obscuriformis* Krammer, p. 40 [POBF]

**Figs 23, 24:** *Pinnularia parvulissima* Krammer, p. 40 [PPVS]

Scale bar = 10  $\mu$ m

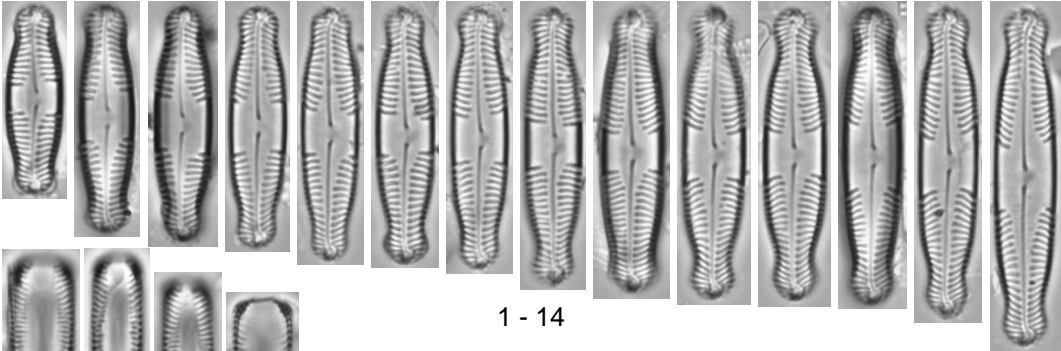
Figs 1-18: Porto de Vacas, Zêzere River (Tejo basin), 09-07-2006.

Figs 19-24: Prata Stream (Sado basin), 02-06-2006.

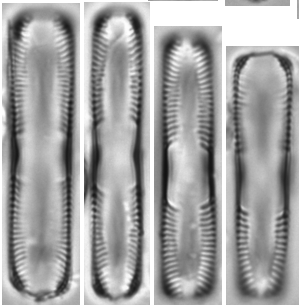
Figs 1-14, 19-24: Valve view.

Figs 15-18: Girdle view.

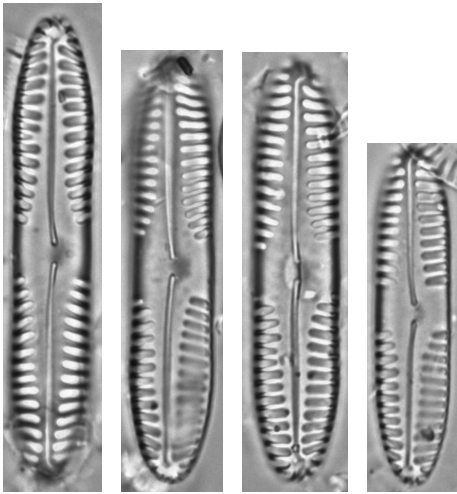
*Pinnularia*



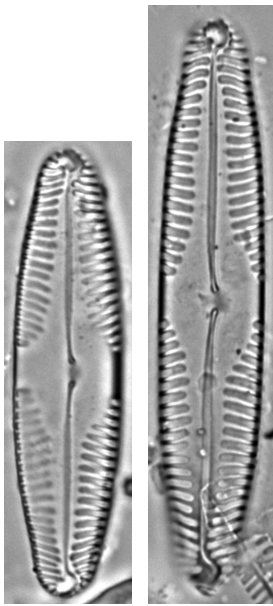
1 - 14



15 - 18



19 - 22



23 - 24

## Plate 236

**Figs 1, 2:** *Pinnularia* sp., p. 40

Scale bars = 5  $\mu\text{m}$

Figs 1, 2: Porto de Vacas, Zêzere River (Tejo basin), 09-07-2006.

Fig. 1: External valve view.

Fig. 2: Internal valve view.