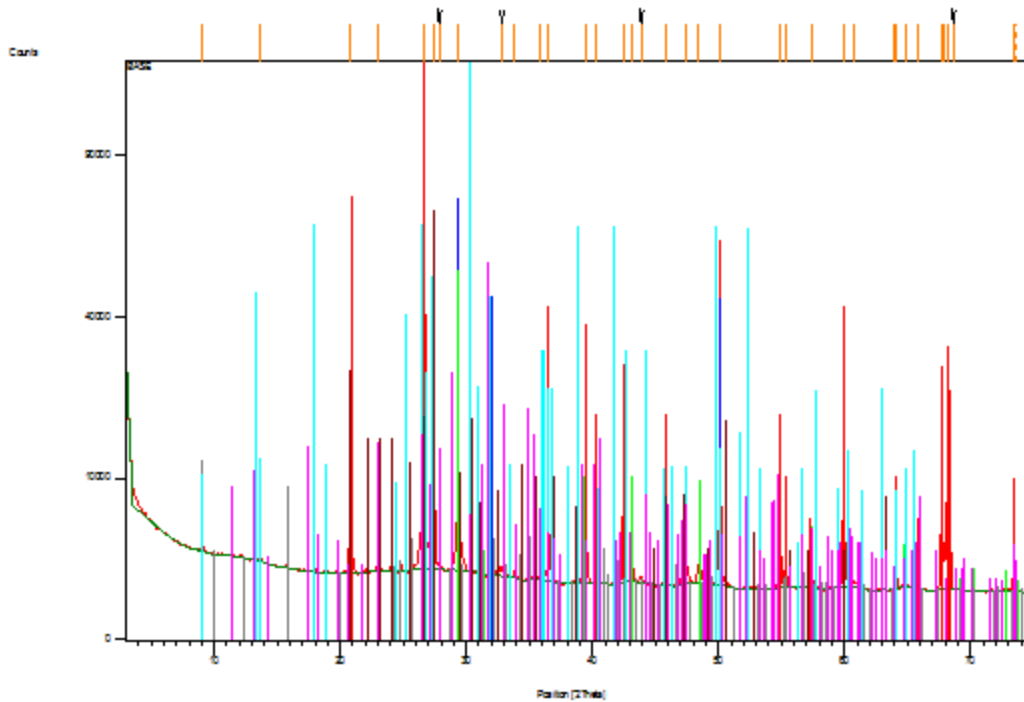


**ANEXO G**  
**DIFRAÇÃO DE RAIOS-X**

## Anchor Scan Parameters

Dataset Name:	BASE
File name:	F:\Betao_Marina Martins\BASE.raw
Sample Identification:	Commander Sample ID
Operator:	Lab Manager
Raw Data Origin:	BRUKER-binary V3 (.RAW)
Scan Axis:	Gonio
Start Position [°2Th.]:	3,0001
End Position [°2Th.]:	74,9501
Step Size [°2Th.]:	0,0500
Scan Step Time [s]:	191,7333
Scan Type:	Continuous
Offset [°2Th.]:	0,0000
Divergence Slit Type:	Fixed
Divergence Slit Size [°]:	1,0000
Specimen Length [mm]:	10,00
Receiving Slit Size [mm]:	0,1000
Measurement Temperature [°C]:	25,00
Anode Material:	Cu
K-Alpha1 [Å]:	1,54060
K-Alpha2 [Å]:	1,54443
K-Beta [Å]:	1,39225
K-A2 / K-A1 Ratio:	0,50000
Generator Settings:	40 mA, 40 kV
Diffractometer Type:	Unknown
Diffractometer Number:	0
Goniometer Radius [mm]:	280,00
Dist. Focus-Diverg. Slit [mm]:	91,00
Incident Beam Monochromator:	No
Spinning:	No

## Graphics



## Peak List

Pos. [°2Th.]	Height [cts]	FWHM [°2Th.]	d-spacing [Å]	Rel.Int. [%]
9,0574	1332,85	0,3337	9,76382	0,12
13,6330	1271,26	0,1818	6,49538	0,12
20,8447	23518,68	0,0835	4,26161	2,20
23,0269	1444,98	0,0561	3,86245	0,14
26,6131	165688,60	0,0977	3,34955	15,52
27,4472	5609,34	0,1413	3,24963	0,53
27,8184	1258,44	0,0100	3,20710	0,12
29,3671	10762,30	0,2094	3,04141	1,01
32,8060	463,61	0,0900	2,73003	0,04
33,8060	262,17	0,0900	2,65153	0,02
35,8560	370,04	0,0900	2,50449	0,03
36,5483	4447,44	0,0374	2,45863	0,42
39,4392	6498,24	0,0393	2,28482	0,61
40,2740	3310,71	0,0342	2,23936	0,31
42,4581	5900,17	0,0359	2,12909	0,55
43,2060	739,63	0,0900	2,09395	0,07
43,8560	283,28	0,0900	2,06441	0,03
45,8039	2820,88	0,0499	1,98105	0,26
47,4560	961,12	0,0900	1,91587	0,09
48,4560	958,05	0,0900	1,87865	0,09
50,1261	16942,95	0,0302	1,81990	1,59
50,1346	9743,59	0,0465	1,81961	0,91
54,8939	1088,51	0,0900	1,67258	0,10
55,3939	420,81	0,0900	1,65866	0,04
57,4439	453,73	0,0900	1,60425	0,04
59,9185	4750,99	0,1007	1,54378	0,44
59,9665	5236,41	0,0429	1,54266	0,49
60,7939	213,67	0,0900	1,52363	0,02
63,8939	174,46	0,0900	1,45698	0,02
64,1439	411,02	0,0900	1,45190	0,04
64,8439	214,22	0,0900	1,43791	0,02
65,8439	114,11	0,0900	1,41848	0,01
67,7557	6475,80	0,0349	1,38303	0,61
67,8782	3665,80	0,1102	1,38084	0,34
68,1383	8229,31	0,0100	1,37620	0,77
68,2383	1067658,00	0,0462	1,37443	100,00
68,6383	2118,26	0,5187	1,36739	0,20
73,4383	917,98	0,0900	1,28836	0,09
73,6383	642,95	0,0900	1,28854	0,06

## Pattern List

Visible	Ref.Code	Score	Compound Name	Displ. [°2Th]	Scale Fac.	Chem.
Formula						
*	00-046-1045	48	Quartz, syn	0,000	0,569	Si O2
*	00-033-0306	25	Calcium Silicate H..	0,000	0,090	Ca1.5 Si
O3.5 !x H..						
*	00-005-0586	18	Calcite, syn	0,000	0,062	Ca C O3
*	00-041-1451	0	Ettringite, syn	0,000	0,012	Ca6 Al2 ( S
O4 )3 ..						
*	00-001-0705	4	Microcline	0,000	0,085	K Al Si3 O8
*	00-029-0377	1	Foshagite, syn	0,000	0,318	Ca4 ( Si O3
)3 ( O..						
*	00-029-0332	1	Killalaite	0,000	0,066	Ca3.2 (
H0.6 Si2 O..						

## Document History

### Insert Measurement:

- File name = "BASE.raw"  
- Modification time = "14/04/2014 10:36:58"  
- Modification editor = "Jose Mirao"

### Interpolate Step Size:

- Step Size = "Derived"  
- Modification time = "01/02/2006"  
- Modification editor = "PANalytical"

### Determine Background:

- Correction method = "Automatic"  
- Bending factor = "3"  
- Use smoothed input data = "Yes"  
- Granularity = "20"  
- Add to net scan = "Nothing"  
- Modification time = "04/04/2014 17:36:21"  
- Modification editor = "Jose Mirao"

### Insert Peak:

- Peak position [ $^{\circ}2\theta$ ] = "13,6330"  
- Modification time = "14/04/2014 10:37:39"  
- Modification editor = "Jose Mirao"

### Insert Peak:

- Peak position [ $^{\circ}2\theta$ ] = "9,0574"  
- Modification time = "14/04/2014 10:37:41"  
- Modification editor = "Jose Mirao"

### Insert Peak:

- Peak position [ $^{\circ}2\theta$ ] = "20,8447"  
- Modification time = "14/04/2014 10:37:45"  
- Modification editor = "Jose Mirao"

### Insert Peak:

- Peak position [ $^{\circ}2\theta$ ] = "23,0269"  
- Modification time = "14/04/2014 10:37:47"  
- Modification editor = "Jose Mirao"

### Insert Peak:

- Peak position [ $^{\circ}2\theta$ ] = "26,6131"  
- Modification time = "14/04/2014 10:37:53"  
- Modification editor = "Jose Mirao"

### Insert Peak:

- Peak position [ $^{\circ}2\theta$ ] = "27,4472"  
- Modification time = "14/04/2014 10:37:54"  
- Modification editor = "Jose Mirao"

### Insert Peak:

- Peak position [ $^{\circ}2\theta$ ] = "27,8184"  
- Modification time = "14/04/2014 10:37:56"  
- Modification editor = "Jose Mirao"

### Insert Peak:

- Peak position [ $^{\circ}2\theta$ ] = "29,3671"  
- Modification time = "14/04/2014 10:37:59"  
- Modification editor = "Jose Mirao"

### Insert Peak:

- Peak position [ $^{\circ}2\theta$ ] = "32,8060"  
- Modification time = "14/04/2014 10:38:00"  
- Modification editor = "Jose Mirao"

### Insert Peak:

- Peak position [ $^{\circ}2\theta$ ] = "33,8060"  
- Modification time = "14/04/2014 10:38:02"  
- Modification editor = "Jose Mirao"

### Insert Peak:

- Peak position [ $^{\circ}2\theta$ ] = "35,8560"  
- Modification time = "14/04/2014 10:38:04"  
- Modification editor = "Jose Mirao"

### Insert Peak:

- Peak position [ $^{\circ}2\theta$ ] = "36,5483"  
- Modification time = "14/04/2014 10:38:05"  
- Modification editor = "Jose Mirao"

### Insert Peak:

- Peak position [ $^{\circ}2\theta$ ] = "39,4392"  
- Modification time = "14/04/2014 10:38:08"  
- Modification editor = "Jose Mirao"

### Insert Peak:

- Peak position [ $^{\circ}2\theta$ ] = "40,2740"  
- Modification time = "14/04/2014 10:38:09"

- Modification editor = "Jose Mirao"

### Insert Peak:

- Peak position [ $^{\circ}2\theta$ ] = "42,4581"  
- Modification time = "14/04/2014 10:38:14"  
- Modification editor = "Jose Mirao"

### Insert Peak:

- Peak position [ $^{\circ}2\theta$ ] = "43,2060"  
- Modification time = "14/04/2014 10:38:16"  
- Modification editor = "Jose Mirao"

### Insert Peak:

- Peak position [ $^{\circ}2\theta$ ] = "43,8560"  
- Modification time = "14/04/2014 10:38:17"  
- Modification editor = "Jose Mirao"

### Insert Peak:

- Peak position [ $^{\circ}2\theta$ ] = "45,8039"  
- Modification time = "14/04/2014 10:38:21"  
- Modification editor = "Jose Mirao"

### Insert Peak:

- Peak position [ $^{\circ}2\theta$ ] = "47,4560"  
- Modification time = "14/04/2014 10:38:22"  
- Modification editor = "Jose Mirao"

### Insert Peak:

- Peak position [ $^{\circ}2\theta$ ] = "48,4560"  
- Modification time = "14/04/2014 10:38:24"  
- Modification editor = "Jose Mirao"

### Insert Peak:

- Peak position [ $^{\circ}2\theta$ ] = "50,1261"  
- Modification time = "14/04/2014 10:38:33"  
- Modification editor = "Jose Mirao"

### Insert Peak:

- Peak position [ $^{\circ}2\theta$ ] = "50,1346"  
- Modification time = "14/04/2014 10:38:34"  
- Modification editor = "Jose Mirao"

### Insert Peak:

- Peak position [ $^{\circ}2\theta$ ] = "54,8939"  
- Modification time = "14/04/2014 10:38:37"  
- Modification editor = "Jose Mirao"

### Insert Peak:

- Peak position [ $^{\circ}2\theta$ ] = "55,3939"  
- Modification time = "14/04/2014 10:38:38"  
- Modification editor = "Jose Mirao"

### Insert Peak:

- Peak position [ $^{\circ}2\theta$ ] = "57,4439"  
- Modification time = "14/04/2014 10:38:39"  
- Modification editor = "Jose Mirao"

### Insert Peak:

- Peak position [ $^{\circ}2\theta$ ] = "59,9665"  
- Modification time = "14/04/2014 10:38:41"  
- Modification editor = "Jose Mirao"

### Insert Peak:

- Peak position [ $^{\circ}2\theta$ ] = "59,9185"  
- Modification time = "14/04/2014 10:38:43"  
- Modification editor = "Jose Mirao"

### Insert Peak:

- Peak position [ $^{\circ}2\theta$ ] = "60,7939"  
- Modification time = "14/04/2014 10:38:45"  
- Modification editor = "Jose Mirao"

### Insert Peak:

- Peak position [ $^{\circ}2\theta$ ] = "63,8939"  
- Modification time = "14/04/2014 10:38:47"  
- Modification editor = "Jose Mirao"

### Insert Peak:

- Peak position [ $^{\circ}2\theta$ ] = "64,1439"  
- Modification time = "14/04/2014 10:38:48"  
- Modification editor = "Jose Mirao"

### Insert Peak:

- Peak position [ $^{\circ}2\theta$ ] = "64,8439"  
- Modification time = "14/04/2014 10:38:50"  
- Modification editor = "Jose Mirao"

### Insert Peak:

- Peak position [ $^{\circ}2\theta$ ] = "65,8439"

- Modification time = "14/04/2014 10:38:51"  
- Modification editor = "Jose Mirao"

### Insert Peak:

- Peak position [ $^{\circ}2\theta$ ] = "67,7557"  
- Modification time = "14/04/2014 10:38:57"  
- Modification editor = "Jose Mirao"

### Insert Peak:

- Peak position [ $^{\circ}2\theta$ ] = "67,8782"  
- Modification time = "14/04/2014 10:39:00"  
- Modification editor = "Jose Mirao"

### Insert Peak:

- Peak position [ $^{\circ}2\theta$ ] = "68,2383"  
- Modification time = "14/04/2014 10:39:03"  
- Modification editor = "Jose Mirao"

### Insert Peak:

- Peak position [ $^{\circ}2\theta$ ] = "68,1383"  
- Modification time = "14/04/2014 10:39:04"  
- Modification editor = "Jose Mirao"

### Insert Peak:

- Peak position [ $^{\circ}2\theta$ ] = "68,6383"  
- Modification time = "14/04/2014 10:39:05"  
- Modification editor = "Jose Mirao"

### Insert Peak:

- Peak position [ $^{\circ}2\theta$ ] = "73,4383"  
- Modification time = "14/04/2014 10:39:10"  
- Modification editor = "Jose Mirao"

### Insert Peak:

- Peak position [ $^{\circ}2\theta$ ] = "73,6383"  
- Modification time = "14/04/2014 10:39:11"  
- Modification editor = "Jose Mirao"

### Search & Match:

- Data source = "Profile and peak list"  
- Restriction = "Restriction set"  
- Description = "Cement subfile only"  
- All of: elements = ""  
- At least one of: elements = ""  
- None of: elements = ""  
- Maximum no. of elements = "105"  
- Skip marked as deleted by ICDD = "No"  
- Skip marked as deleted by a user = "No"  
- Skip non ambient pressure = "No"  
- Skip non ambient temperature = "No"  
- Skip alternate patterns = "No"  
- Quality marks set = ""  
- Subfile combination = "Add"  
- Subfiles = "Mineral, Cement and Hydration Product"  
- Scoring schema = "Multi phase"  
- Auto residue = "Yes"  
- Match intensity = "Yes"  
- Demote unmatched strong = "Yes"  
- Allow pattern shift = "No"  
- Two theta shift = "0"  
- Identify = "No"  
- Modification time = "14/04/2014 10:39:32"  
- Modification editor = "Jose Mirao"

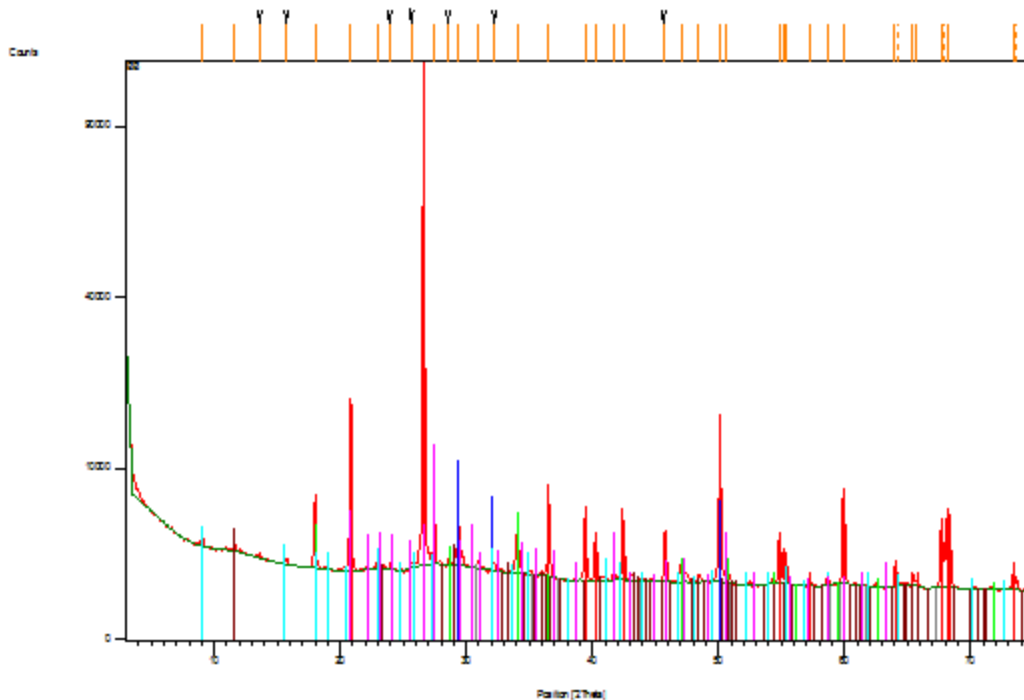
### Search & Match:

- Data source = "Profile and peak list"  
- Restriction = "Restriction set"  
- Description = "Cement subfile only"  
- All of: elements = ""  
- At least one of: elements = ""  
- None of: elements = ""  
- Maximum no. of elements = "105"  
- Skip marked as deleted by ICDD = "No"  
- Skip marked as deleted by a user = "No"  
- Skip non ambient pressure = "No"  
- Skip non ambient temperature = "No"  
- Skip alternate patterns = "No"  
- Quality marks set = ""  
- Subfiles = "Cement and Hydration Product"  
- Scoring schema = "Multi phase"  
- Auto residue = "Yes"  
- Match intensity = "Yes"  
- Demote unmatched strong = "Yes"  
- Allow pattern shift = "No"  
- Two theta shift = "0"  
- Identify = "No"  
- Modification time = "14/04/2014 15:24:42"  
- Modification editor = "Jose Mirao"

## Anchor Scan Parameters

Dataset Name:	BB
File name:	F:\Betao_Marina Martins\BB.raw
Sample Identification:	Commander Sample ID
Operator:	Lab Manager
Raw Data Origin:	BRUKER-binary V3 (.RAW)
Scan Axis:	Gonio
Start Position [°2Th.]:	3,0001
End Position [°2Th.]:	74,9501
Step Size [°2Th.]:	0,0500
Scan Step Time [s]:	191,7333
Scan Type:	Continuous
Offset [°2Th.]:	0,0000
Divergence Slit Type:	Fixed
Divergence Slit Size [°]:	1,0000
Specimen Length [mm]:	10,00
Receiving Slit Size [mm]:	0,1000
Measurement Temperature [°C]:	25,00
Anode Material:	Cu
K-Alpha1 [Å]:	1,54060
K-Alpha2 [Å]:	1,54443
K-Beta [Å]:	1,39225
K-A2 / K-A1 Ratio:	0,50000
Generator Settings:	40 mA, 40 kV
Diffractometer Type:	Unknown
Diffractometer Number:	0
Goniometer Radius [mm]:	280,00
Dist. Focus-Diverg. Slit [mm]:	91,00
Incident Beam Monochromator:	No
Spinning:	No

## Graphics



## Peak List

Pos. [°2Th.]	Height [cts]	FWHM [°2Th.]	d-spacing [Å]	Rel.Int. [%]
9,0012	1770,55	0,3867	9,82467	6,46
11,5732	1321,26	0,4877	7,64642	4,82
13,6136	909,22	0,4167	6,50461	3,32
15,7000	276,83	0,0900	5,64458	1,01
17,9939	7694,80	0,0478	4,92983	28,06
20,8281	22617,43	0,1044	4,26497	82,47
22,9500	376,81	0,0900	3,87522	1,37
23,9000	148,13	0,0900	3,72329	0,54
25,6500	294,27	0,0900	3,47310	1,07
27,4451	5338,17	0,0507	3,24987	19,46
28,5500	14,14	0,0900	3,12657	0,05
29,3890	3257,31	0,1515	3,03919	11,88
30,8500	199,52	0,0900	2,89851	0,73
32,2000	405,06	0,0900	2,78001	1,48
34,0405	3494,21	0,0635	2,63379	12,74
36,5405	7244,81	0,0311	2,45913	26,42
39,4408	4929,11	0,0357	2,28473	17,97
40,2863	2853,99	0,0462	2,23871	10,41
41,8000	270,55	0,0900	2,16107	0,99
42,4419	4883,36	0,0365	2,12986	17,81
45,6500	547,10	0,0900	1,98737	1,99
47,1500	966,96	0,0900	1,92759	3,53
48,4500	325,64	0,0900	1,87886	1,19
50,0778	27425,61	0,0100	1,82154	100,00
50,1591	11527,19	0,0379	1,81878	42,03
50,6778	637,71	0,0900	1,80138	2,33
54,8409	2507,41	0,0914	1,67407	9,14
54,8778	946,72	0,0900	1,67303	3,45
55,1778	378,47	0,0900	1,66464	1,38
55,4278	718,20	0,0900	1,65773	2,62
57,1778	179,68	0,0900	1,61108	0,66
58,6778	222,64	0,0900	1,57342	0,81
59,9009	6004,63	0,0100	1,54419	21,89
59,9872	4982,18	0,0517	1,54217	18,17
64,0009	795,30	0,0900	1,45360	2,90
64,1509	582,36	0,0900	1,45416	2,12
65,4009	474,22	0,0900	1,42583	1,73
65,7010	238,13	0,0900	1,42004	0,87
67,7381	4312,17	0,0453	1,38221	15,72
67,8956	2922,99	0,6272	1,37938	10,66
67,9179	4081,60	0,0116	1,38241	14,88
68,1678	6645,58	0,0403	1,37454	24,23
68,2509	4936,96	0,0100	1,37306	18,00
73,4009	1062,50	0,0900	1,28892	3,87
73,6509	550,88	0,0900	1,28835	2,01

## Pattern List

Visible	Ref.Code	Score	Compound Name	Displ. [°2Th]	Scale Fac.	Chem.
Formula						
*	00-046-1045	37	Quartz, syn	0,000	0,536	Si O2
*	00-033-0306	4	Calcium Silicate H..	0,000	0,080	Ca1.5 Si
O3.5 !x H..						
*	00-044-1481	13	Portlandite, syn	0,000	0,035	Ca ( O H )2
*	00-034-0517	6	Dolomite, ferroan	0,000	0,002	Ca ( Mg , Fe
) ( C..						
*	00-033-0311	4	Gypsum, syn	0,000	0,013	Ca S O4 !2 H2
O						
*	00-002-0059	Unmatch	Ettringite	0,000	0,013	Ca6 Al2 ( S
O4 )3 ..						
*	00-001-0705	7	Microcline	0,000	0,097	K Al Si3 O8

## Document History

### Insert Measurement:

- File name = BB.raw  
- Modification time = "14/04/2014 10:58:10"  
- Modification editor = "Jose Mirao"

### Interpolate Step Size:

- Step Size = "Derived"  
- Modification time = "01/02/2006"  
- Modification editor = "PANalytical"

### Determine Background:

- Correction method = "Automatic"  
- Bending factor = "3"  
- Use smoothed input data = "Yes"  
- Granularity = "20"  
- Add to net scan = "Nothing"  
- Modification time = "04/04/2014 17:36:21"  
- Modification editor = "Jose Mirao"

### Insert Peak:

- Peak position [°2Th.] = "9,0012"  
- Modification time = "14/04/2014 10:58:28"  
- Modification editor = "Jose Mirao"

### Insert Peak:

- Peak position [°2Th.] = "11,5732"  
- Modification time = "14/04/2014 10:58:30"  
- Modification editor = "Jose Mirao"

### Insert Peak:

- Peak position [°2Th.] = "13,6136"  
- Modification time = "14/04/2014 10:58:31"  
- Modification editor = "Jose Mirao"

### Insert Peak:

- Peak position [°2Th.] = "15,7000"  
- Modification time = "14/04/2014 10:58:33"  
- Modification editor = "Jose Mirao"

### Insert Peak:

- Peak position [°2Th.] = "17,9939"  
- Modification time = "14/04/2014 10:58:37"  
- Modification editor = "Jose Mirao"

### Insert Peak:

- Peak position [°2Th.] = "20,8281"  
- Modification time = "14/04/2014 10:58:38"  
- Modification editor = "Jose Mirao"

### Insert Peak:

- Peak position [°2Th.] = "22,9500"  
- Modification time = "14/04/2014 10:58:40"  
- Modification editor = "Jose Mirao"

### Insert Peak:

- Peak position [°2Th.] = "23,9000"  
- Modification time = "14/04/2014 10:58:41"  
- Modification editor = "Jose Mirao"

### Insert Peak:

- Peak position [°2Th.] = "25,6500"  
- Modification time = "14/04/2014 10:58:45"  
- Modification editor = "Jose Mirao"

### Insert Peak:

- Peak position [°2Th.] = "27,4451"  
- Modification time = "14/04/2014 10:58:52"  
- Modification editor = "Jose Mirao"

### Insert Peak:

- Peak position [°2Th.] = "28,5500"  
- Modification time = "14/04/2014 10:58:54"  
- Modification editor = "Jose Mirao"

### Insert Peak:

- Peak position [°2Th.] = "29,3890"  
- Modification time = "14/04/2014 10:58:55"  
- Modification editor = "Jose Mirao"

### Insert Peak:

- Peak position [°2Th.] = "30,8500"  
- Modification time = "14/04/2014 10:58:57"  
- Modification editor = "Jose Mirao"

### Insert Peak:

- Peak position [°2Th.] = "32,2000"  
- Modification time = "14/04/2014 10:58:59"  
- Modification editor = "Jose Mirao"

### Insert Peak:

- Peak position [°2Th.] = "34,0405"  
- Modification time = "14/04/2014 10:59:01"  
- Modification editor = "Jose Mirao"

### Insert Peak:

- Peak position [°2Th.] = "36,5405"  
- Modification time = "14/04/2014 10:59:04"  
- Modification editor = "Jose Mirao"

### Insert Peak:

- Peak position [°2Th.] = "39,4408"  
- Modification time = "14/04/2014 10:59:07"

- Modification editor = "Jose Mirao"

### Insert Peak:

- Peak position [°2Th.] = "40,2863"  
- Modification time = "14/04/2014 10:59:09"  
- Modification editor = "Jose Mirao"

### Insert Peak:

- Peak position [°2Th.] = "41,8000"  
- Modification time = "14/04/2014 10:59:11"  
- Modification editor = "Jose Mirao"

### Insert Peak:

- Peak position [°2Th.] = "42,4419"  
- Modification time = "14/04/2014 10:59:13"  
- Modification editor = "Jose Mirao"

### Insert Peak:

- Peak position [°2Th.] = "45,6500"  
- Modification time = "14/04/2014 10:59:15"  
- Modification editor = "Jose Mirao"

### Insert Peak:

- Peak position [°2Th.] = "47,1500"  
- Modification time = "14/04/2014 10:59:17"  
- Modification editor = "Jose Mirao"

### Insert Peak:

- Peak position [°2Th.] = "48,4500"  
- Modification time = "14/04/2014 10:59:19"  
- Modification editor = "Jose Mirao"

### Insert Peak:

- Peak position [°2Th.] = "50,1591"  
- Modification time = "14/04/2014 10:59:28"  
- Modification editor = "Jose Mirao"

### Insert Peak:

- Peak position [°2Th.] = "50,0778"  
- Modification time = "14/04/2014 10:59:30"  
- Modification editor = "Jose Mirao"

### Insert Peak:

- Peak position [°2Th.] = "50,6778"  
- Modification time = "14/04/2014 10:59:30"  
- Modification editor = "Jose Mirao"

### Insert Peak:

- Peak position [°2Th.] = "54,8778"  
- Modification time = "14/04/2014 10:59:33"  
- Modification editor = "Jose Mirao"

### Insert Peak:

- Peak position [°2Th.] = "54,8409"  
- Modification time = "14/04/2014 10:59:33"  
- Modification editor = "Jose Mirao"

### Insert Peak:

- Peak position [°2Th.] = "55,1778"  
- Modification time = "14/04/2014 10:59:35"  
- Modification editor = "Jose Mirao"

### Insert Peak:

- Peak position [°2Th.] = "55,4278"  
- Modification time = "14/04/2014 10:59:36"  
- Modification editor = "Jose Mirao"

### Insert Peak:

- Peak position [°2Th.] = "57,1778"  
- Modification time = "14/04/2014 10:59:37"  
- Modification editor = "Jose Mirao"

### Insert Peak:

- Peak position [°2Th.] = "58,6778"  
- Modification time = "14/04/2014 10:59:39"  
- Modification editor = "Jose Mirao"

### Insert Peak:

- Peak position [°2Th.] = "59,9872"  
- Modification time = "14/04/2014 10:59:44"  
- Modification editor = "Jose Mirao"

### Insert Peak:

- Peak position [°2Th.] = "59,9009"  
- Modification time = "14/04/2014 10:59:45"  
- Modification editor = "Jose Mirao"

### Insert Peak:

- Peak position [°2Th.] = "64,0009"  
- Modification time = "14/04/2014 10:59:48"  
- Modification editor = "Jose Mirao"

### Insert Peak:

- Peak position [°2Th.] = "64,1509"  
- Modification time = "14/04/2014 10:59:48"  
- Modification editor = "Jose Mirao"

### Insert Peak:

- Peak position [°2Th.] = "65,4009"  
- Modification time = "14/04/2014 10:59:50"  
- Modification editor = "Jose Mirao"

### Insert Peak:

- Peak position [°2Th.] = "65,7010"

- Modification time = "14/04/2014 10:59:51"  
- Modification editor = "Jose Mirao"

### Insert Peak:

- Peak position [°2Th.] = "67,7381"  
- Modification time = "14/04/2014 10:59:53"  
- Modification editor = "Jose Mirao"

### Insert Peak:

- Peak position [°2Th.] = "67,8956"  
- Modification time = "14/04/2014 10:59:53"  
- Modification editor = "Jose Mirao"

### Insert Peak:

- Peak position [°2Th.] = "67,9179"  
- Modification time = "14/04/2014 10:59:55"  
- Modification editor = "Jose Mirao"

### Insert Peak:

- Peak position [°2Th.] = "68,1678"  
- Modification time = "14/04/2014 10:59:56"  
- Modification editor = "Jose Mirao"

### Insert Peak:

- Peak position [°2Th.] = "68,2509"  
- Modification time = "14/04/2014 11:00:21"  
- Modification editor = "Jose Mirao"

### Insert Peak:

- Peak position [°2Th.] = "73,4009"  
- Modification time = "14/04/2014 11:00:24"  
- Modification editor = "Jose Mirao"

### Insert Peak:

- Peak position [°2Th.] = "73,6509"  
- Modification time = "14/04/2014 11:00:25"  
- Modification editor = "Jose Mirao"

### Search & Match:

- Data source = "Profile and peak list"  
- Restriction = "Restriction set"  
- Description = "Cement subfile only"  
- All of: elements = ""  
- At least one of: elements = ""  
- None of: elements = ""  
- Maximum no. of elements = "105"  
- Skip marked as deleted by ICDD = "No"  
- Skip marked as deleted by a user = "No"  
- Skip non ambient pressure = "No"  
- Skip non ambient temperature = "No"  
- Skip alternate patterns = "No"  
- Quality marks set = ""  
- Subfile combination = "Add"  
- Subfiles = "Mineral, Cement and Hydration Product"  
- Scoring schema = "Multi phase"  
- Auto residue = "Yes"  
- Match intensity = "Yes"  
- Demote unmatched strong = "Yes"  
- Allow pattern shift = "No"  
- Two theta shift = "0"  
- Identify = "No"  
- Modification time = "14/04/2014 11:00:47"  
- Modification editor = "Jose Mirao"

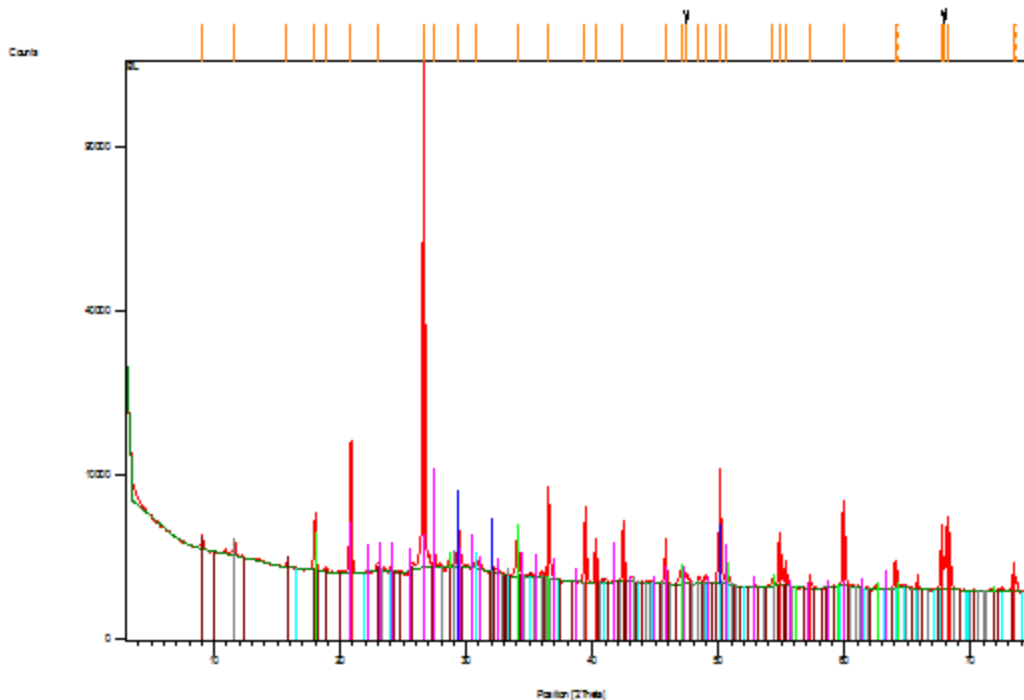
### Search & Match:

- Data source = "Profile and peak list"  
- Restriction = "Restriction set"  
- Description = "Cement subfile only"  
- All of: elements = ""  
- At least one of: elements = ""  
- None of: elements = ""  
- Maximum no. of elements = "105"  
- Skip marked as deleted by ICDD = "No"  
- Skip marked as deleted by a user = "No"  
- Skip non ambient pressure = "No"  
- Skip non ambient temperature = "No"  
- Skip alternate patterns = "No"  
- Quality marks set = ""  
- Subfiles = "Cement and Hydration Product"  
- Scoring schema = "Multi phase"  
- Auto residue = "Yes"  
- Match intensity = "Yes"  
- Demote unmatched strong = "Yes"  
- Allow pattern shift = "No"  
- Two theta shift = "0"  
- Identify = "No"  
- Modification time = "14/04/2014 15:46:21"  
- Modification editor = "Jose Mirao"

## Anchor Scan Parameters

Dataset Name:	BL
File name:	F:\Betao_Marina Martins\BL.raw
Sample Identification:	Commander Sample ID
Operator:	Lab Manager
Raw Data Origin:	BRUKER-binary V3 (.RAW)
Scan Axis:	Gonio
Start Position [ $^{\circ}2\theta$ .]:	3,0001
End Position [ $^{\circ}2\theta$ .]:	74,9501
Step Size [ $^{\circ}2\theta$ .]:	0,0500
Scan Step Time [s]:	191,7333
Scan Type:	Continuous
Offset [ $^{\circ}2\theta$ .]:	0,0000
Divergence Slit Type:	Fixed
Divergence Slit Size [ $^{\circ}$ ]:	1,0000
Specimen Length [mm]:	10,00
Receiving Slit Size [mm]:	0,1000
Measurement Temperature [ $^{\circ}C$ ]:	25,00
Anode Material:	Cu
K-Alpha1 [ $\text{\AA}$ ]:	1,54060
K-Alpha2 [ $\text{\AA}$ ]:	1,54443
K-Beta [ $\text{\AA}$ ]:	1,39225
K-A2 / K-A1 Ratio:	0,50000
Generator Settings:	40 mA, 40 kV
Diffractometer Type:	Unknown
Diffractometer Number:	0
Goniometer Radius [mm]:	280,00
Dist. Focus-Diverg. Slit [mm]:	91,00
Incident Beam Monochromator:	No
Spinning:	No

## Graphics





## Peak List

Pos. [°2Th.]	Height [cts]	FWHM [°2Th.]	d-spacing [Å]	Rel.Int. [%]
9,0492	1762,97	0,7112	9,77261	1,10
11,5971	1756,48	0,3143	7,63068	1,10
15,7001	193,38	0,0900	5,64454	0,12
17,9715	6101,91	0,0510	4,93594	3,82
18,8785	237,61	0,0900	4,70079	0,15
20,7906	15653,34	0,0424	4,27258	9,80
22,9285	408,86	0,0900	3,87881	0,26
26,5845	159768,60	0,0957	3,35310	100,00
27,3992	2353,33	0,0353	3,25522	1,47
29,3690	4058,00	0,1910	3,04122	2,54
30,7554	1149,51	0,0936	2,90721	0,72
34,0376	2925,75	0,0442	2,63402	1,83
36,5026	9982,06	0,0298	2,46160	6,25
39,4211	5137,16	0,0354	2,28583	3,22
40,2676	2700,70	0,0485	2,23970	1,69
42,4098	4487,55	0,0319	2,13140	2,81
45,7576	2257,39	0,0492	1,98295	1,41
47,0682	930,74	0,0900	1,93075	0,58
47,4682	473,89	0,0900	1,91541	0,30
48,4182	277,71	0,0900	1,88002	0,17
48,9682	419,69	0,0900	1,86019	0,26
50,1182	13071,22	0,0100	1,82017	8,18
50,1439	12983,68	0,0314	1,81929	8,13
50,6682	439,47	0,0900	1,80169	0,28
54,2682	282,42	0,0900	1,69038	0,18
54,8768	2817,01	0,0415	1,67306	1,76
54,8902	4344,20	0,0308	1,67268	2,72
55,3182	790,38	0,0900	1,66075	0,49
57,3182	207,08	0,0900	1,60747	0,13
59,9390	5055,51	0,0854	1,54330	3,16
59,9940	8146,29	0,0333	1,54201	5,10
64,0182	1228,69	0,0900	1,45325	0,77
64,1682	835,53	0,0900	1,45381	0,52
67,7916	2662,41	0,0651	1,38125	1,67
67,9037	2329,93	0,0482	1,37924	1,46
67,9182	3535,97	0,0100	1,37898	2,21
68,1376	4316,15	0,2194	1,37507	2,70
73,4182	1371,06	0,0900	1,28866	0,86
73,6182	610,52	0,0900	1,28885	0,38

## Pattern List

Visible	Ref.Code	Score	Compound Name	Displ. [°2Th]	Scale Fac.	Chem.
Formula						
*	00-046-1045	37	Quartz, syn	0,000	0,537	Si O2
*	00-033-0306	14	Calcium Silicate H..	0,000	0,051	Ca1.5 Si
O3.5 !x H..						
*	00-044-1481	7	Portlandite, syn	0,000	0,028	Ca ( O H )2
*	00-033-0311	4	Gypsum, syn	0,000	0,010	Ca S O4 !2 H2
O						
*	00-041-1451	2	Ettringite, syn	0,000	0,008	Ca6 Al2 ( S
O4 )3 ..						
*	00-041-0586	7	Ankerite	0,000	0,008	Ca ( Fe +2 ,
Mg ) ..						
*	00-001-0705	5	Microcline	0,000	0,072	K Al Si3 O8

## Document History

### Insert Measurement:

- File name = BL.raw
- Modification time = "14/04/2014 15:08:55"
- Modification editor = "Jose Mirao"

### Interpolate Step Size:

- Step Size = "Derived"
- Modification time = "01/02/2006"
- Modification editor = "PANalytical"

### Determine Background:

- Correction method = "Automatic"
- Bending factor = "3"
- Use smoothed input data = "Yes"
- Granularity = "20"
- Add to net scan = "Nothing"
- Modification time = "04/04/2014 17:36:21"
- Modification editor = "Jose Mirao"

### Insert Peak:

- Peak position [ $^{\circ}2\text{Th}$ ] = "9,0492"
- Modification time = "14/04/2014 15:09:25"
- Modification editor = "Jose Mirao"

### Insert Peak:

- Peak position [ $^{\circ}2\text{Th}$ ] = "11,5971"
- Modification time = "14/04/2014 15:09:29"
- Modification editor = "Jose Mirao"

### Insert Peak:

- Peak position [ $^{\circ}2\text{Th}$ ] = "15,7001"
- Modification time = "14/04/2014 15:09:32"
- Modification editor = "Jose Mirao"

### Insert Peak:

- Peak position [ $^{\circ}2\text{Th}$ ] = "17,9715"
- Modification time = "14/04/2014 15:09:42"
- Modification editor = "Jose Mirao"

### Insert Peak:

- Peak position [ $^{\circ}2\text{Th}$ ] = "18,8785"
- Modification time = "14/04/2014 15:09:43"
- Modification editor = "Jose Mirao"

### Insert Peak:

- Peak position [ $^{\circ}2\text{Th}$ ] = "20,7906"
- Modification time = "14/04/2014 15:09:54"
- Modification editor = "Jose Mirao"

### Insert Peak:

- Peak position [ $^{\circ}2\text{Th}$ ] = "22,9285"
- Modification time = "14/04/2014 15:09:56"
- Modification editor = "Jose Mirao"

### Insert Peak:

- Peak position [ $^{\circ}2\text{Th}$ ] = "26,5845"
- Modification time = "14/04/2014 15:09:58"
- Modification editor = "Jose Mirao"

### Insert Peak:

- Peak position [ $^{\circ}2\text{Th}$ ] = "27,3992"
- Modification time = "14/04/2014 15:10:04"
- Modification editor = "Jose Mirao"

### Insert Peak:

- Peak position [ $^{\circ}2\text{Th}$ ] = "29,3690"
- Modification time = "14/04/2014 15:10:06"
- Modification editor = "Jose Mirao"

### Insert Peak:

- Peak position [ $^{\circ}2\text{Th}$ ] = "30,7554"
- Modification time = "14/04/2014 15:10:08"
- Modification editor = "Jose Mirao"

### Insert Peak:

- Peak position [ $^{\circ}2\text{Th}$ ] = "34,0376"
- Modification time = "14/04/2014 15:10:10"
- Modification editor = "Jose Mirao"

### Insert Peak:

- Peak position [ $^{\circ}2\text{Th}$ ] = "36,5026"
- Modification time = "14/04/2014 15:10:12"
- Modification editor = "Jose Mirao"

### Insert Peak:

- Peak position [ $^{\circ}2\text{Th}$ ] = "39,4211"
- Modification time = "14/04/2014 15:10:14"
- Modification editor = "Jose Mirao"

### Insert Peak:

- Peak position [ $^{\circ}2\text{Th}$ ] = "40,2676"
- Modification time = "14/04/2014 15:10:16"
- Modification editor = "Jose Mirao"

### Insert Peak:

- Peak position [ $^{\circ}2\text{Th}$ ] = "42,4098"
- Modification time = "14/04/2014 15:10:18"
- Modification editor = "Jose Mirao"

### Insert Peak:

- Peak position [ $^{\circ}2\text{Th}$ ] = "45,7576"
- Modification time = "14/04/2014 15:10:20"
- Modification editor = "Jose Mirao"

### Insert Peak:

- Peak position [ $^{\circ}2\text{Th}$ ] = "47,0682"
- Modification time = "14/04/2014 15:10:33"
- Modification editor = "Jose Mirao"

### Insert Peak:

- Peak position [ $^{\circ}2\text{Th}$ ] = "47,4682"
- Modification time = "14/04/2014 15:10:34"
- Modification editor = "Jose Mirao"

### Insert Peak:

- Peak position [ $^{\circ}2\text{Th}$ ] = "48,4182"
- Modification time = "14/04/2014 15:10:35"
- Modification editor = "Jose Mirao"

### Insert Peak:

- Peak position [ $^{\circ}2\text{Th}$ ] = "48,9682"
- Modification time = "14/04/2014 15:10:36"
- Modification editor = "Jose Mirao"

### Insert Peak:

- Peak position [ $^{\circ}2\text{Th}$ ] = "50,1439"
- Modification time = "14/04/2014 15:10:44"
- Modification editor = "Jose Mirao"

### Insert Peak:

- Peak position [ $^{\circ}2\text{Th}$ ] = "50,1182"
- Modification time = "14/04/2014 15:10:45"
- Modification editor = "Jose Mirao"

### Insert Peak:

- Peak position [ $^{\circ}2\text{Th}$ ] = "50,6682"
- Modification time = "14/04/2014 15:10:48"
- Modification editor = "Jose Mirao"

### Insert Peak:

- Peak position [ $^{\circ}2\text{Th}$ ] = "54,2682"
- Modification time = "14/04/2014 15:10:49"
- Modification editor = "Jose Mirao"

### Insert Peak:

- Peak position [ $^{\circ}2\text{Th}$ ] = "54,8902"
- Modification time = "14/04/2014 15:10:50"
- Modification editor = "Jose Mirao"

### Insert Peak:

- Peak position [ $^{\circ}2\text{Th}$ ] = "54,8768"
- Modification time = "14/04/2014 15:10:52"
- Modification editor = "Jose Mirao"

### Insert Peak:

- Peak position [ $^{\circ}2\text{Th}$ ] = "55,3182"
- Modification time = "14/04/2014 15:10:53"
- Modification editor = "Jose Mirao"

### Insert Peak:

- Peak position [ $^{\circ}2\text{Th}$ ] = "57,3182"
- Modification time = "14/04/2014 15:10:55"
- Modification editor = "Jose Mirao"

### Insert Peak:

- Peak position [ $^{\circ}2\text{Th}$ ] = "59,9940"
- Modification time = "14/04/2014 15:10:56"
- Modification editor = "Jose Mirao"

### Insert Peak:

- Peak position [ $^{\circ}2\text{Th}$ ] = "59,9390"
- Modification time = "14/04/2014 15:10:57"
- Modification editor = "Jose Mirao"

### Insert Peak:

- Peak position [ $^{\circ}2\text{Th}$ ] = "64,0182"
- Modification time = "14/04/2014 15:10:59"
- Modification editor = "Jose Mirao"

### Insert Peak:

- Peak position [ $^{\circ}2\text{Th}$ ] = "64,1682"
- Modification time = "14/04/2014 15:11:00"
- Modification editor = "Jose Mirao"

### Insert Peak:

- Peak position [ $^{\circ}2\text{Th}$ ] = "67,7916"
- Modification time = "14/04/2014 15:11:01"
- Modification editor = "Jose Mirao"

### Insert Peak:

- Peak position [ $^{\circ}2\text{Th}$ ] = "67,9037"
- Modification time = "14/04/2014 15:11:02"
- Modification editor = "Jose Mirao"

### Insert Peak:

- Peak position [ $^{\circ}2\text{Th}$ ] = "67,9182"
- Modification time = "14/04/2014 15:11:03"
- Modification editor = "Jose Mirao"

### Insert Peak:

- Peak position [ $^{\circ}2\text{Th}$ ] = "68,1376"
- Modification time = "14/04/2014 15:11:04"
- Modification editor = "Jose Mirao"

### Insert Peak:

- Peak position [ $^{\circ}2\text{Th}$ ] = "73,4182"
- Modification time = "14/04/2014 15:11:06"
- Modification editor = "Jose Mirao"

### Insert Peak:

- Peak position [ $^{\circ}2\text{Th}$ ] = "73,6182"
- Modification time = "14/04/2014 15:11:07"
- Modification editor = "Jose Mirao"

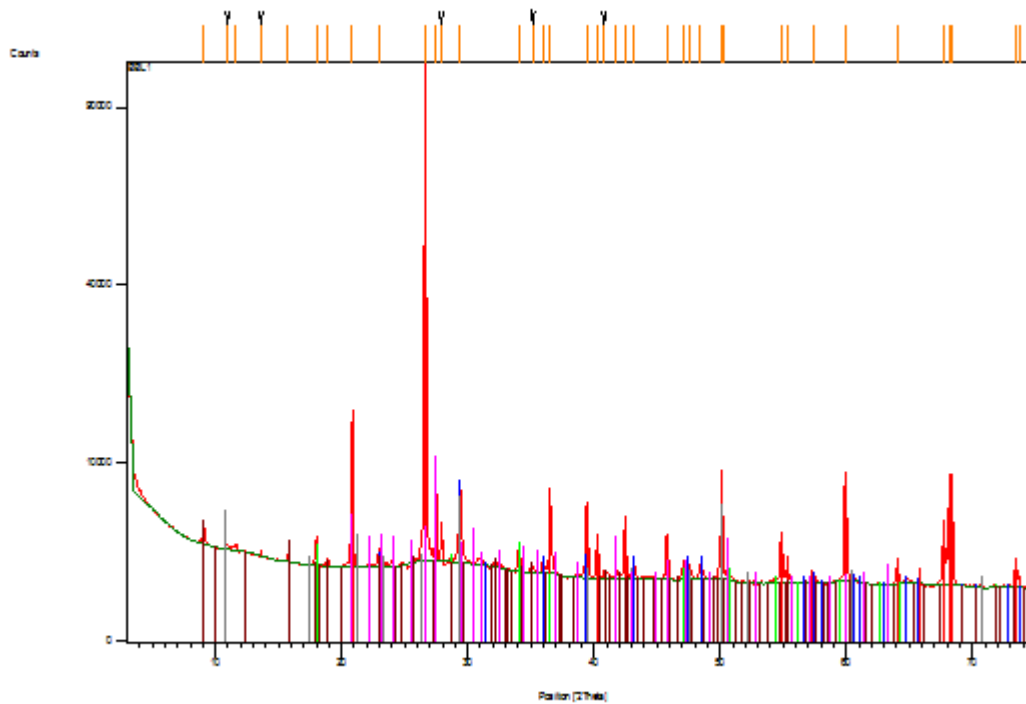
### Search & Match:

- Data source = "Profile and peak list"
- Restriction = "Restriction set"
- Description = "Cement subfile only"
- All of: elements = ""
- At least one of: elements = ""
- None of: elements = ""
- Maximum no. of elements = "105"
- Skip marked as deleted by ICDD = "No"
- Skip marked as deleted by a user = "No"
- Skip non ambient pressure = "No"
- Skip non ambient temperature = "No"
- Skip alternate patterns = "No"
- Quality marks set = ""
- Subfiles = "Cement and Hydration Product"
- Scoring schema = "Multi phase"
- Auto residue = "Yes"
- Match intensity = "Yes"
- Demote unmatched strong = "Yes"
- Allow pattern shift = "No"
- Two theta shift = "0"
- Identify = "No"
- Modification time = "14/04/2014 15:02:26"
- Modification editor = "Jose Mirao"

## Anchor Scan Parameters

Dataset Name:	BBL1
File name:	F:\Betao_Marina Martins\BBL1.raw
Sample Identification:	Commander Sample ID
Operator:	Lab Manager
Raw Data Origin:	BRUKER-binary V3 (.RAW)
Scan Axis:	Gonio
Start Position [°2Th.]:	3,0001
End Position [°2Th.]:	74,9501
Step Size [°2Th.]:	0,0500
Scan Step Time [s]:	191,7333
Scan Type:	Continuous
Offset [°2Th.]:	0,0000
Divergence Slit Type:	Fixed
Divergence Slit Size [°]:	1,0000
Specimen Length [mm]:	10,00
Receiving Slit Size [mm]:	0,1000
Measurement Temperature [°C]:	25,00
Anode Material:	Cu
K-Alpha1 [Å]:	1,54060
K-Alpha2 [Å]:	1,54443
K-Beta [Å]:	1,39225
K-A2 / K-A1 Ratio:	0,50000
Generator Settings:	40 mA, 40 kV
Diffractometer Type:	Unknown
Diffractometer Number:	0
Goniometer Radius [mm]:	280,00
Dist. Focus-Diverg. Slit [mm]:	91,00
Incident Beam Monochromator:	No
Spinning:	No

## Graphics



## Peak List

Pos. [°2Th.]	Height [cts]	FWHM [°2Th.]	d-spacing [Å]	Rel.Int. [%]
9,0515	2422,28	0,2933	9,77015	1,78
10,9537	1170,06	0,7396	8,07739	0,86
11,5832	1242,99	0,4993	7,63982	0,91
13,5876	1071,43	0,0585	6,51700	0,79
15,7547	1147,64	0,0556	5,62510	0,84
17,9957	2759,51	0,0362	4,92934	2,03
18,8537	347,53	0,0900	4,70690	0,26
20,8406	20332,51	0,0851	4,26243	14,94
22,9884	1537,10	0,0555	3,86883	1,13
26,6128	136075,70	0,1003	3,34959	100,00
27,4588	10107,66	0,0451	3,24829	7,43
27,9029	3778,02	0,0251	3,19759	2,78
29,3938	7747,21	0,2024	3,03871	5,69
34,0831	2284,27	0,0386	2,63060	1,68
35,1707	233,41	0,0900	2,55171	0,17
35,9707	536,98	0,0900	2,49677	0,39
36,5495	8213,37	0,0252	2,45855	6,04
39,4516	6222,42	0,0283	2,28413	4,57
40,3264	2025,82	0,0855	2,23658	1,49
40,7707	188,68	0,0900	2,21322	0,14
41,7207	361,61	0,0900	2,16500	0,27
42,4638	3747,45	0,0373	2,12881	2,75
43,1207	560,03	0,0900	2,09790	0,41
45,7983	3559,70	0,0350	1,98128	2,62
47,1207	809,23	0,0900	1,92872	0,59
47,5207	633,69	0,0900	1,91341	0,47
48,3207	211,37	0,0900	1,88359	0,16
50,1684	5601,26	0,0462	1,81846	4,12
50,2148	5365,91	0,0512	1,81689	3,94
54,8929	3774,17	0,0333	1,67261	2,77
55,3207	535,89	0,0900	1,66068	0,39
57,3707	369,02	0,0900	1,60612	0,27
59,9707	22238,49	0,0100	1,54256	16,34
59,9991	10524,64	0,0311	1,54190	7,73
64,1207	223,64	0,0900	1,45237	0,16
67,7944	3866,15	0,0449	1,38234	2,84
68,2440	10576,92	0,0602	1,37432	7,77
68,2581	7392,67	0,0509	1,37407	5,43
68,3707	64622,64	0,0100	1,37209	47,49
73,3707	534,88	0,0900	1,29044	0,39
73,7207	214,59	0,0900	1,28518	0,16

## Pattern List

Visible	Ref.Code	Score	Compound Name	Displ. [°2Th]	Scale Fac.
Chem. Formula					
* O2	00-046-1045	49	Quartz, syn	0,000	0,588 Si
C O3	00-005-0586	20	Calcite, syn	0,000	0,058 Ca
( O H )2	00-044-1481	10	Portlandite, syn	0,000	0,016 Ca
* H4 Si2 O7	00-012-0739	7	Calcium Hydrogen S..	0,000	0,046 Ca
* Al2 ( S O4 )3 ..	00-041-1451	3	Ettringite, syn	0,000	0,017 Ca6
S O4 !2 H2 O	00-021-0816	3	Gypsum	0,000	0,018 Ca
* Al Si3 O8	00-001-0705	4	Microcline	0,000	0,084 K

## Document History

### Insert Measurement:

- File name = BBL1.raw
- Modification time = "14/04/2014 11:09:29"
- Modification editor = "Jose Mirao"

### Interpolate Step Size:

- Step Size = "Derived"
- Modification time = "01/02/2006"
- Modification editor = "PANalytical"

### Determine Background:

- Correction method = "Automatic"
- Bending factor = "3"
- Use smoothed input data = "Yes"
- Granularity = "20"
- Add to net scan = "Nothing"
- Modification time = "04/04/2014 17:36:21"
- Modification editor = "Jose Mirao"

### Insert Peak:

- Peak position [°2Th.] = "9,0515"
- Modification time = "14/04/2014 11:09:55"
- Modification editor = "Jose Mirao"

### Insert Peak:

- Peak position [°2Th.] = "10,9537"
- Modification time = "14/04/2014 11:09:56"
- Modification editor = "Jose Mirao"

### Insert Peak:

- Peak position [°2Th.] = "11,5832"
- Modification time = "14/04/2014 11:09:57"
- Modification editor = "Jose Mirao"

### Insert Peak:

- Peak position [°2Th.] = "15,7547"
- Modification time = "14/04/2014 11:09:59"
- Modification editor = "Jose Mirao"

### Insert Peak:

- Peak position [°2Th.] = "13,5876"
- Modification time = "14/04/2014 11:10:01"
- Modification editor = "Jose Mirao"

### Insert Peak:

- Peak position [°2Th.] = "17,9957"
- Modification time = "14/04/2014 11:10:04"
- Modification editor = "Jose Mirao"

### Insert Peak:

- Peak position [°2Th.] = "18,8537"
- Modification time = "14/04/2014 11:10:05"
- Modification editor = "Jose Mirao"

### Insert Peak:

- Peak position [°2Th.] = "20,8406"
- Modification time = "14/04/2014 11:10:08"
- Modification editor = "Jose Mirao"

### Insert Peak:

- Peak position [°2Th.] = "22,9884"
- Modification time = "14/04/2014 11:10:11"
- Modification editor = "Jose Mirao"

### Insert Peak:

- Peak position [°2Th.] = "26,6128"
- Modification time = "14/04/2014 11:10:13"
- Modification editor = "Jose Mirao"

### Insert Peak:

- Peak position [°2Th.] = "27,4588"
- Modification time = "14/04/2014 11:10:16"
- Modification editor = "Jose Mirao"

### Insert Peak:

- Peak position [°2Th.] = "27,9029"
- Modification time = "14/04/2014 11:10:18"
- Modification editor = "Jose Mirao"

### Insert Peak:

- Peak position [°2Th.] = "29,3938"
- Modification time = "14/04/2014 11:10:19"
- Modification editor = "Jose Mirao"

### Insert Peak:

- Peak position [°2Th.] = "34,0831"
- Modification time = "14/04/2014 11:10:28"
- Modification editor = "Jose Mirao"

### Insert Peak:

- Peak position [°2Th.] = "35,1707"
- Modification time = "14/04/2014 11:10:29"
- Modification editor = "Jose Mirao"

### Insert Peak:

- Peak position [°2Th.] = "35,9707"
- Modification time = "14/04/2014 11:10:31"
- Modification editor = "Jose Mirao"

### Insert Peak:

- Peak position [°2Th.] = "36,5495"
- Modification time = "14/04/2014 11:10:32"
- Modification editor = "Jose Mirao"

### Insert Peak:

- Peak position [°2Th.] = "39,4516"
- Modification time = "14/04/2014 11:10:34"
- Modification editor = "Jose Mirao"

### Insert Peak:

- Peak position [°2Th.] = "40,3264"
- Modification time = "14/04/2014 11:10:38"
- Modification editor = "Jose Mirao"

### Insert Peak:

- Peak position [°2Th.] = "40,7707"
- Modification time = "14/04/2014 11:10:40"
- Modification editor = "Jose Mirao"

### Insert Peak:

- Peak position [°2Th.] = "41,7207"
- Modification time = "14/04/2014 11:10:41"
- Modification editor = "Jose Mirao"

### Insert Peak:

- Peak position [°2Th.] = "42,4638"
- Modification time = "14/04/2014 11:10:42"
- Modification editor = "Jose Mirao"

### Insert Peak:

- Peak position [°2Th.] = "43,1207"
- Modification time = "14/04/2014 11:10:44"
- Modification editor = "Jose Mirao"

### Insert Peak:

- Peak position [°2Th.] = "45,7983"
- Modification time = "14/04/2014 11:10:47"
- Modification editor = "Jose Mirao"

### Insert Peak:

- Peak position [°2Th.] = "47,1207"
- Modification time = "14/04/2014 11:10:48"
- Modification editor = "Jose Mirao"

### Insert Peak:

- Peak position [°2Th.] = "47,5207"
- Modification time = "14/04/2014 11:10:49"
- Modification editor = "Jose Mirao"

### Insert Peak:

- Peak position [°2Th.] = "48,3207"
- Modification time = "14/04/2014 11:10:50"
- Modification editor = "Jose Mirao"

### Insert Peak:

- Peak position [°2Th.] = "50,2148"
- Modification time = "14/04/2014 11:10:53"
- Modification editor = "Jose Mirao"

### Insert Peak:

- Peak position [°2Th.] = "50,1684"
- Modification time = "14/04/2014 11:10:55"
- Modification editor = "Jose Mirao"

### Insert Peak:

- Peak position [°2Th.] = "54,8929"
- Modification time = "14/04/2014 11:10:56"
- Modification editor = "Jose Mirao"

### Insert Peak:

- Peak position [°2Th.] = "55,3207"
- Modification time = "14/04/2014 11:10:58"
- Modification editor = "Jose Mirao"

### Insert Peak:

- Peak position [°2Th.] = "57,3707"
- Modification time = "14/04/2014 11:10:59"
- Modification editor = "Jose Mirao"

### Insert Peak:

- Peak position [°2Th.] = "59,9991"
- Modification time = "14/04/2014 11:11:00"

- Modification editor = "Jose Mirao"

### Insert Peak:

- Peak position [°2Th.] = "59,9707"
- Modification time = "14/04/2014 11:11:02"
- Modification editor = "Jose Mirao"

### Insert Peak:

- Peak position [°2Th.] = "64,1207"
- Modification time = "14/04/2014 11:11:03"
- Modification editor = "Jose Mirao"

### Insert Peak:

- Peak position [°2Th.] = "67,7944"
- Modification time = "14/04/2014 11:11:07"
- Modification editor = "Jose Mirao"

### Insert Peak:

- Peak position [°2Th.] = "68,2581"
- Modification time = "14/04/2014 11:11:08"
- Modification editor = "Jose Mirao"

### Insert Peak:

- Peak position [°2Th.] = "68,2440"
- Modification time = "14/04/2014 11:11:09"
- Modification editor = "Jose Mirao"

### Insert Peak:

- Peak position [°2Th.] = "68,3707"
- Modification time = "14/04/2014 11:11:10"
- Modification editor = "Jose Mirao"

### Insert Peak:

- Peak position [°2Th.] = "73,3707"
- Modification time = "14/04/2014 11:11:16"
- Modification editor = "Jose Mirao"

### Insert Peak:

- Peak position [°2Th.] = "73,7207"
- Modification time = "14/04/2014 11:11:17"
- Modification editor = "Jose Mirao"

### Search & Match:

- Data source = "Profile and peak list"
- Restriction = "Restriction set"
- Description = "Cement subfile only"
- All of: elements = ""
- At least one of: elements = ""
- None of: elements = ""
- Maximum no. of elements = "105"
- Skip marked as deleted by ICDD = "No"
- Skip marked as deleted by a user = "No"
- Skip non ambient pressure = "No"
- Skip non ambient temperature = "No"
- Skip alternate patterns = "No"
- Quality marks set = ""
- Subfiles = "Cement and Hydration Product"
- Scoring schema = "Multi phase"
- Auto residue = "Yes"
- Match intensity = "Yes"
- Demote unmatched strong = "Yes"
- Allow pattern shift = "No"
- Two theta shift = "0"
- Identify = "No"
- Modification time = "14/04/2014 11:11:32"
- Modification editor = "Jose Mirao"

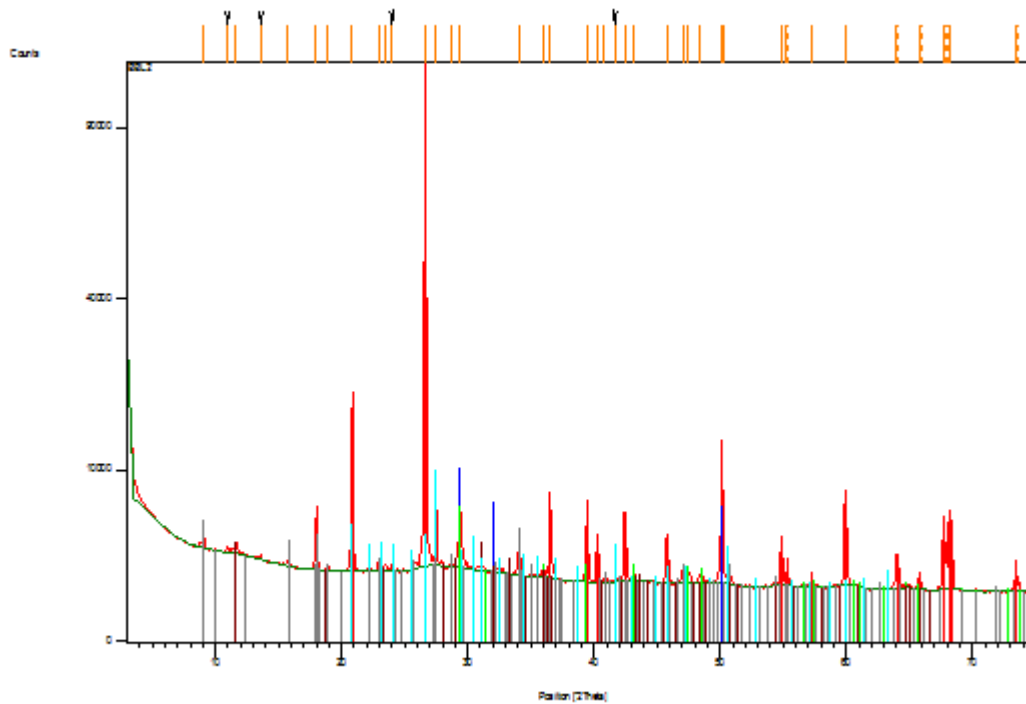
### Search & Match:

- Data source = "Profile and peak list"
- Restriction = "Restriction set"
- Description = "Cement subfile only"
- All of: elements = ""
- At least one of: elements = ""
- None of: elements = ""
- Maximum no. of elements = "105"
- Skip marked as deleted by ICDD = "No"
- Skip marked as deleted by a user = "No"
- Skip non ambient pressure = "No"
- Skip non ambient temperature = "No"
- Skip alternate patterns = "No"
- Quality marks set = ""
- Subfiles = "Cement and Hydration Product"
- Scoring schema = "Multi phase"
- Auto residue = "Yes"
- Match intensity = "Yes"
- Demote unmatched strong = "Yes"
- Allow pattern shift = "No"
- Two theta shift = "0"
- Identify = "No"
- Modification time = "14/04/2014 15:46:21"
- Modification editor = "Jose Mirao"

## Anchor Scan Parameters

Dataset Name:	BBL2
File name:	F:\Betao_Marina Martins\BBL2.raw
Sample Identification:	Commander Sample ID
Operator:	Lab Manager
Raw Data Origin:	BRUKER-binary V3 (.RAW)
Scan Axis:	Gonio
Start Position [°2Th.]:	3,0001
End Position [°2Th.]:	74,9501
Step Size [°2Th.]:	0,0500
Scan Step Time [s]:	191,7333
Scan Type:	Continuous
Offset [°2Th.]:	0,0000
Divergence Slit Type:	Fixed
Divergence Slit Size [°]:	1,0000
Specimen Length [mm]:	10,00
Receiving Slit Size [mm]:	0,1000
Measurement Temperature [°C]:	25,00
Anode Material:	Cu
K-Alpha1 [Å]:	1,54060
K-Alpha2 [Å]:	1,54443
K-Beta [Å]:	1,39225
K-A2 / K-A1 Ratio:	0,50000
Generator Settings:	40 mA, 40 kV
Diffractometer Type:	Unknown
Diffractometer Number:	0
Goniometer Radius [mm]:	280,00
Dist. Focus-Diverg. Slit [mm]:	91,00
Incident Beam Monochromator:	No
Spinning:	No

## Graphics



## Peak List

Pos. [°2Th.]	Height [cts]	FWHM [°2Th.]	d-spacing [Å]	Rel.Int. [%]
9,0094	1737,41	0,4719	9,81575	1,18
10,9564	1168,44	0,7192	8,07543	0,79
11,6104	1524,33	0,4209	7,62200	1,04
13,5719	1093,69	0,1480	6,52448	0,74
15,7489	1017,40	0,0794	5,62717	0,69
17,9764	6343,52	0,0333	4,93459	4,31
18,8262	253,24	0,0900	4,71373	0,17
20,8192	25972,25	0,0798	4,26678	17,65
22,9715	1204,74	0,2063	3,87165	0,82
23,4762	363,77	0,0900	3,78954	0,25
23,9762	337,74	0,0900	3,71163	0,23
26,5876	147159,20	0,0950	3,35271	100,00
27,4611	6589,86	0,1008	3,24802	4,48
28,6575	1046,56	0,1162	3,11509	0,71
29,3626	5812,14	0,2070	3,04187	3,95
34,0325	2332,44	0,0360	2,63439	1,58
36,0262	325,76	0,0900	2,49305	0,22
36,5201	6739,72	0,0324	2,46046	4,58
39,4502	4608,32	0,0340	2,28421	3,13
40,2814	3653,61	0,0336	2,23897	2,48
40,7073	35,50	0,0900	2,21652	0,02
41,6573	54,56	0,0900	2,16815	0,04
42,4541	5780,54	0,0319	2,12928	3,93
43,1573	472,64	0,0900	2,09620	0,32
45,7929	3950,64	0,0349	1,98150	2,68
47,0573	702,68	0,0900	1,93117	0,48
47,5073	498,62	0,0900	1,91392	0,34
48,4573	396,93	0,0900	1,87860	0,27
50,1712	8961,41	0,1568	1,81837	6,09
50,2128	8799,55	0,0441	1,81696	5,98
54,9276	2974,55	0,0617	1,67163	2,02
54,9628	1142,82	0,0900	1,67065	0,78
55,2628	518,16	0,0900	1,66091	0,35
55,3628	289,66	0,0900	1,66227	0,20
57,2628	237,90	0,0900	1,60756	0,16
59,9692	5769,92	0,0388	1,54132	3,92
60,0128	4947,95	0,0542	1,54030	3,36
63,9628	1200,98	0,0900	1,45437	0,82
64,1128	724,26	0,0900	1,45494	0,49
65,7628	496,13	0,0900	1,41886	0,34
65,9628	285,81	0,0900	1,41855	0,19
67,7837	6001,59	0,0365	1,38139	4,08
67,9226	3392,82	0,0435	1,38233	2,31
67,9628	5383,24	0,0100	1,38161	3,66
68,1857	4778,67	0,0991	1,37422	3,25
73,4628	870,11	0,0900	1,28799	0,59
73,6628	577,92	0,0900	1,28818	0,39

## Pattern List

Visible	Ref.Code	Score	Compound Name	Displ. [°2Th]	Scale Fac.
Chem. Formula					
*	00-046-1045	47	Quartz, syn	0,000	0,614 Si O2
*	00-033-0306	16	Calcium Silicate H..	0,000	0,074 Ca1.5 Si O3.5
!x H..					
*	00-005-0586	17	Calcite, syn	0,000	0,039 Ca C O3
*	00-044-1481	8	Portlandite, syn	0,000	0,026 Ca ( O H )2
*	00-021-0816	4	Gypsum	0,000	0,015 Ca S O4 !2 H2 O
*	00-001-0705	4	Microcline	0,000	0,070 K Al Si3 O8
*	00-041-1451	3	Ettringite, syn	0,000	0,018 Ca6 Al2 ( S O4
)3 ..					

## Document History

### Insert Measurement:

- File name = BBL2.raw  
- Modification time = "14/04/2014 14:59:30"  
- Modification editor = "Jose Mirao"

### Interpolate Step Size:

- Step Size = "Derived"  
- Modification time = "01/02/2006"  
- Modification editor = "PANalytical"

### Determine Background:

- Correction method = "Automatic"  
- Bending factor = "3"  
- Use smoothed input data = "Yes"  
- Granularity = "20"  
- Add to net scan = "Nothing"  
- Modification time = "04/04/2014 17:36:21"  
- Modification editor = "Jose Mirao"

### Insert Peak:

- Peak position [°2Th.] = "9,0094"  
- Modification time = "14/04/2014 14:59:45"  
- Modification editor = "Jose Mirao"

### Insert Peak:

- Peak position [°2Th.] = "10,9564"  
- Modification time = "14/04/2014 14:59:47"  
- Modification editor = "Jose Mirao"

### Insert Peak:

- Peak position [°2Th.] = "11,6104"  
- Modification time = "14/04/2014 14:59:48"  
- Modification editor = "Jose Mirao"

### Insert Peak:

- Peak position [°2Th.] = "13,5719"  
- Modification time = "14/04/2014 14:59:52"  
- Modification editor = "Jose Mirao"

### Insert Peak:

- Peak position [°2Th.] = "15,7489"  
- Modification time = "14/04/2014 14:59:57"  
- Modification editor = "Jose Mirao"

### Insert Peak:

- Peak position [°2Th.] = "17,9764"  
- Modification time = "14/04/2014 15:00:06"  
- Modification editor = "Jose Mirao"

### Insert Peak:

- Peak position [°2Th.] = "18,8262"  
- Modification time = "14/04/2014 15:00:07"  
- Modification editor = "Jose Mirao"

### Insert Peak:

- Peak position [°2Th.] = "20,8192"  
- Modification time = "14/04/2014 15:00:10"  
- Modification editor = "Jose Mirao"

### Insert Peak:

- Peak position [°2Th.] = "22,9715"  
- Modification time = "14/04/2014 15:00:12"  
- Modification editor = "Jose Mirao"

### Insert Peak:

- Peak position [°2Th.] = "23,4762"  
- Modification time = "14/04/2014 15:00:13"  
- Modification editor = "Jose Mirao"

### Insert Peak:

- Peak position [°2Th.] = "23,9762"  
- Modification time = "14/04/2014 15:00:15"  
- Modification editor = "Jose Mirao"

### Insert Peak:

- Peak position [°2Th.] = "26,5876"  
- Modification time = "14/04/2014 15:00:18"  
- Modification editor = "Jose Mirao"

### Insert Peak:

- Peak position [°2Th.] = "27,4611"  
- Modification time = "14/04/2014 15:00:22"  
- Modification editor = "Jose Mirao"

### Insert Peak:

- Peak position [°2Th.] = "28,6575"  
- Modification time = "14/04/2014 15:00:24"  
- Modification editor = "Jose Mirao"

### Insert Peak:

- Peak position [°2Th.] = "29,3626"  
- Modification time = "14/04/2014 15:00:26"  
- Modification editor = "Jose Mirao"

### Insert Peak:

- Peak position [°2Th.] = "34,0325"  
- Modification time = "14/04/2014 15:00:27"  
- Modification editor = "Jose Mirao"

### Insert Peak:

- Peak position [°2Th.] = "36,0262"  
- Modification time = "14/04/2014 15:00:29"  
- Modification editor = "Jose Mirao"

### Insert Peak:

- Peak position [°2Th.] = "36,5201"  
- Modification time = "14/04/2014 15:00:31"  
- Modification editor = "Jose Mirao"

### Insert Peak:

- Peak position [°2Th.] = "39,4502"  
- Modification time = "14/04/2014 15:00:39"  
- Modification editor = "Jose Mirao"

### Insert Peak:

- Peak position [°2Th.] = "40,2814"  
- Modification time = "14/04/2014 15:00:42"  
- Modification editor = "Jose Mirao"

### Insert Peak:

- Peak position [°2Th.] = "40,7073"  
- Modification time = "14/04/2014 15:00:42"  
- Modification editor = "Jose Mirao"

### Insert Peak:

- Peak position [°2Th.] = "41,6573"  
- Modification time = "14/04/2014 15:00:44"  
- Modification editor = "Jose Mirao"

### Insert Peak:

- Peak position [°2Th.] = "42,4541"  
- Modification time = "14/04/2014 15:00:50"  
- Modification editor = "Jose Mirao"

### Insert Peak:

- Peak position [°2Th.] = "43,1573"  
- Modification time = "14/04/2014 15:00:53"  
- Modification editor = "Jose Mirao"

### Insert Peak:

- Peak position [°2Th.] = "45,7929"  
- Modification time = "14/04/2014 15:00:56"  
- Modification editor = "Jose Mirao"

### Insert Peak:

- Peak position [°2Th.] = "47,0573"  
- Modification time = "14/04/2014 15:00:57"  
- Modification editor = "Jose Mirao"

### Insert Peak:

- Peak position [°2Th.] = "47,5073"  
- Modification time = "14/04/2014 15:01:06"  
- Modification editor = "Jose Mirao"

### Insert Peak:

- Peak position [°2Th.] = "48,4573"  
- Modification time = "14/04/2014 15:01:07"  
- Modification editor = "Jose Mirao"

### Insert Peak:

- Peak position [°2Th.] = "50,2128"  
- Modification time = "14/04/2014 15:01:15"  
- Modification editor = "Jose Mirao"

### Insert Peak:

- Peak position [°2Th.] = "50,1712"  
- Modification time = "14/04/2014 15:01:17"  
- Modification editor = "Jose Mirao"

### Insert Peak:

- Peak position [°2Th.] = "54,9276"  
- Modification time = "14/04/2014 15:01:18"  
- Modification editor = "Jose Mirao"

### Insert Peak:

- Peak position [°2Th.] = "54,9628"  
- Modification time = "14/04/2014 15:01:19"  
- Modification editor = "Jose Mirao"

### Insert Peak:

- Peak position [°2Th.] = "55,2628"  
- Modification time = "14/04/2014 15:01:21"  
- Modification editor = "Jose Mirao"

### Insert Peak:

- Peak position [°2Th.] = "55,3628"

- Modification time = "14/04/2014 15:01:23"  
- Modification editor = "Jose Mirao"

### Insert Peak:

- Peak position [°2Th.] = "57,2628"  
- Modification time = "14/04/2014 15:01:24"  
- Modification editor = "Jose Mirao"

### Insert Peak:

- Peak position [°2Th.] = "60,0128"  
- Modification time = "14/04/2014 15:01:26"  
- Modification editor = "Jose Mirao"

### Insert Peak:

- Peak position [°2Th.] = "59,9692"  
- Modification time = "14/04/2014 15:01:31"  
- Modification editor = "Jose Mirao"

### Insert Peak:

- Peak position [°2Th.] = "63,9628"  
- Modification time = "14/04/2014 15:01:34"  
- Modification editor = "Jose Mirao"

### Insert Peak:

- Peak position [°2Th.] = "64,1128"  
- Modification time = "14/04/2014 15:01:35"  
- Modification editor = "Jose Mirao"

### Insert Peak:

- Peak position [°2Th.] = "65,7628"  
- Modification time = "14/04/2014 15:01:36"  
- Modification editor = "Jose Mirao"

### Insert Peak:

- Peak position [°2Th.] = "65,9628"  
- Modification time = "14/04/2014 15:01:38"  
- Modification editor = "Jose Mirao"

### Insert Peak:

- Peak position [°2Th.] = "67,7837"  
- Modification time = "14/04/2014 15:01:41"  
- Modification editor = "Jose Mirao"

### Insert Peak:

- Peak position [°2Th.] = "67,9226"  
- Modification time = "14/04/2014 15:01:43"  
- Modification editor = "Jose Mirao"

### Insert Peak:

- Peak position [°2Th.] = "67,9628"  
- Modification time = "14/04/2014 15:01:44"  
- Modification editor = "Jose Mirao"

### Insert Peak:

- Peak position [°2Th.] = "68,1857"  
- Modification time = "14/04/2014 15:01:45"  
- Modification editor = "Jose Mirao"

### Insert Peak:

- Peak position [°2Th.] = "73,4628"  
- Modification time = "14/04/2014 15:01:47"  
- Modification editor = "Jose Mirao"

### Insert Peak:

- Peak position [°2Th.] = "73,6628"  
- Modification time = "14/04/2014 15:01:48"  
- Modification editor = "Jose Mirao"

### Search & Match:

- Data source = "Profile and peak list"  
- Restriction = "Restriction set"  
- Description = "Cement subfile only"  
- All of: elements = ""  
- At least one of: elements = ""  
- None of: elements = ""  
- Maximum no. of elements = "105"  
- Skip marked as deleted by ICDD = "No"  
- Skip marked as deleted by a user = "No"  
- Skip non ambient pressure = "No"  
- Skip non ambient temperature = "No"  
- Skip alternate patterns = "No"  
- Quality marks set = ""  
- Subfiles = "Cement and Hydration Product"  
- Scoring schema = "Multi phase"  
- Auto residue = "Yes"  
- Match intensity = "Yes"  
- Demote unmatched strong = "Yes"  
- Allow pattern shift = "No"  
- Two theta shift = "0"  
- Identify = "No"  
- Modification time = "14/04/2014 15:02:26"  
- Modification editor = "Jose Mirao"