



Agriculture in an Urbanizing Society, 14-17 Sept. 2015, Rome

**Countryside consumption as a new driver
of food production
– transition in land use strategies spreading
in Southern Europe**

**Teresa Pinto Correia, Cecília Fonseca, Mara Almeida
ICAAM / University of Évora
PORTUGAL**

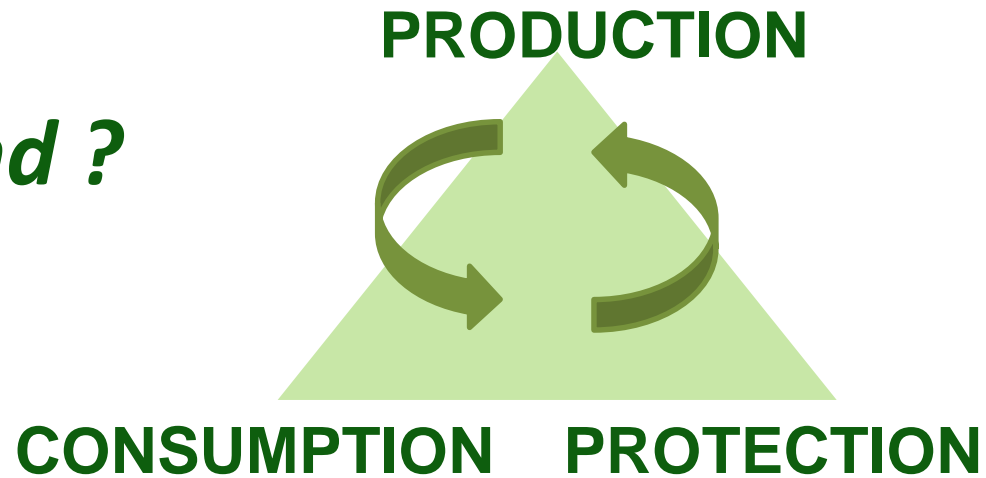


icaam

INSTITUTO DE CIÊNCIAS AGRÁRIAS E AMBIENTAIS MEDITERRÂNICAS

Differentiation in space trajectories: the changing rural in Europe today

*what is driving
the use of the rural land ?*

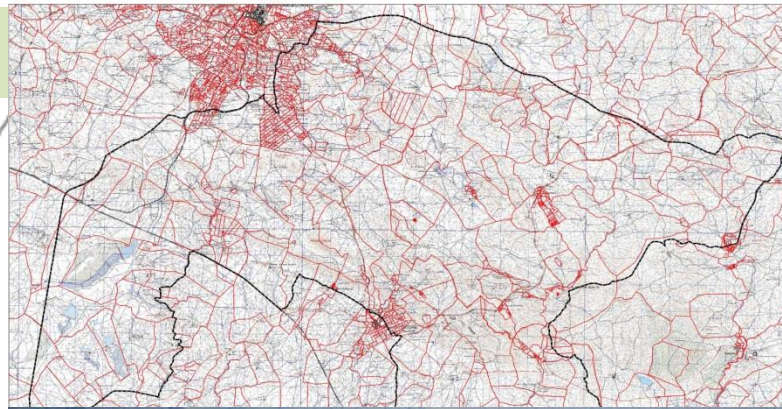
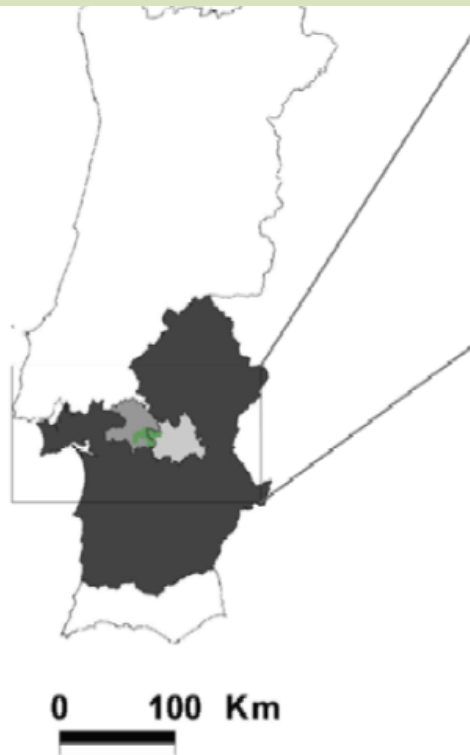


➡ relative weigh of production, consumption and protection are being altered, and often re-arranged again >> contradictions and complex dynamics



new management models

Small-scale mosaic



Montemor-o-Novo

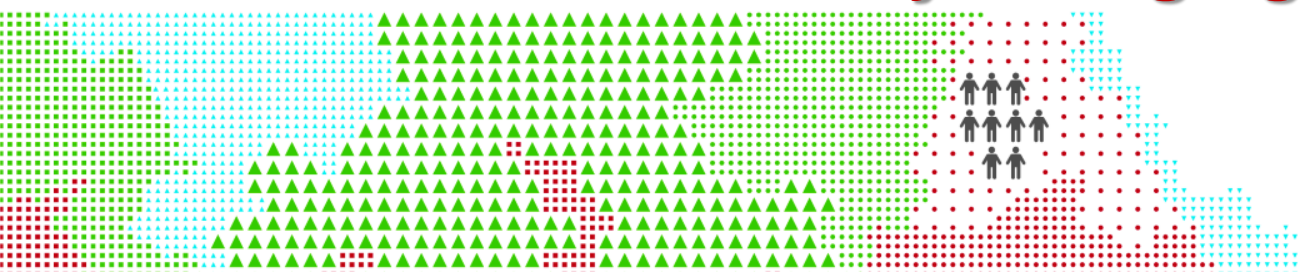
100 km east of Lisbon
and 25 km from Évora
Natura 2000 site



New functions in old patterns: from production to consumption countryside



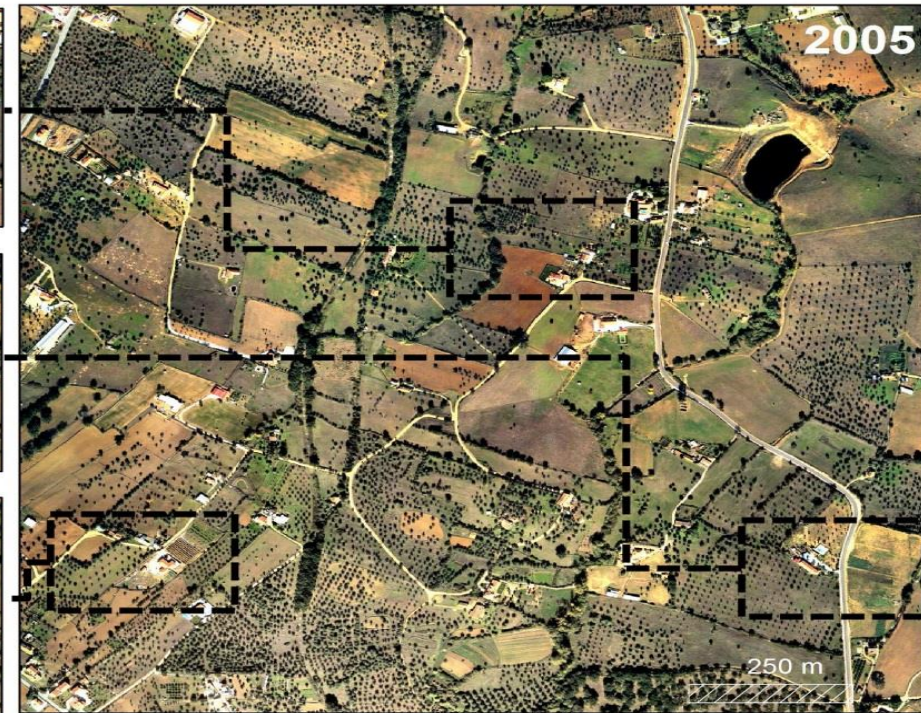
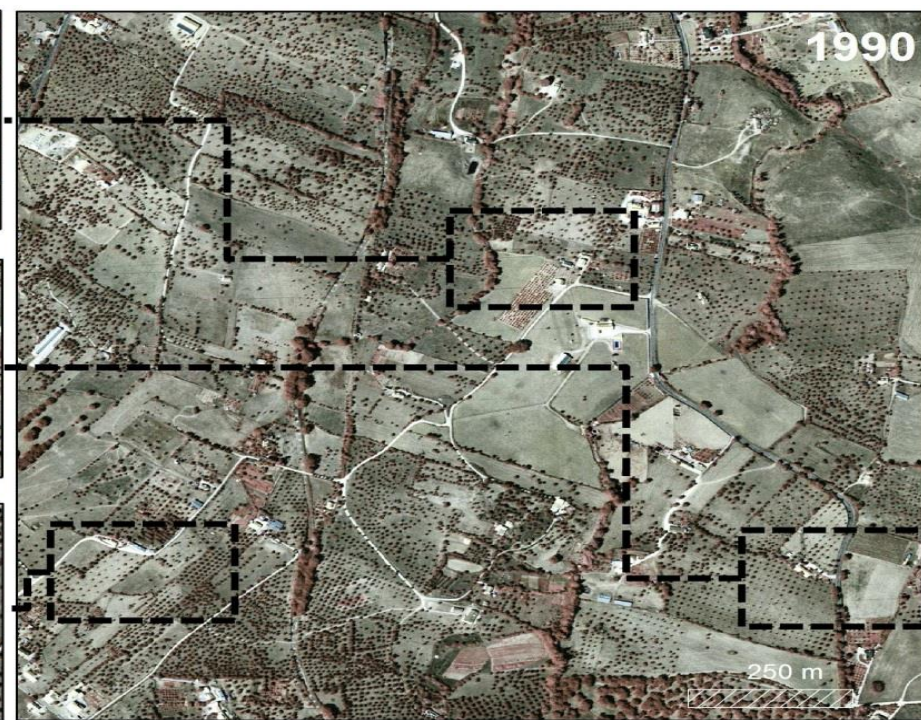
»» but how much is really changing ?



Ulam
INSTITUTO DE CIÊNCIAS AGRÁRIAS E AMBIENTAIS MEDITERRÂNICAS

Contrary to what is described in literature, the landscape pattern is kept

more and larger buildings
BUT
the same land cover, linear elements, composition, configuration

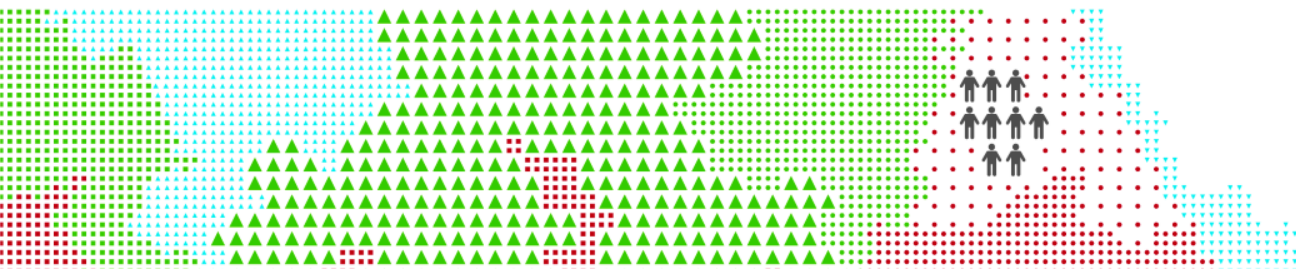


Consumption as a driver of farm and farmland management

..grounded in a quest for rural lifestyle, healthy food, leisure,
which may or may not be closely linked to production
↪ *the lifestyle farming strategy*: the income generated from
agriculture is not the main motivations for the choices taken

- new types of actors and interactions
- new approach to farming and farm system
- new land management paradigms

↓
» » a niche ?



UHAM
INSTITUTO DE CIÊNCIAS AGRÁRIAS E AMBIENTAIS MEDITERRÂNICAS

1st »»» What defines this niche ?

**Mixed profiles: new comers + locals +
returnees (local family roots)**

Reasons for coming:

Tranquility + landscape + healthy food and life

Reasons for staying:

Social network + agriculture + landscape

Multiple interactions in different spheres:

for managing commons

and for traditional knowledge and practices

for cultural interests, for recreation

for producer-consumer relation: short supply chains

for information: urban connections

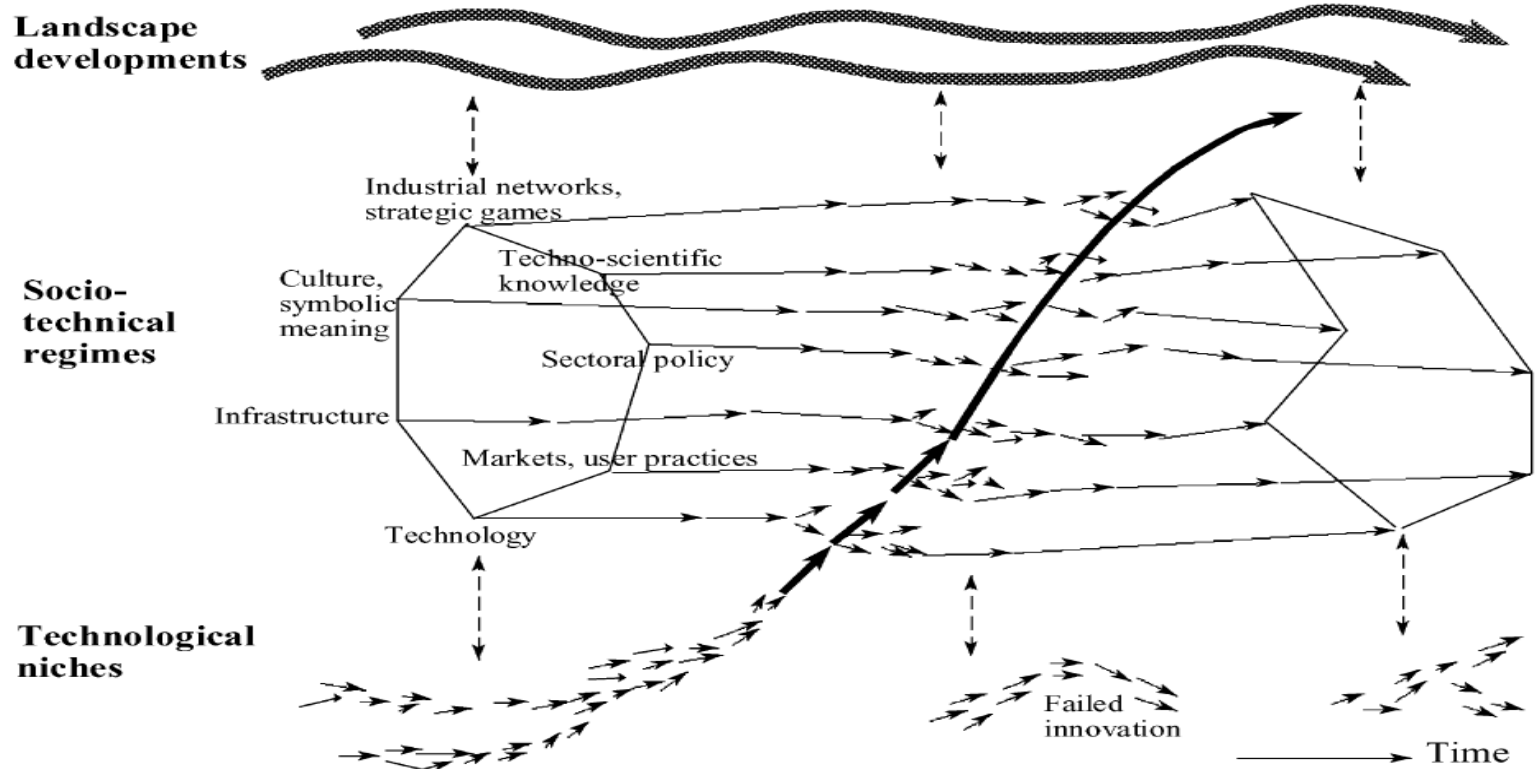
Same products, but innovation in production goals

and farm system: technology, organic, direct-sale

Retro-innovation: niche productions, e.g. aromatics



Transition theory: the multi-level perspective



2nd »» Looking at niche-regime interactions:

Different regimes (agriculture, real-estate, conservation) are relevant,
but regimes do not interact

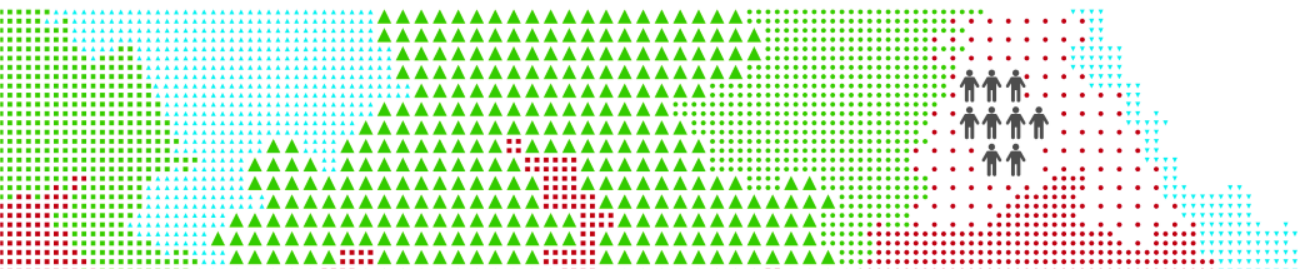
Agriculture regime: pressure from the landscape is deviated
and openings do not mean anchoring

No formal or informal rules about what is desirable

The new dynamic in small farming remains as an un-seen process

3rd »» Looking at the niche itself

A significant production capacity:
in its present extension and with present water availability,
the small scale farms can provide enough basic products
(potatoes, oignons, melons,..) to supply the food needs in
the municipality
even if a lot is used to feed the livestock or remains un-used
new comers are diversifying this production
not a single plot is abandoned



UAM
INSTITUTO DE CIÊNCIAS AGRÁRIAS E AMBIENTAIS MEDITERRÂNICAS



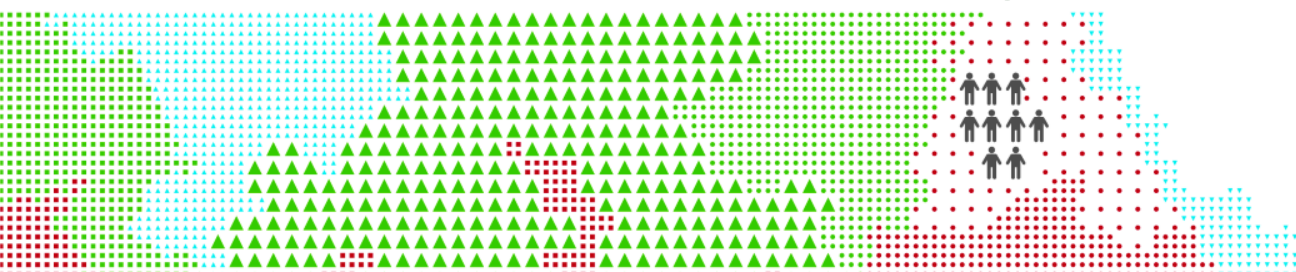
3rd »» Looking at the niche itself

This production is not seen as a farm production nor as a professional activity, rather as a gardening and production of own food

**The new comers follow the dominant local paradigm:
production as an extension of the home activities, a way of living, a dynamic intercation with nature and with neighbors
» a duty in face of human-nature dependencies**

In the local network, products are exchanged by services or other products » enhancing community building

The production contributes to the household economy by reducing the need for food purchase » enhancing resilience and autonomy



UCham
INSTITUTO DE CIÊNCIAS AGRÁRIAS E AMBIENTAIS MEDITERRÂNICAS

Heterodoxy in Mediterranean agriculture

...challenging what has been observed in other contexts,
new contours of the countryside consumption effects:

Maybe there is no niche after all:
the niche does not see itself as a niche in agricultural production

Not less agriculture, but still mainly a non market driven agriculture

Diverse production forms with multiple non formalized interdependencies and a role in food autonomy: the pluri-activity and pluri-income tradition

Interaction of different social spaces in the same geographical space
>>> leading to a new and reshaped community, new network relations, highly grounded in place bindings

Not a vanishing landscape, but a landscape maintained and taken care of as an extension of home, an identity land use



THANKS !



ucam

INSTITUTO DE CIÊNCIAS AGRÁRIAS E AMBIENTAIS MEDITERRÂNICAS