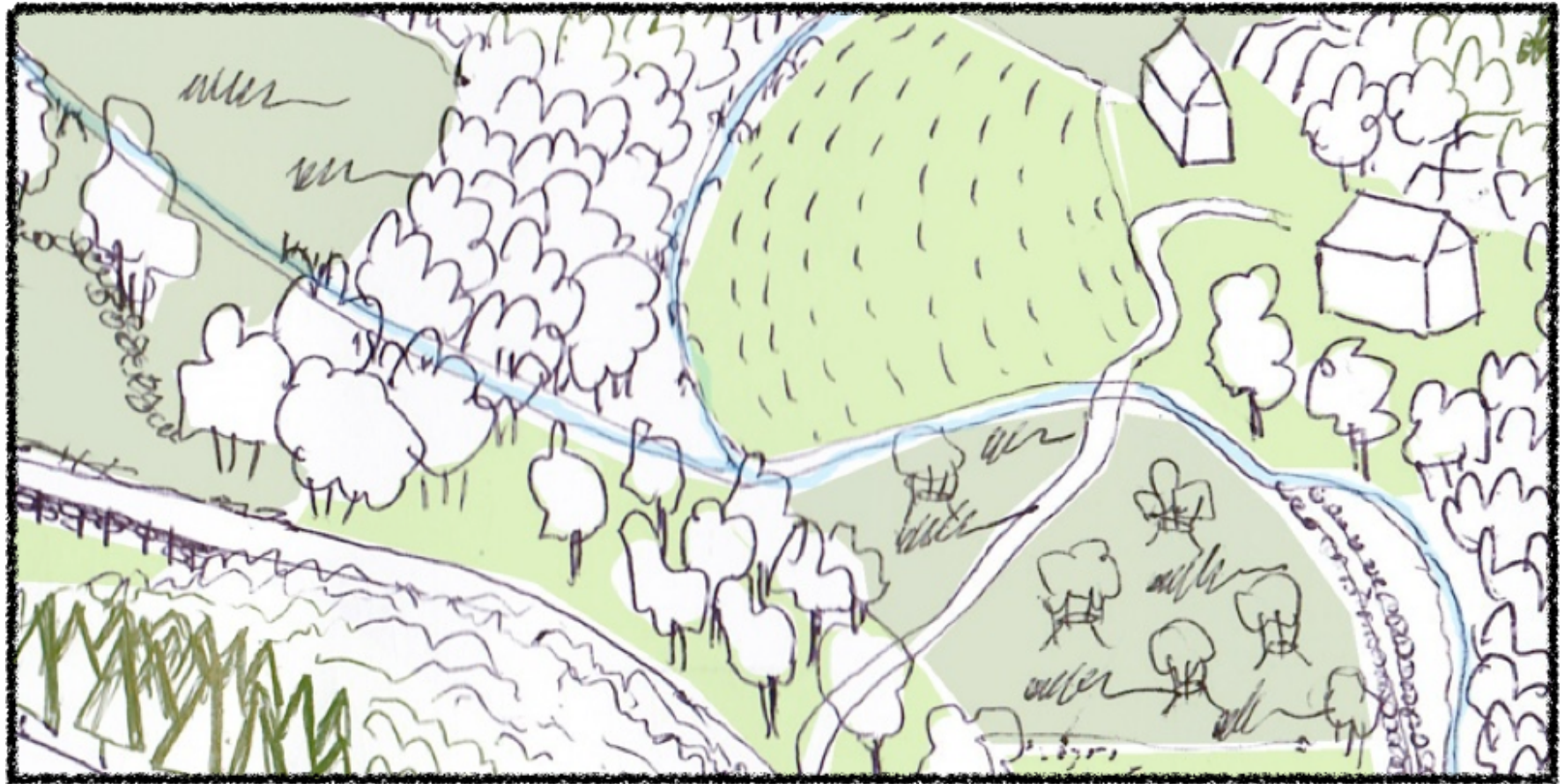




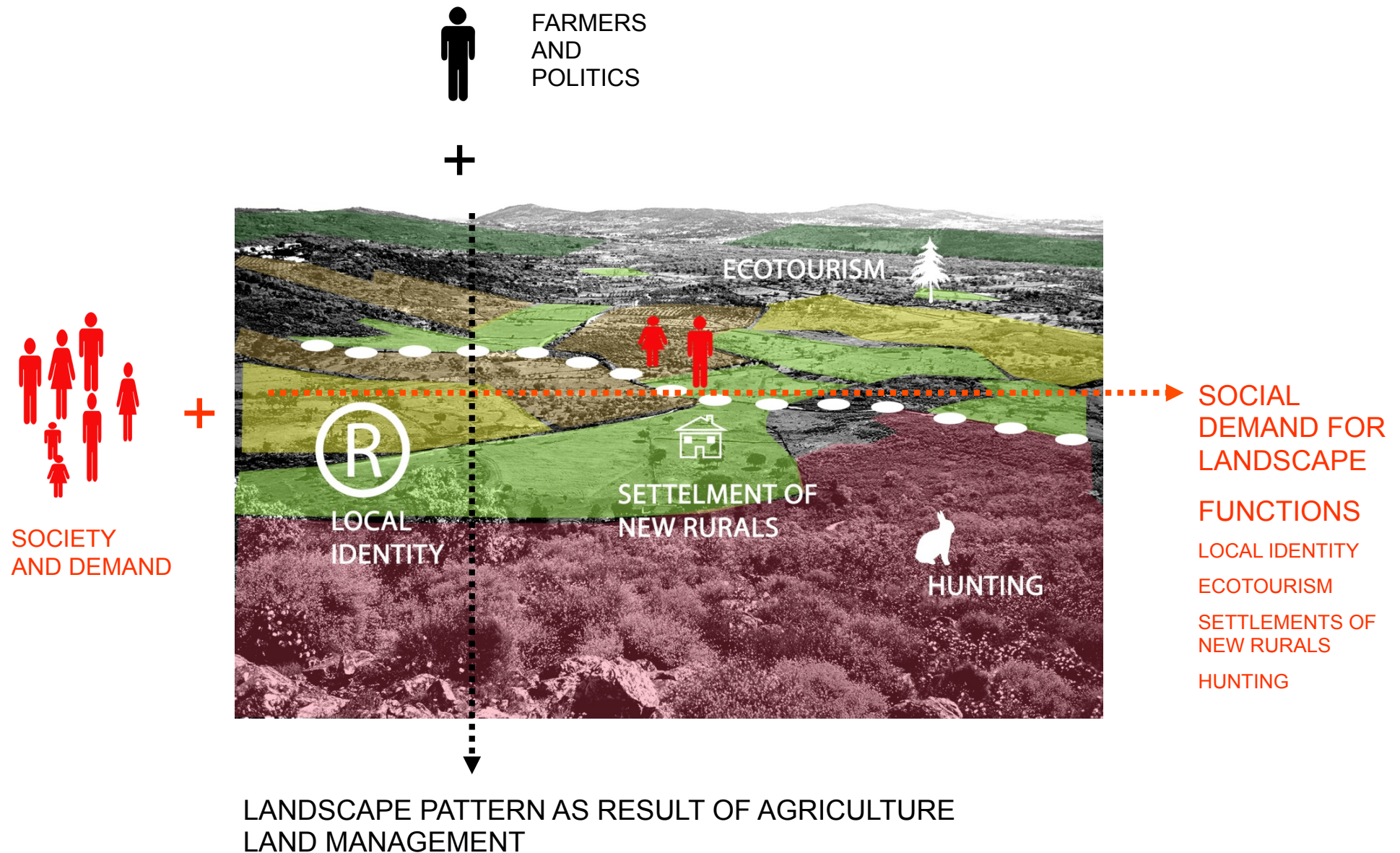
“Farmers” in transition in Mediterranean areas – A multifunctional transition typology

Filipe Barroso, Teresa Pinto-Correia, Isabel Rodrigo, Helena Menezes, Daniela Costa



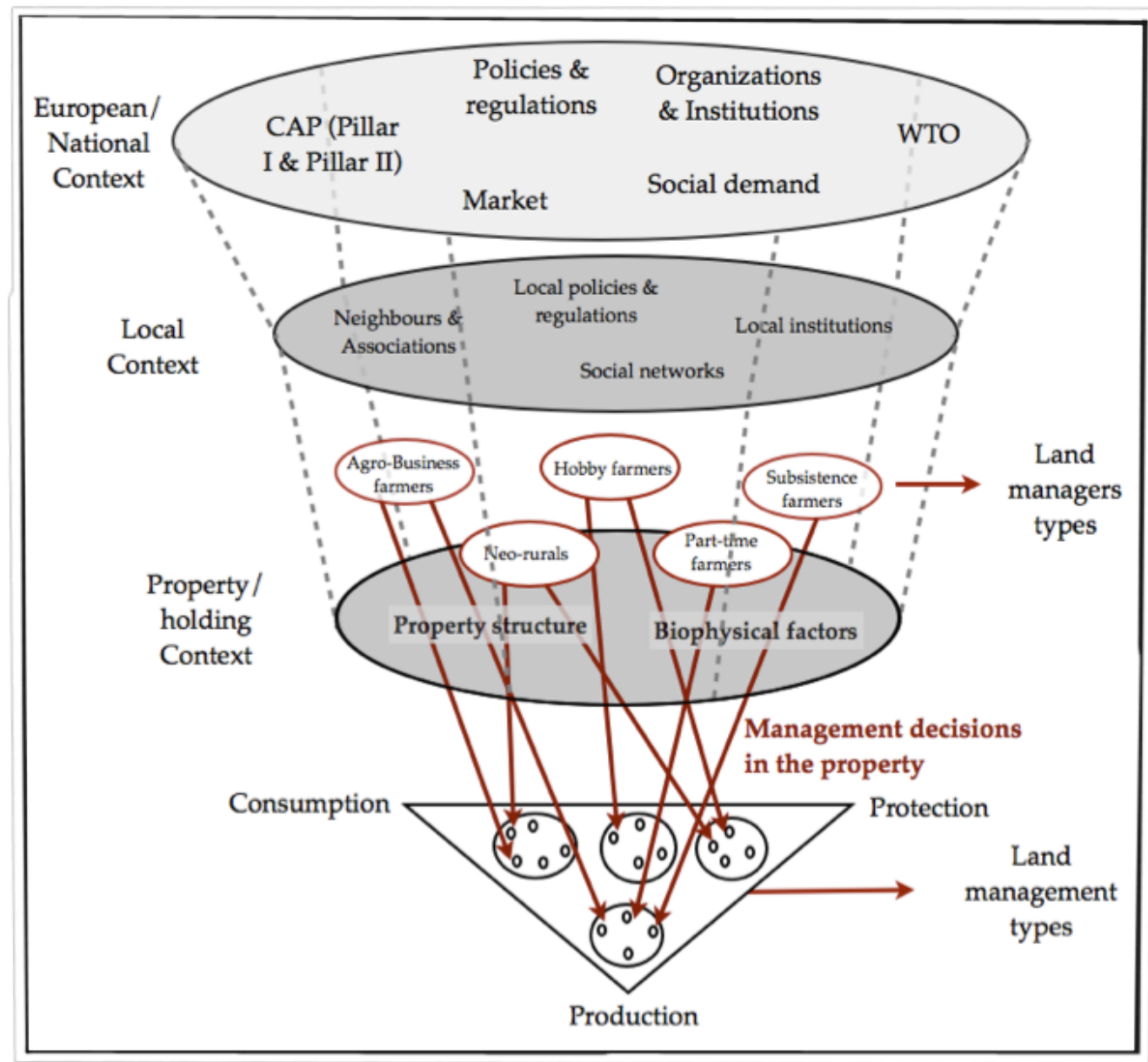
Framework

European rural landscapes: **functions besides farming** progressively **recognized (demanded!) by society**



New ways of land management arise, made not just by those normally considered farmers, but by a multitude of other land managers

Many of these strategies can coexist, reflecting differences in the balance between production, consumption and conservation.



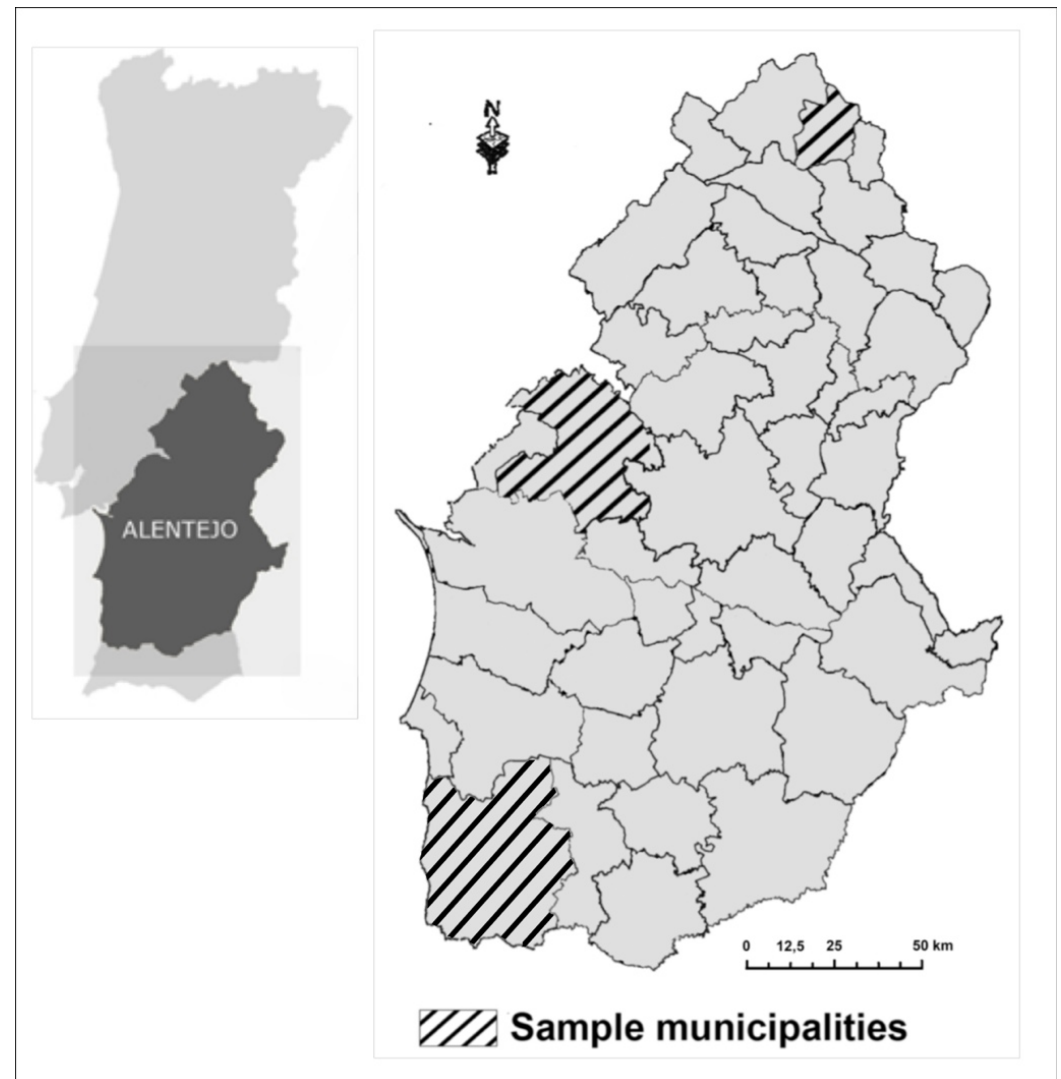
Objectives

- Identify a typology of land managers with focus on the transition pathways
- Test a group of indicators to classify the different land managers and management types on a multifunctional spectrum, from productivist to post-productivist oriented.
- Understand land managers strategies, regarding their management/action (behavior) but also their motivations/though (attitude)

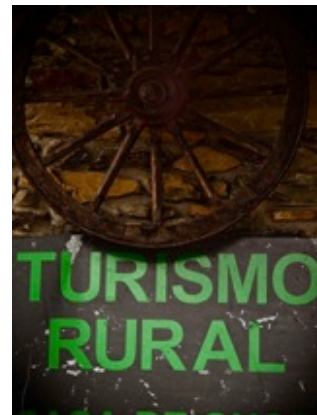


Sample Municipalities

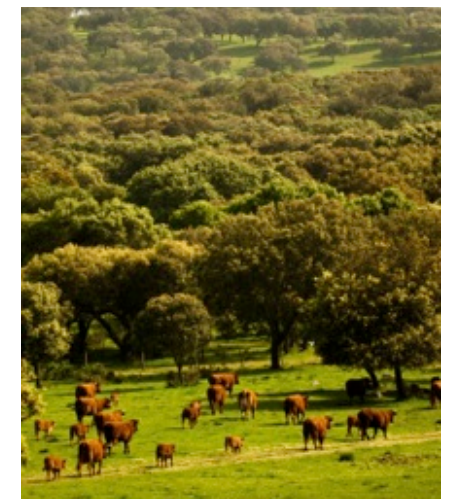
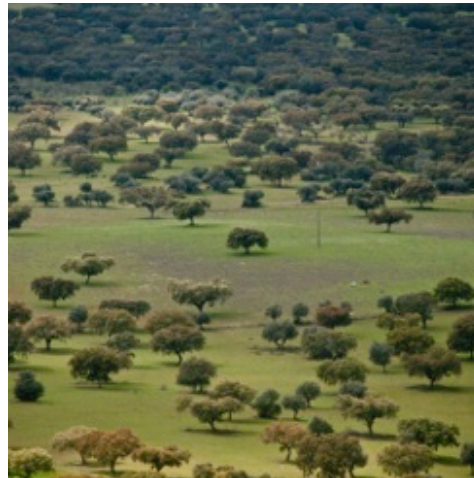
- Mediterranean dry climate, mainly poor soils, peneplain.
- Extensive land use: agro- silvo pastoral systems and permanent grazing + traditional olive + some areas of cereal
- Recently: some areas of intensive use, as vineyards, irrigated cultures + intensive olive groves + afforestation.
- Very low population density. Ageing. Lack of job opportunities
- Characteristic landscape, high conservation values, well preserved heritage and villages >> highly attractive rural landscape
- Large scale holdings: latifundia. Surrounding towns: minifundia.



Alentejo: small scale holdings surrounding towns



Alentejo: mostly large scale holdings

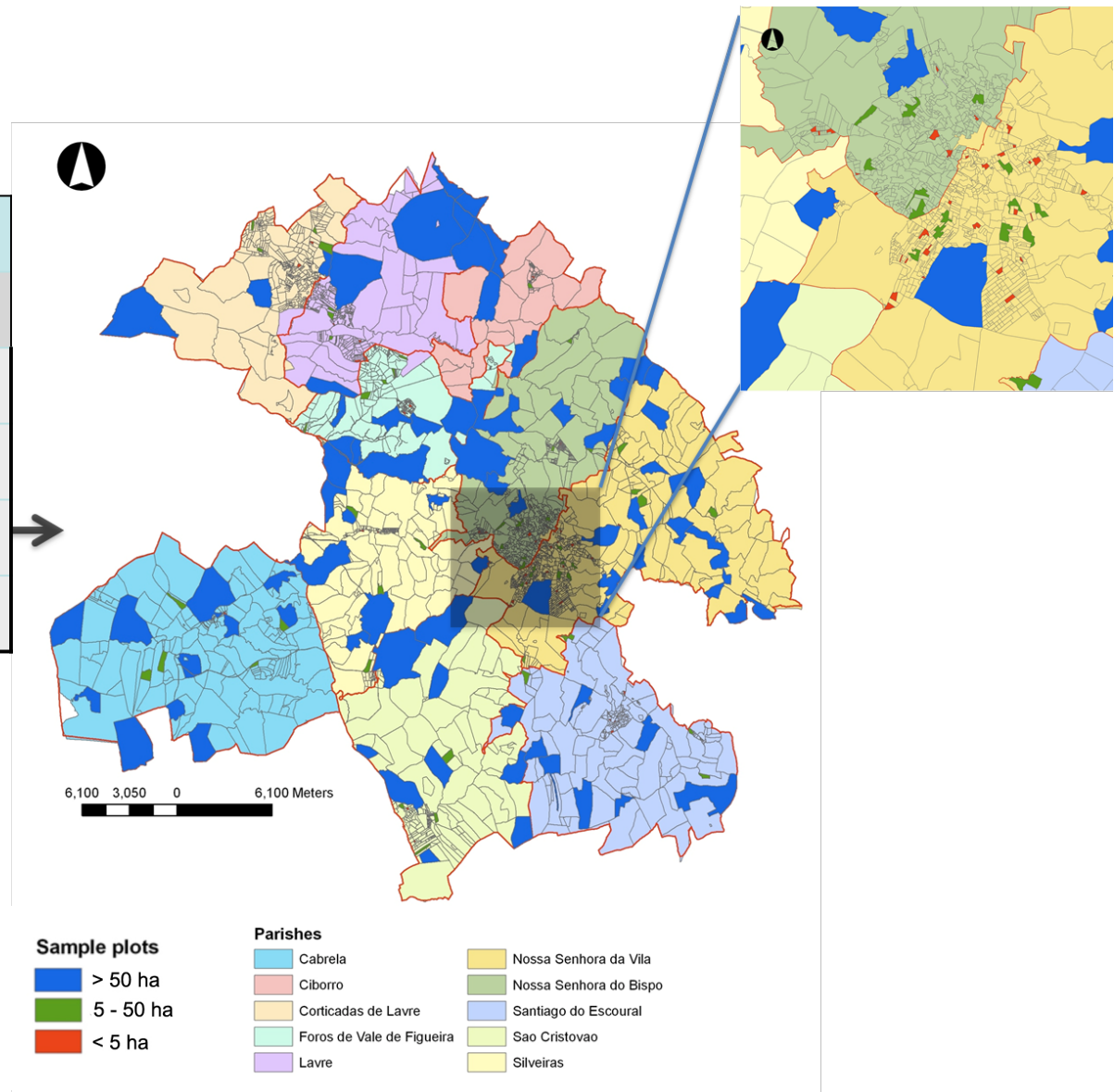




Sample Methodology

Sampling

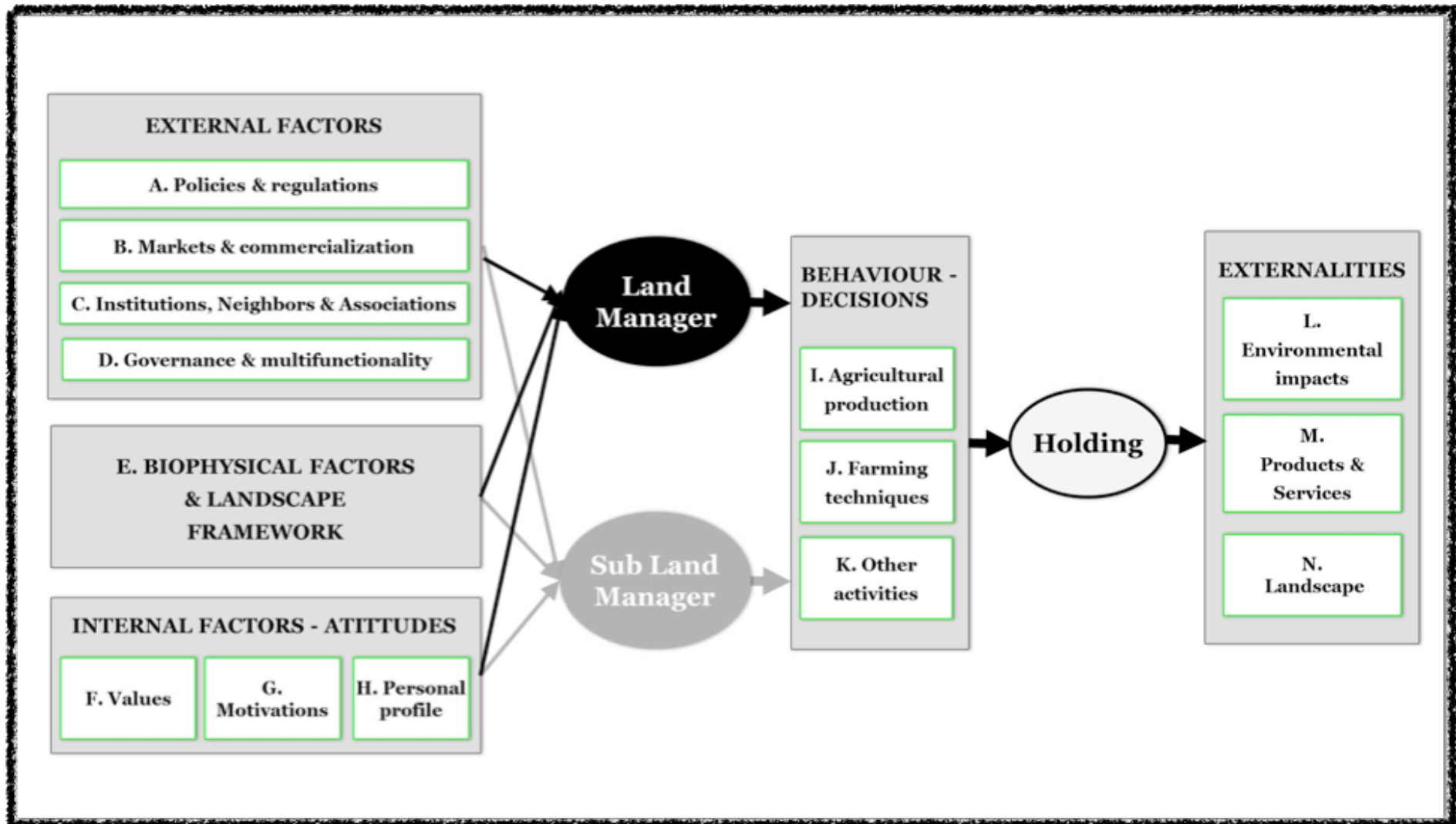
Nº of holdings sampled per municipality				
Municipalities	Total	0-5 ha	5-50 ha	> 50 ha
Castelo de Vide	45	17	13	15
Odemira	209	51	84	74
Montemor-o-Novo	119	40	28	51
Total	373	108	125	140





Inquiries Methodology

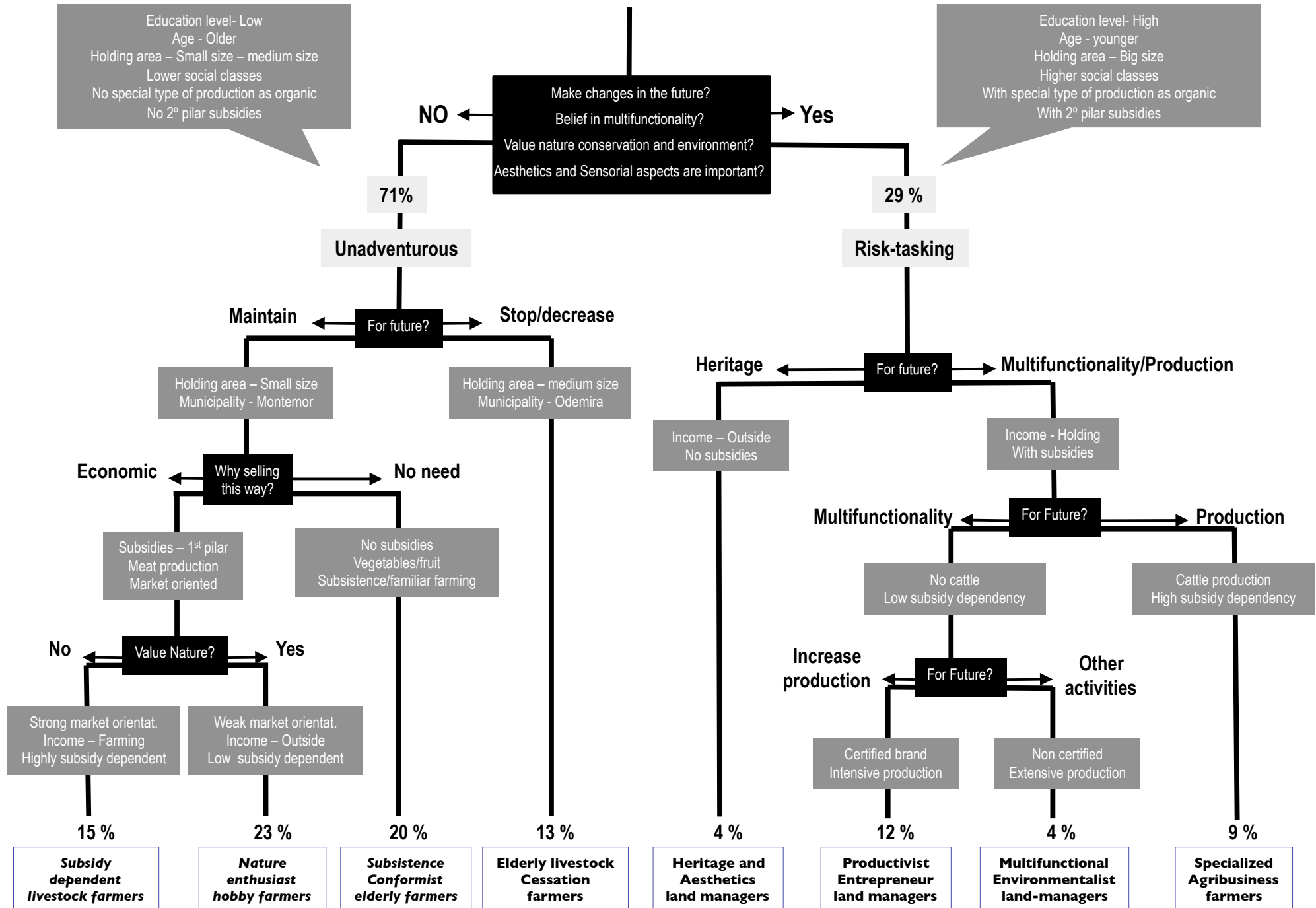
Questionnaire - Dimensions to consider in the inquiry



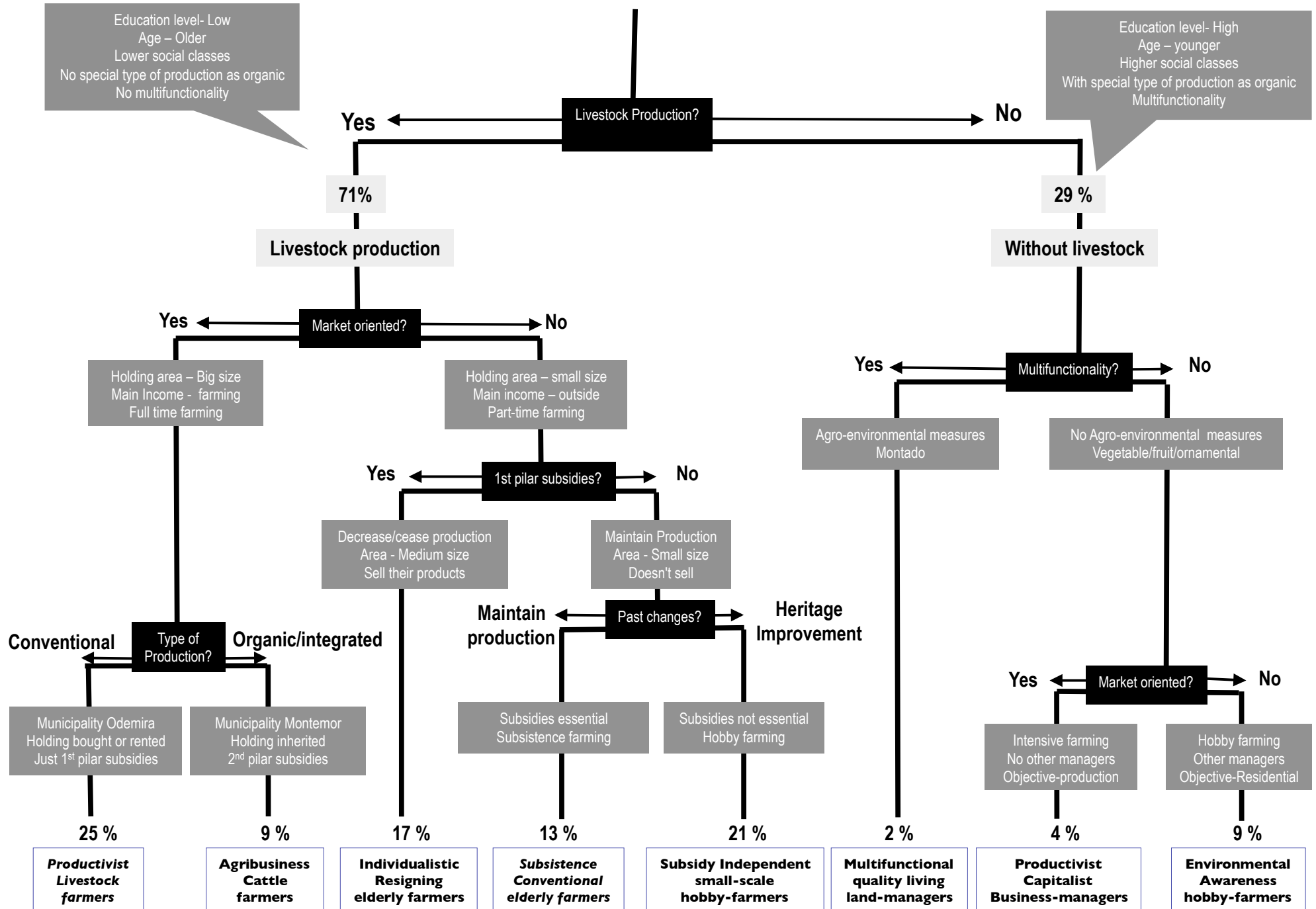


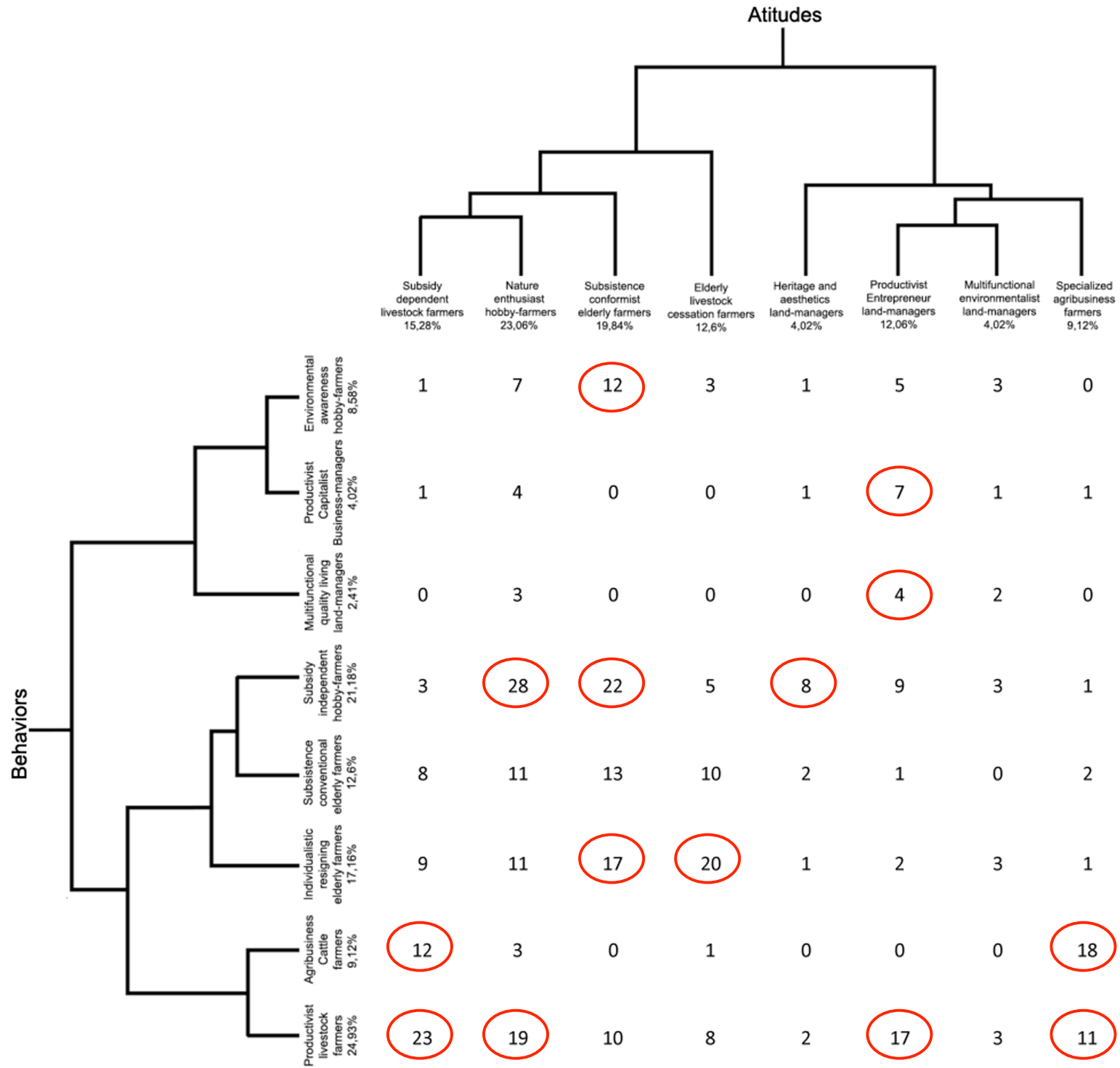
Results

373 questionnaires – 100% ➔ Typology: Attitudes

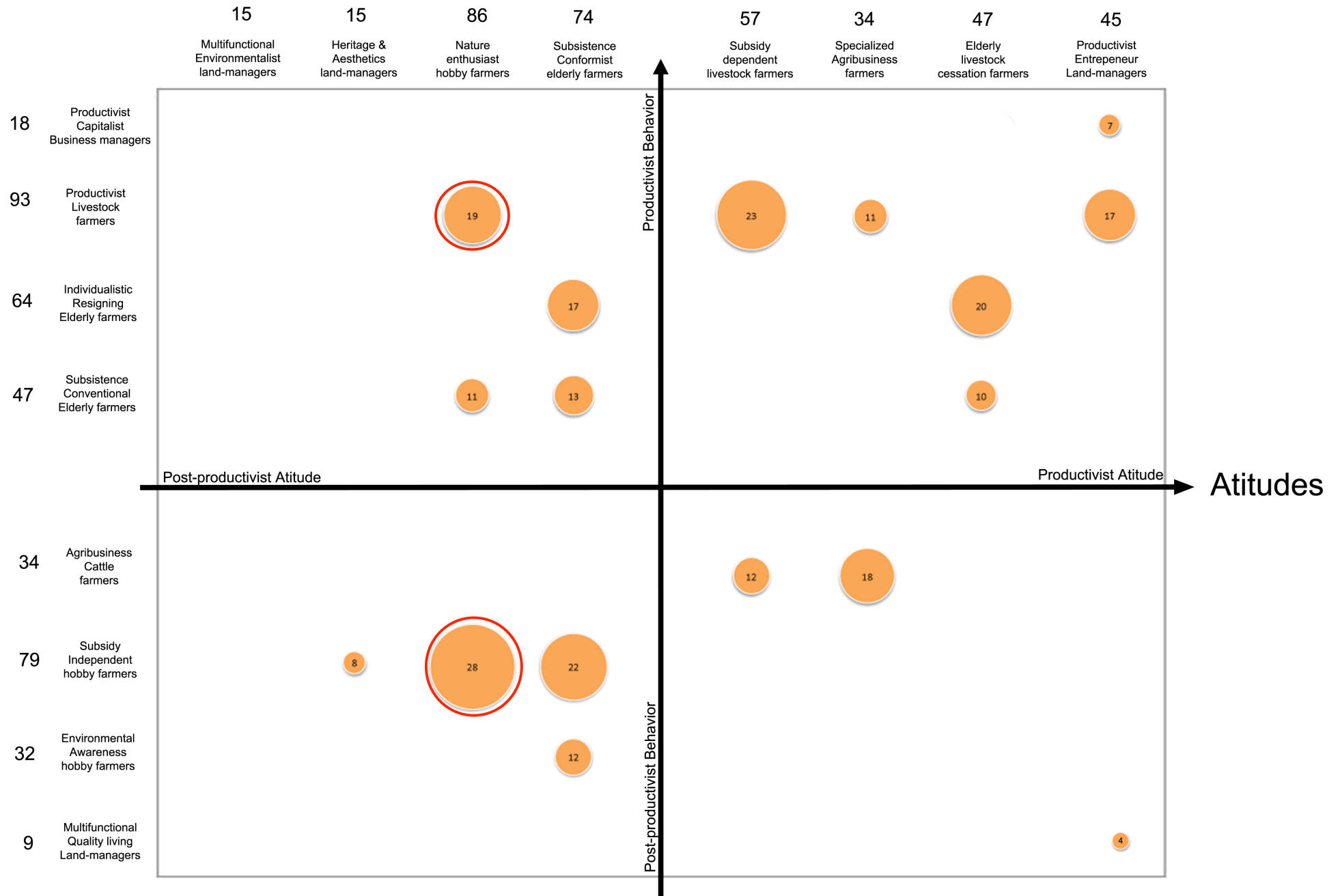


373 questionnaires – 100% ➔ Typology: Behaviours

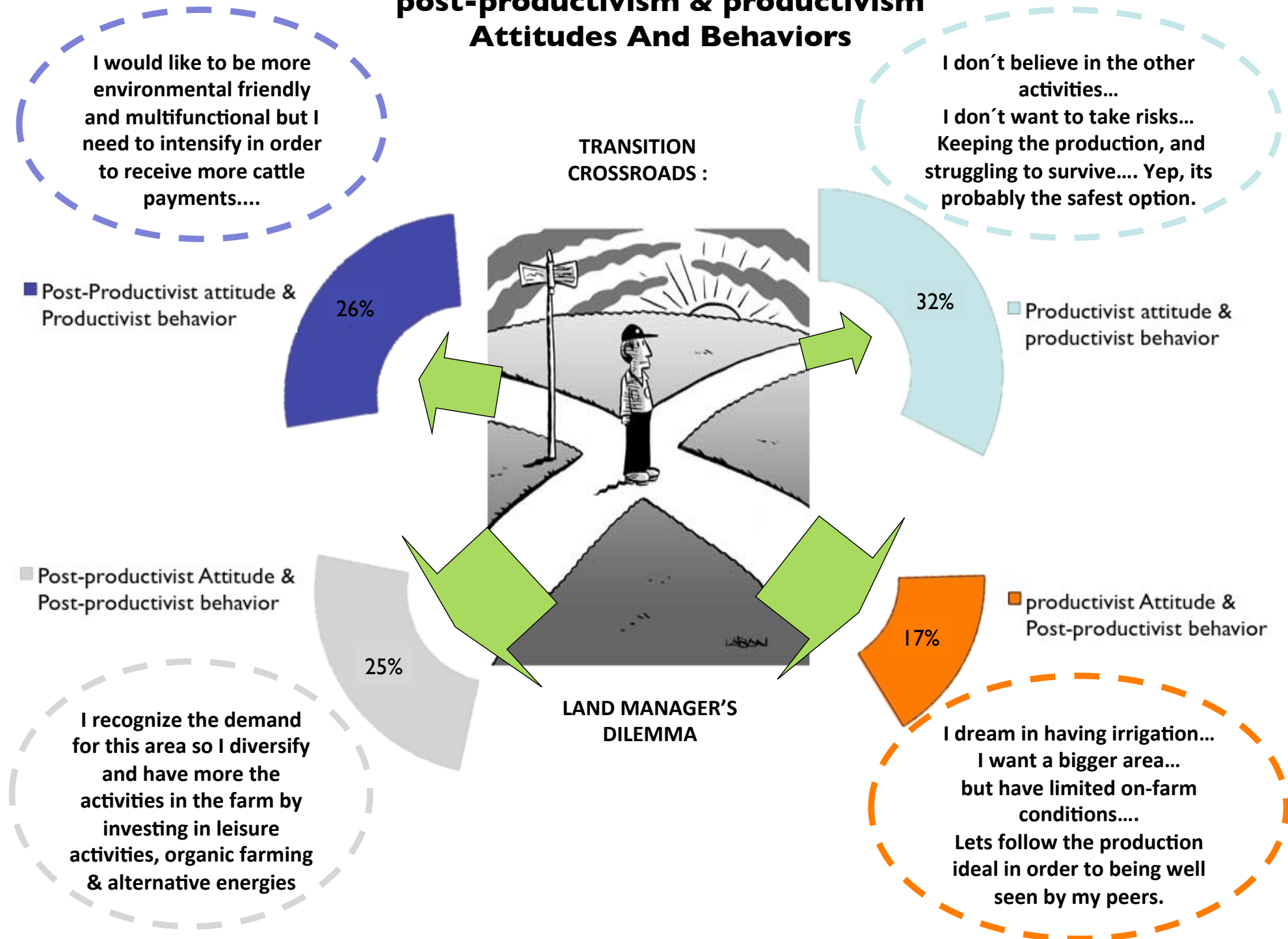




Behaviors



post-productivism & productivism Attitudes And Behaviors





conclusions

Conclusion

- **Many complex profiles** emerge, which differ from each other and from the most common farmer definition >> new and multiple types of actors in land management
- There is a **conflict between the behaviours and the attitudes** in a large number of land managers >> tensions in land management options and uncertainty for the future strategies
- **Innovation** in land management **not supported** by public policies >> The **differentiation is not considered**
- Is not given enough attention to a big number **of small scale land managers** as the subsistence or hobby farmers farmers, but they **play a very important role** in rural areas.
- There is a **need** to work more comprehensively with land managers for a **broader understanding of their options**,



Thank you
Grazie
Obrigado